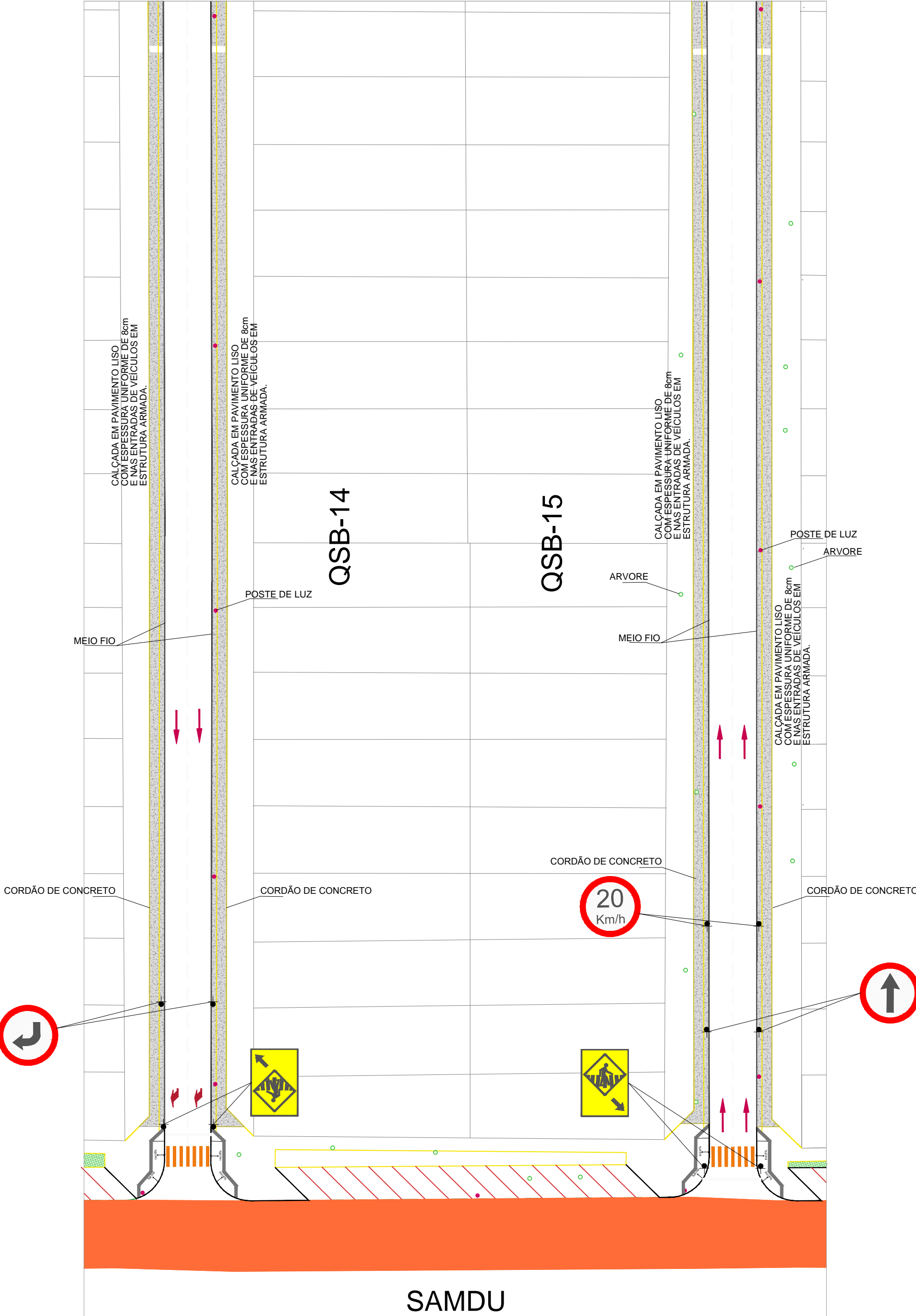
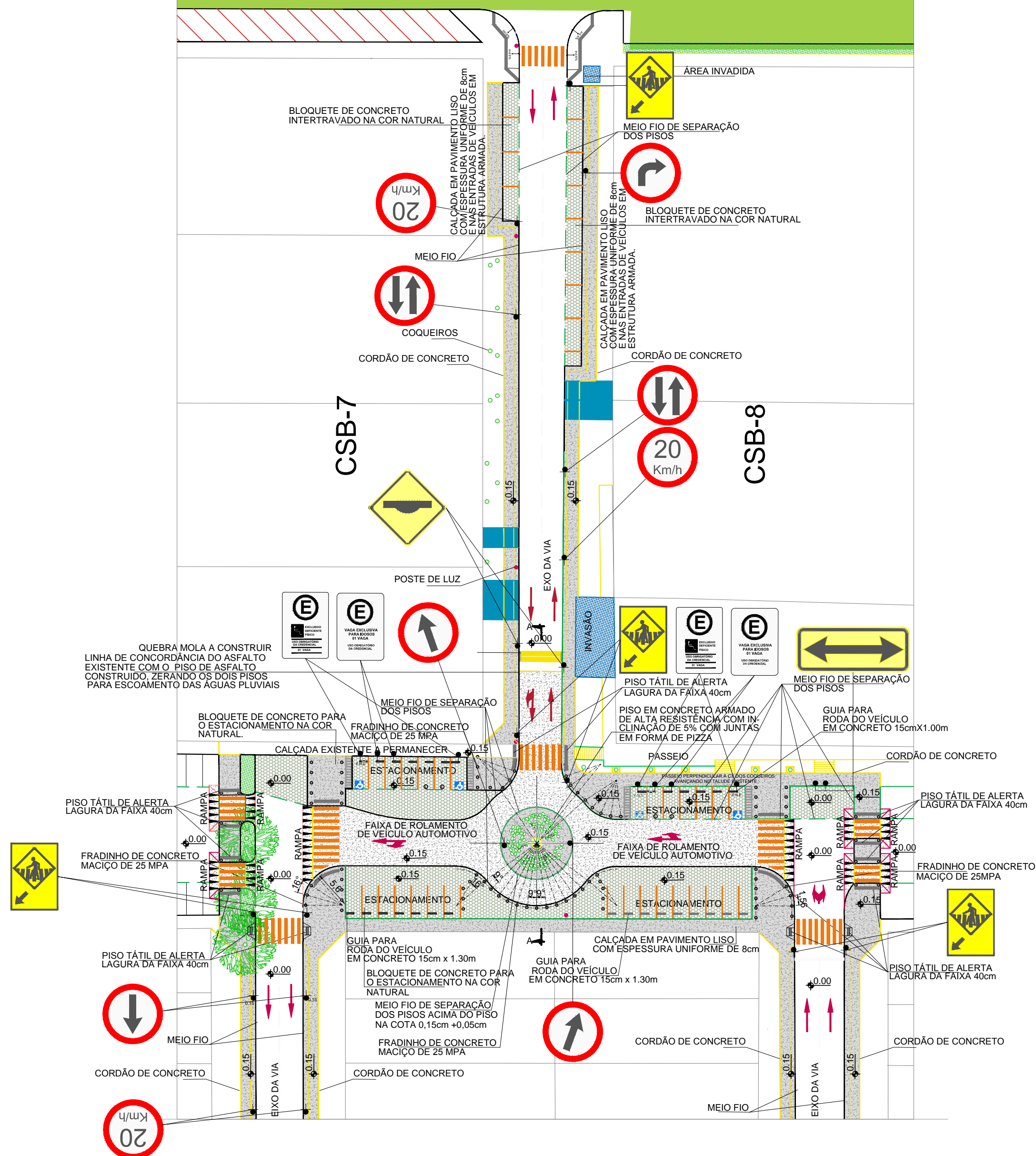
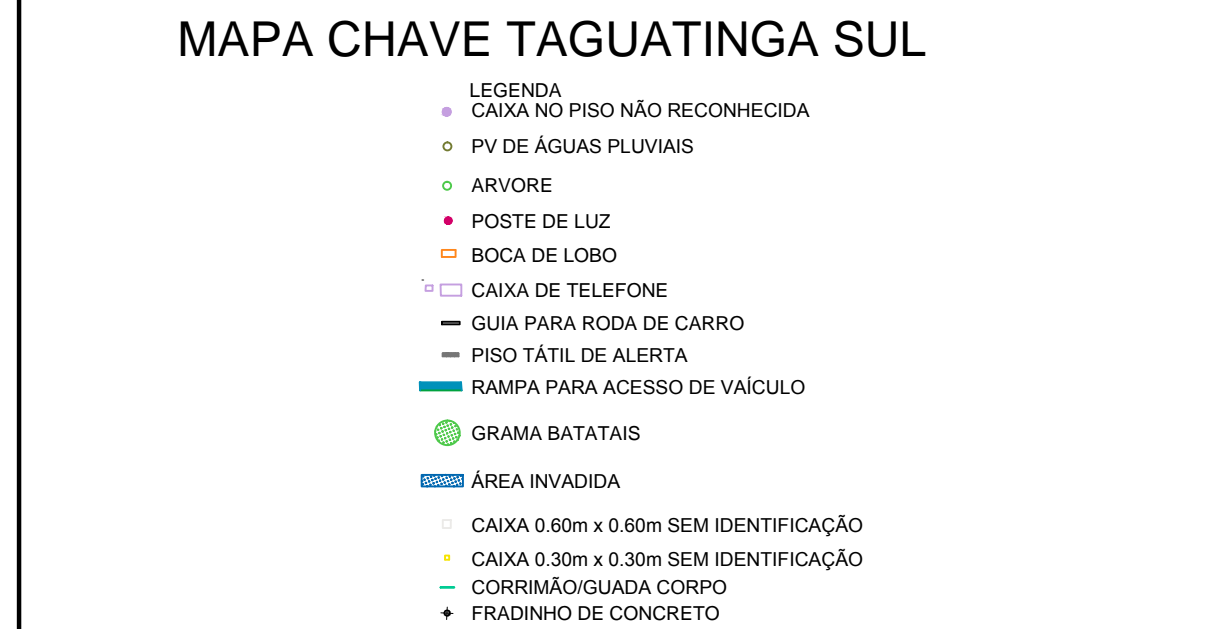
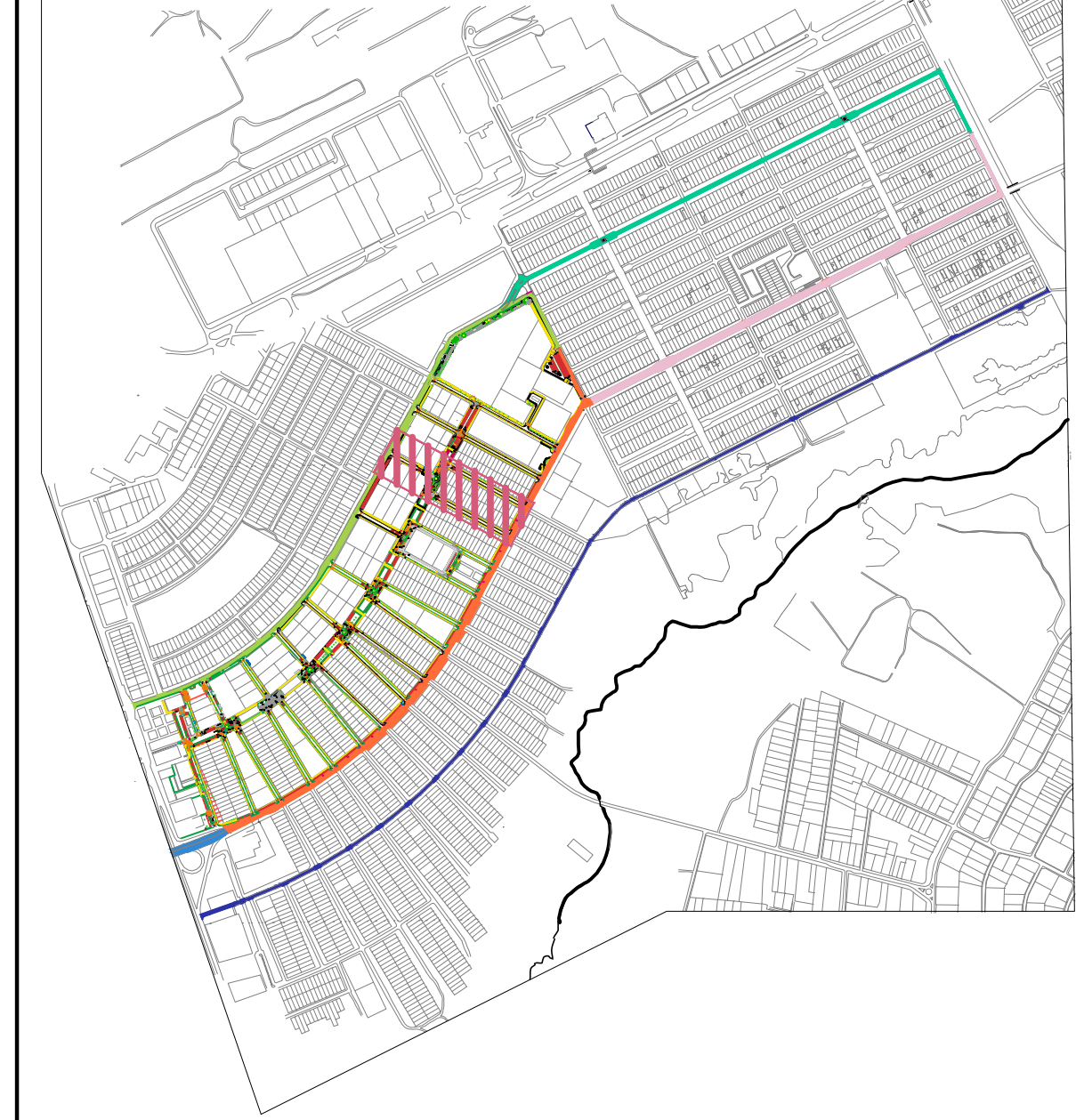
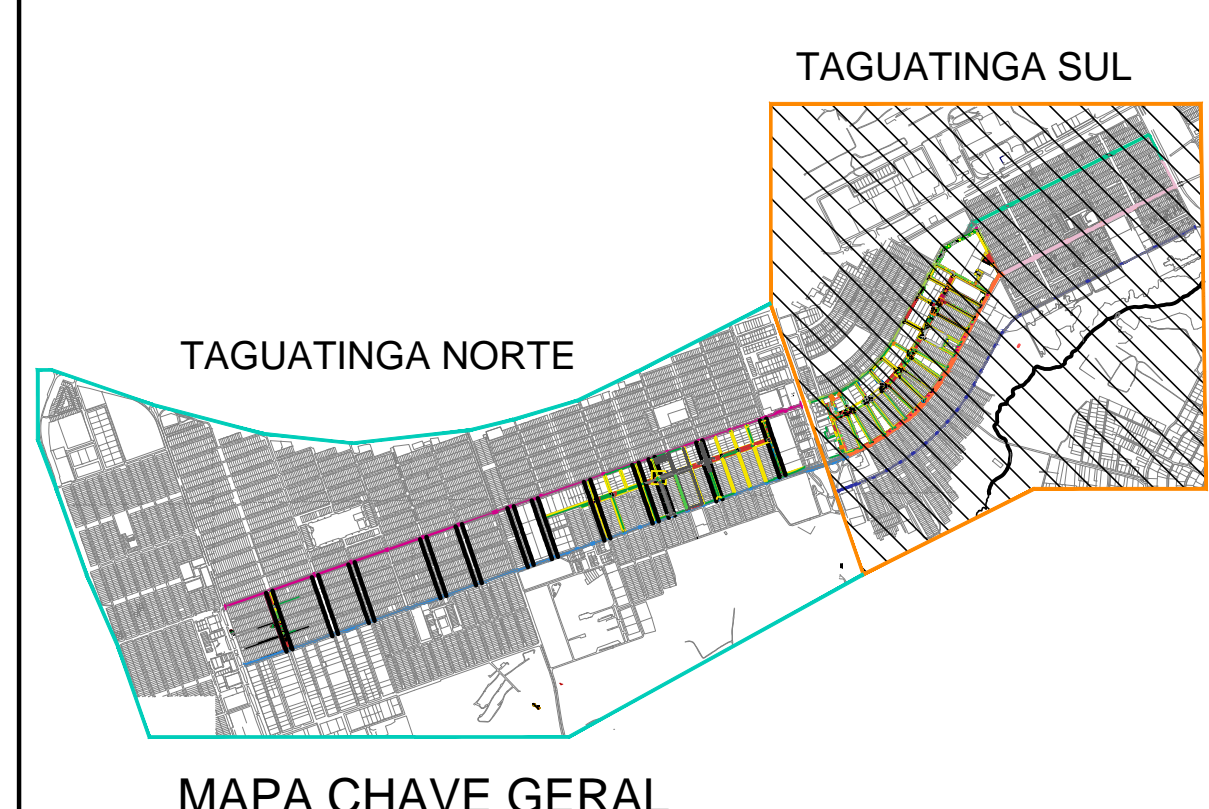
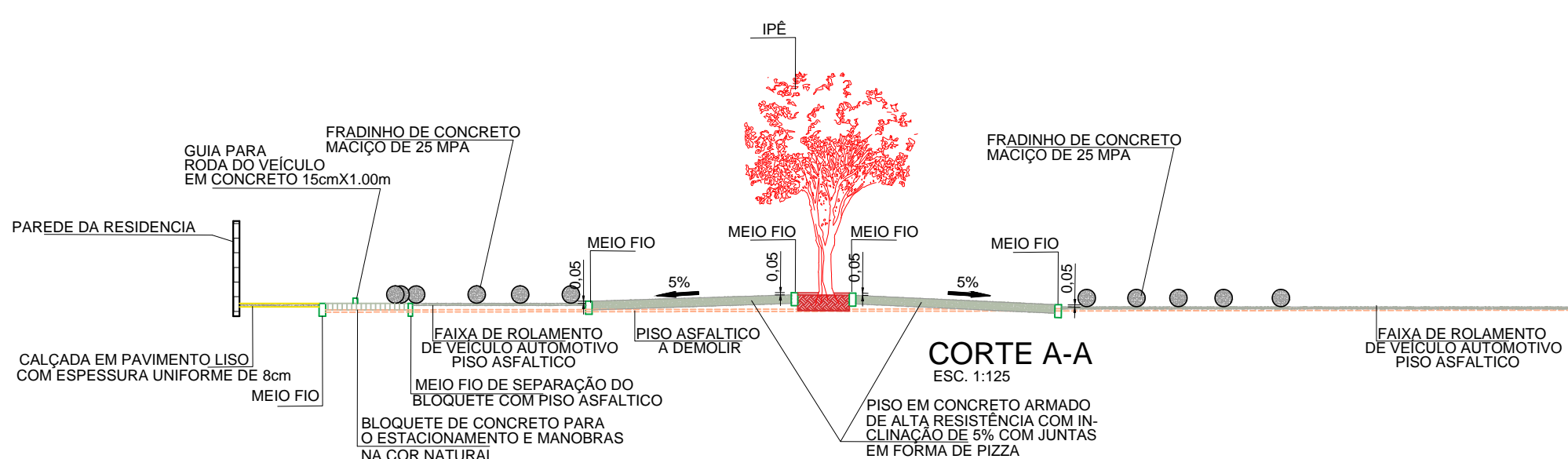


COMERCIAL



SAMDU



SECRETARIA DE ESTADO DE INFRAESTRUTURA E SERVIÇOS PÚBLICOS

AUTOR DO PROJETO: JOÃO LUIZ VALIN BATELLI

Nº DO CAU: A8489-7

Nº DO RRT: 000005024384

PROJETO BÁSICO

URB-09/18

BINÁRIO COMERCIAL E SAMDU DE TAGUATINGA - DF

PROJETO DE URBANISMO CSB 7/8 E QSB 14/15

CAIÇADAS DAS RUAS TRANSVERSAIS C/ACESSIBILIDADE

PLANTA PARCIAL	FOLHA: URB-09/18	ESCALA: 1:500	DATA: NOVEMBRO/2016
PROJETO: LUIZ BATELLI	CÁLCULO:	REVISÃO:	VISTO:
APROVO:			

ARTICULAÇÃO DAS FOLHAS

NM	NG	NQ
✓	✓	✓
✓	✓	✓
✓	✓	✓

MERIDIANO CENTRAL: 45°Wgr

DATUM VERTICAL: IBITUBA-SC

DATUM HORIZONTAL: SIRGAS/2000

DECL. MAG. OUT/2013

VARIAÇÃO ANUAL: -0°5,6'

PLANO PILOTO - RA I

Kr = 1.0006776