

RELAÇÃO DO AÇO

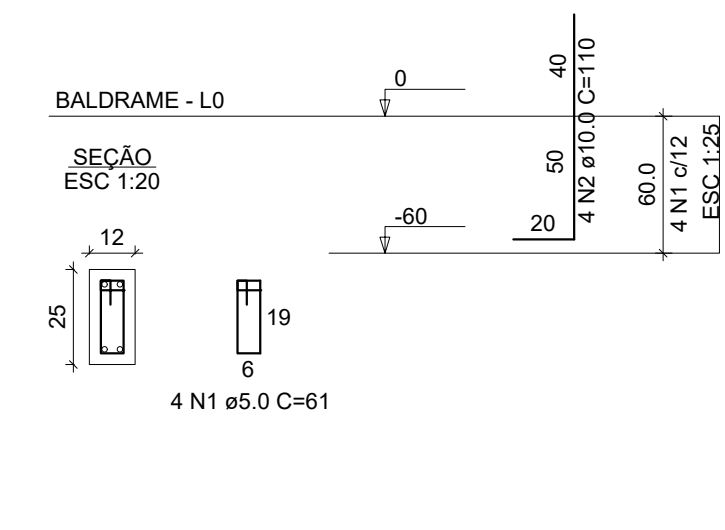
ACO	N	DIAM (mm)	QUANT	C.UNIT (mm)	C.TOTAL (mm)
B0001	1	5,0	48	214	10272
CASO	2	8,0	120	224	26880

RESUMO DO AÇO

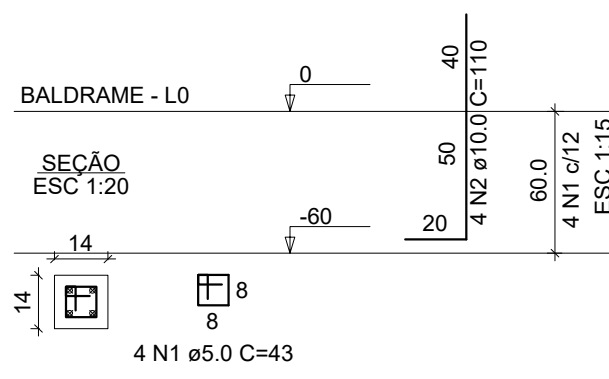
ACO	DIAM (mm)	C.TOTAL (mm)	PESO (kg)
CASO	8,0	26880	106,2
PESO TOTAL			106,2
CASO			15,6

Volume de concreto (C-30) = 3,38 m³  
Área de forma = 17,28 m²

P1=P2=P3=P4=P5=P6=P7=P8



P9=P10=P11=P12



RELAÇÃO DO AÇO

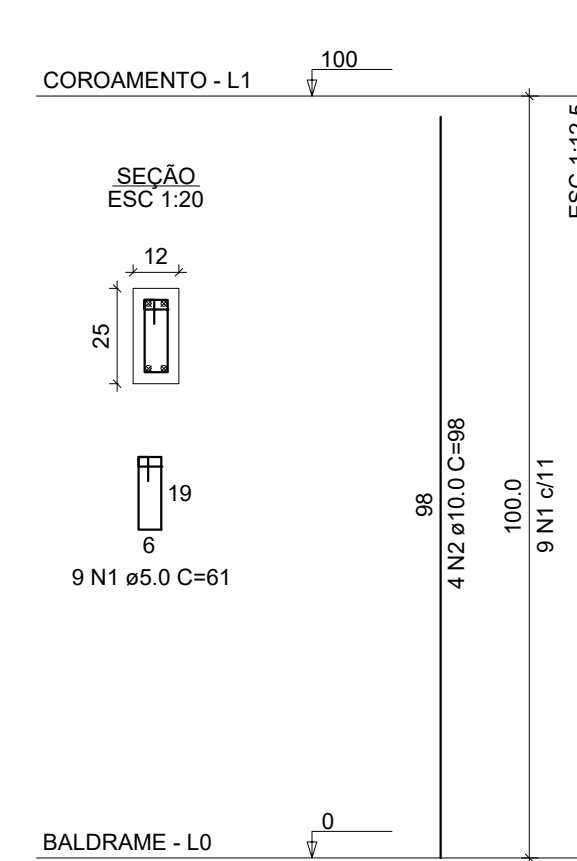
ELEMENTO	ACO	N	DIAM (mm)	QUANT	C.UNIT (mm)	C.TOTAL (mm)
B0011	CASO	2	10,0	32	110	3520
B0012	CASO	2	10,0	16	45	720

RESUMO DO AÇO

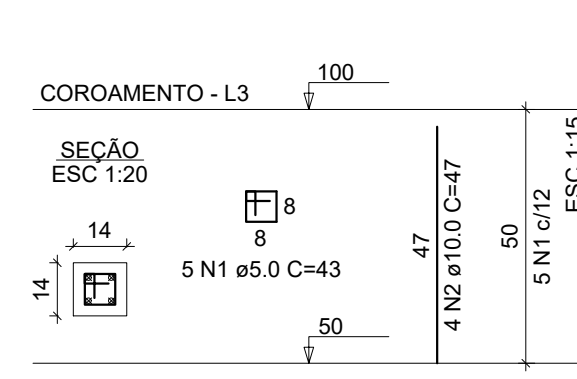
ACO	DIAM (mm)	C.TOTAL (mm)	PESO (kg)
CASO	10,0	3520	32,4
CASO	10,0	720	6,6
PESO TOTAL			39,0

Volume de concreto (C-30) = 1,28 m³  
Área de forma = 7,04 m²

P1=P2=P3=P4=P5=P6=P7=P8



P9=P10=P11=P12



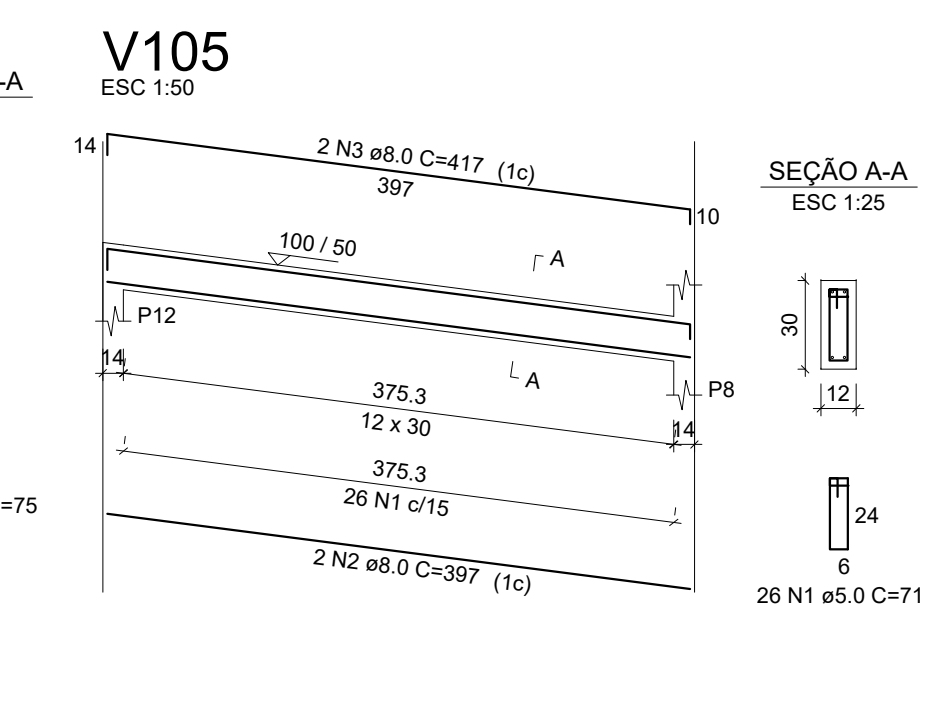
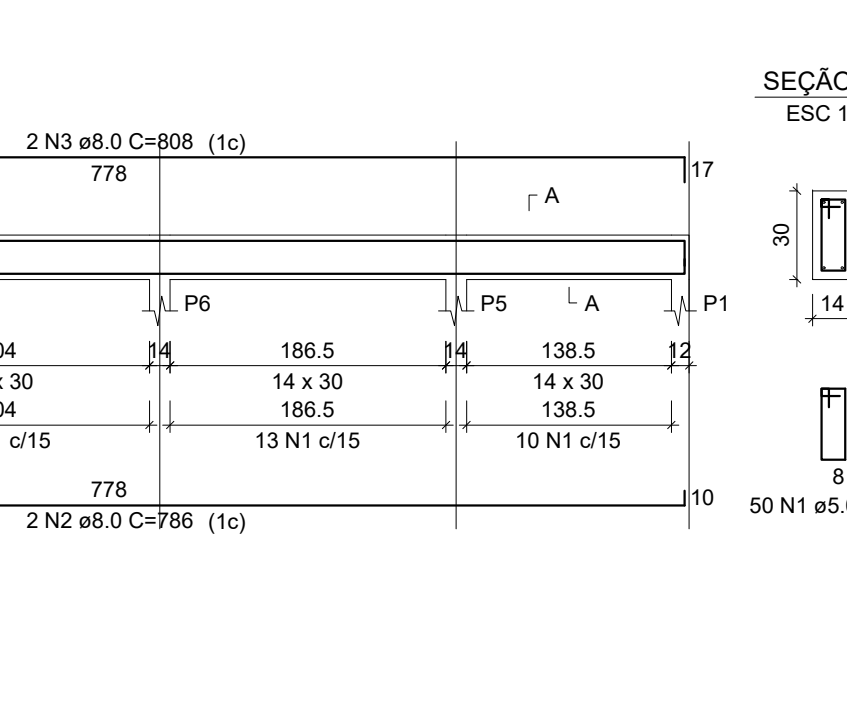
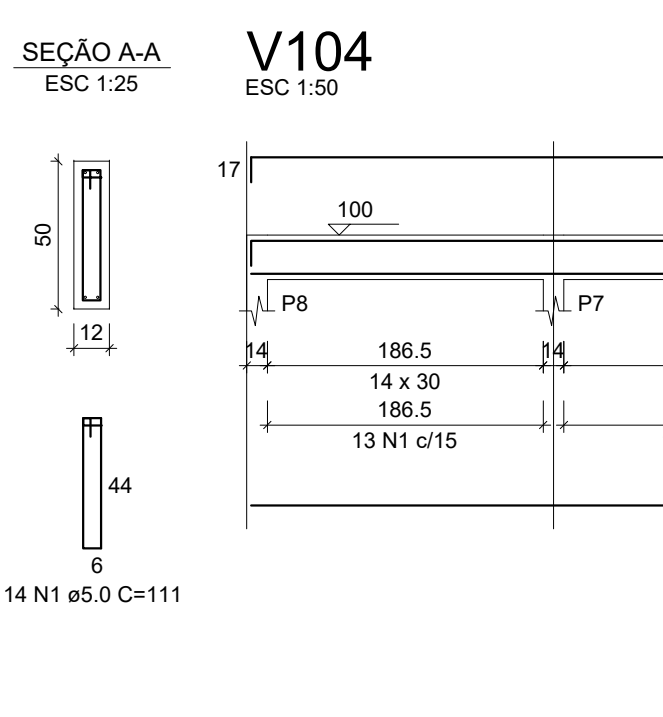
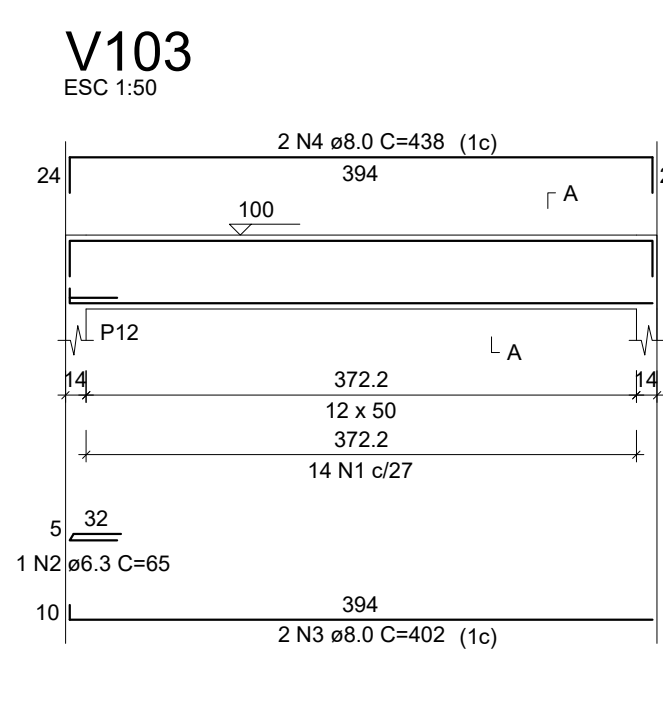
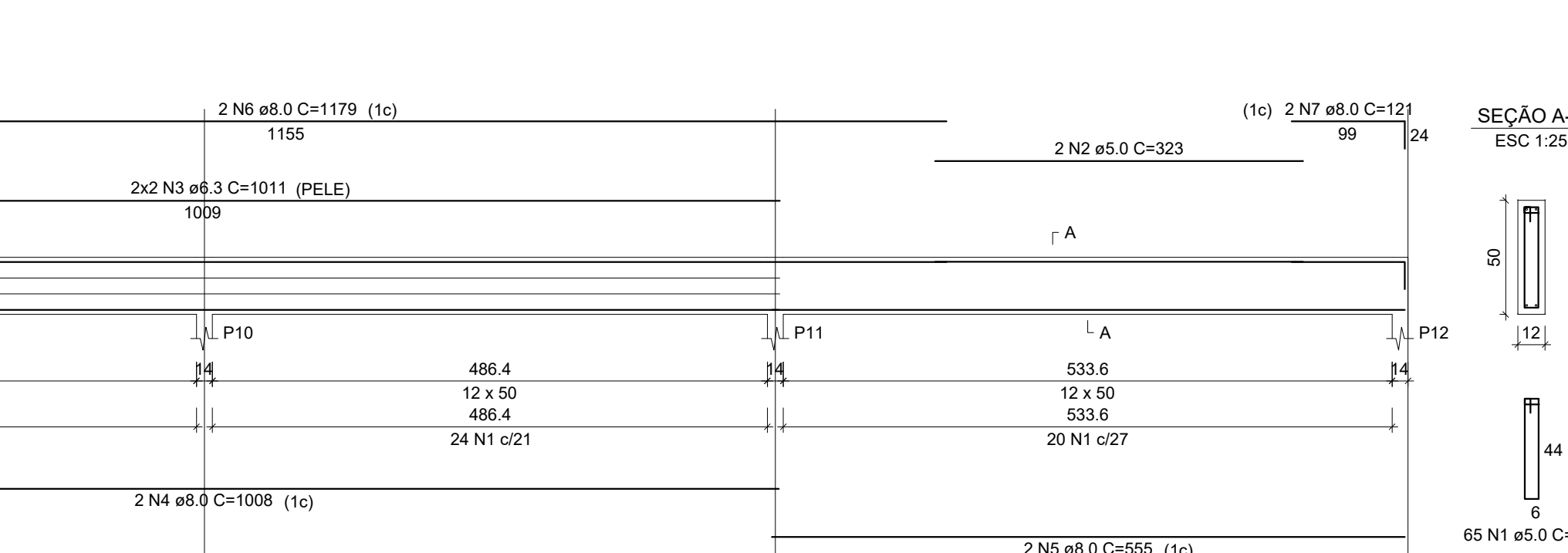
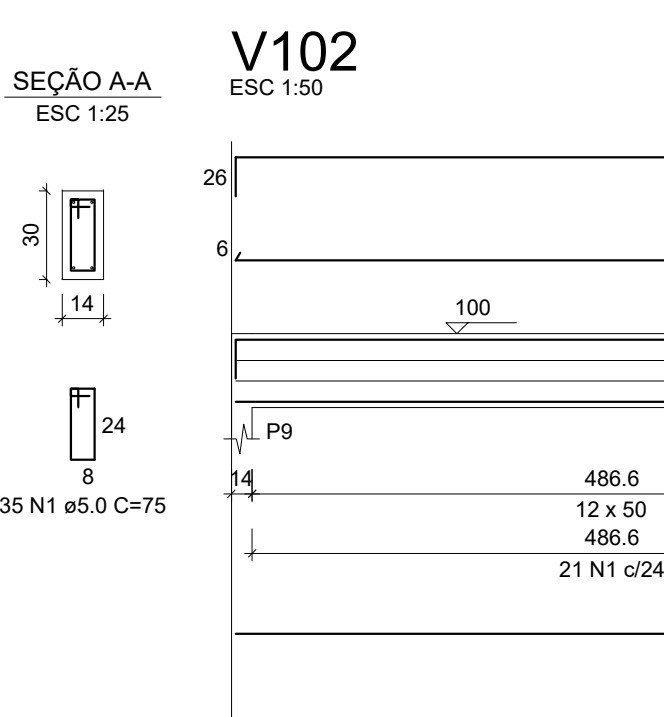
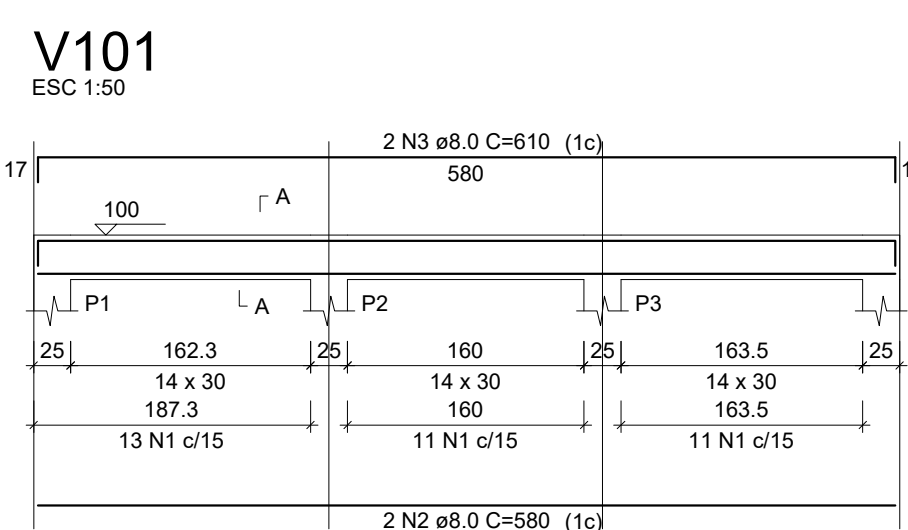
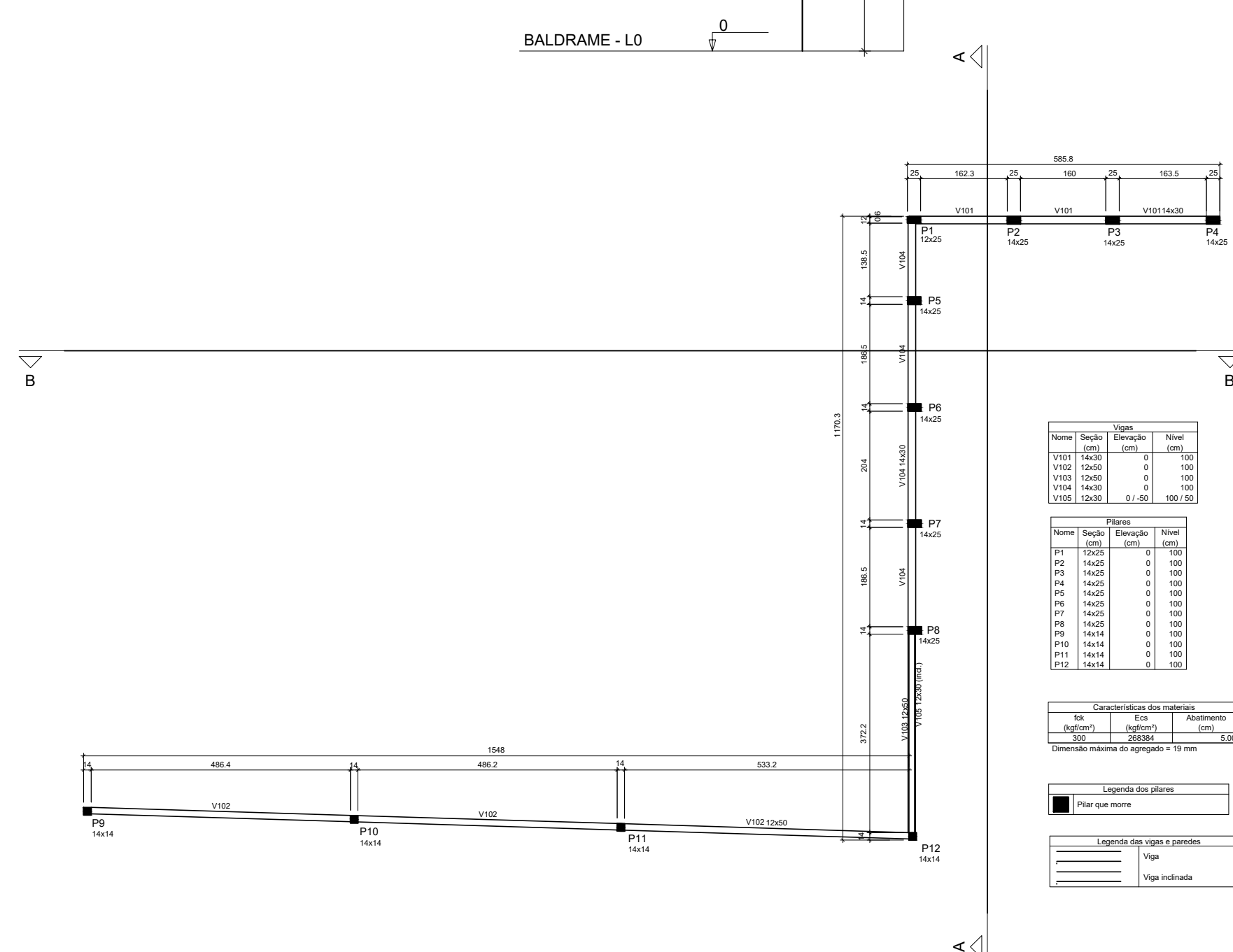
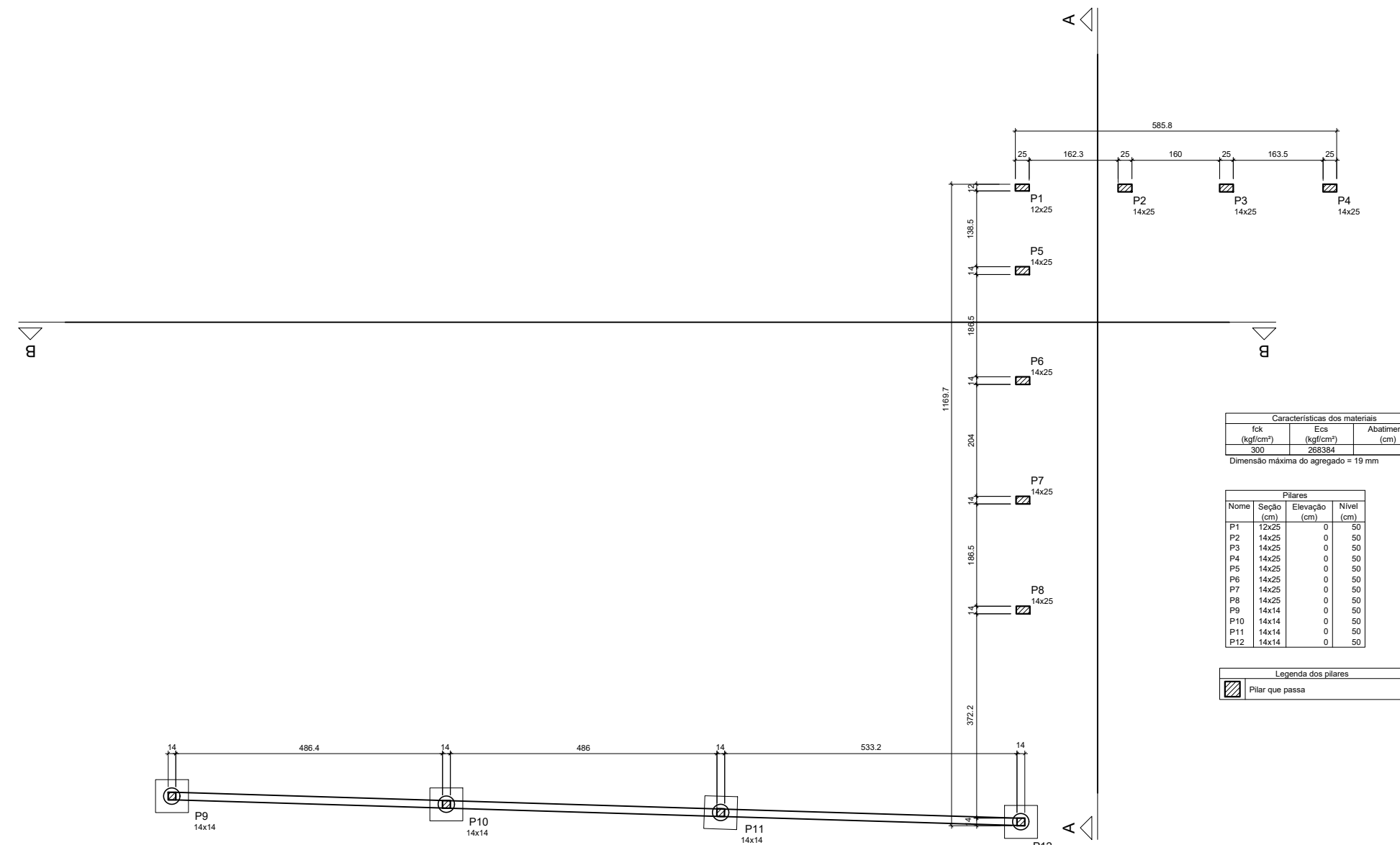
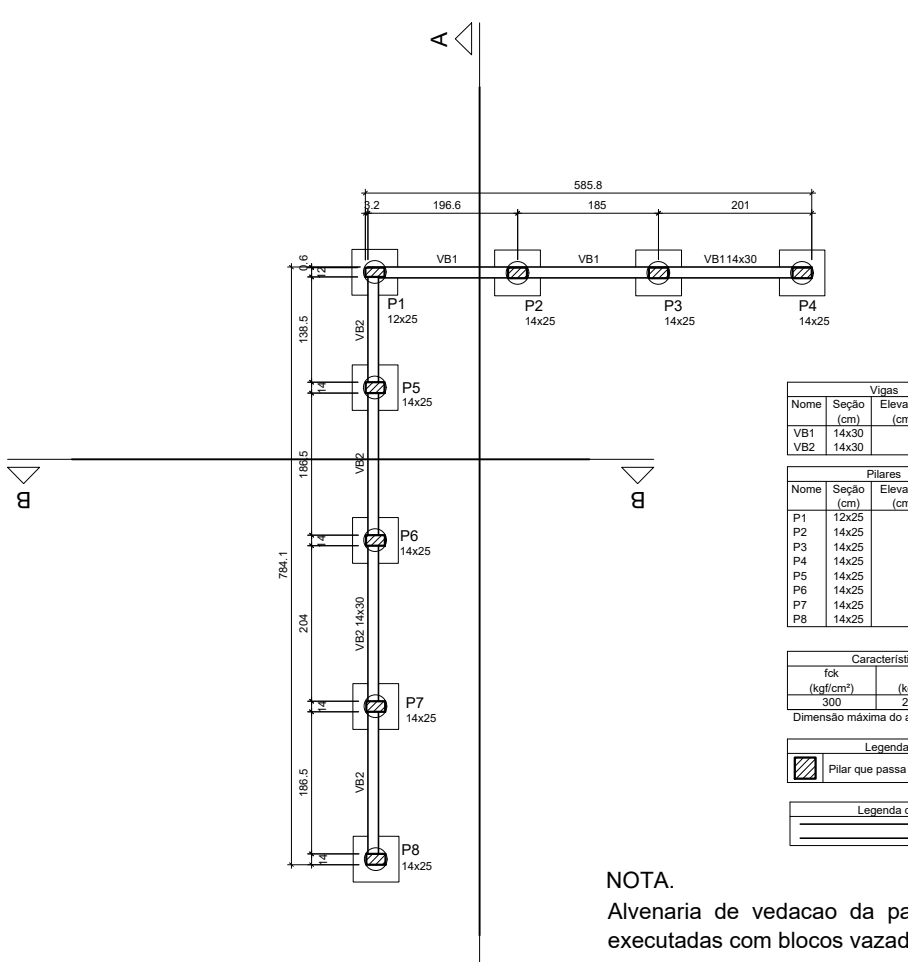
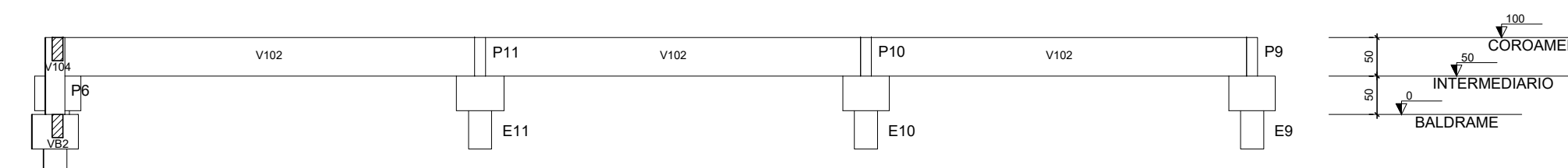
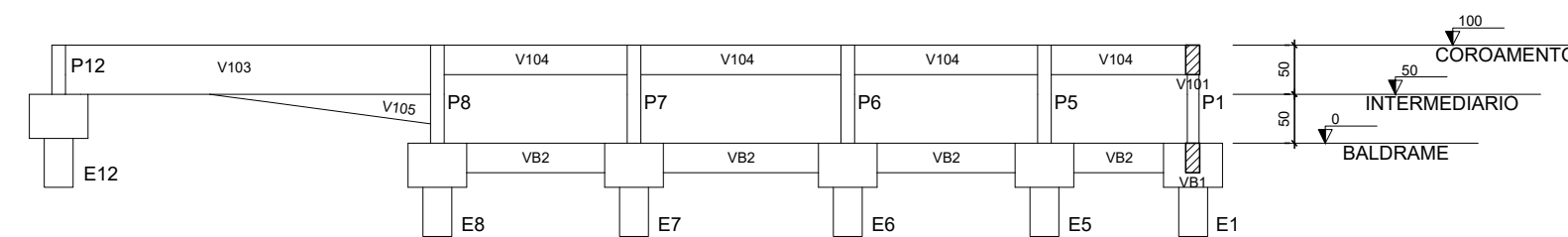
RELAÇÃO DO AÇO

ELEMENTO	ACO	N	DIAM (mm)	QUANT	C.UNIT (mm)	C.TOTAL (mm)
B0011	CASO	2	10,0	32	110	3520
B0012	CASO	2	10,0	16	45	720

RESUMO DO AÇO

ACO	DIAM (mm)	C.TOTAL (mm)	PESO (kg)
CASO	10,0	3520	32,4
CASO	10,0	720	6,6
PESO TOTAL			39,0

Volume de concreto (C-30) = 1,28 m³  
Área de forma = 7,04 m²



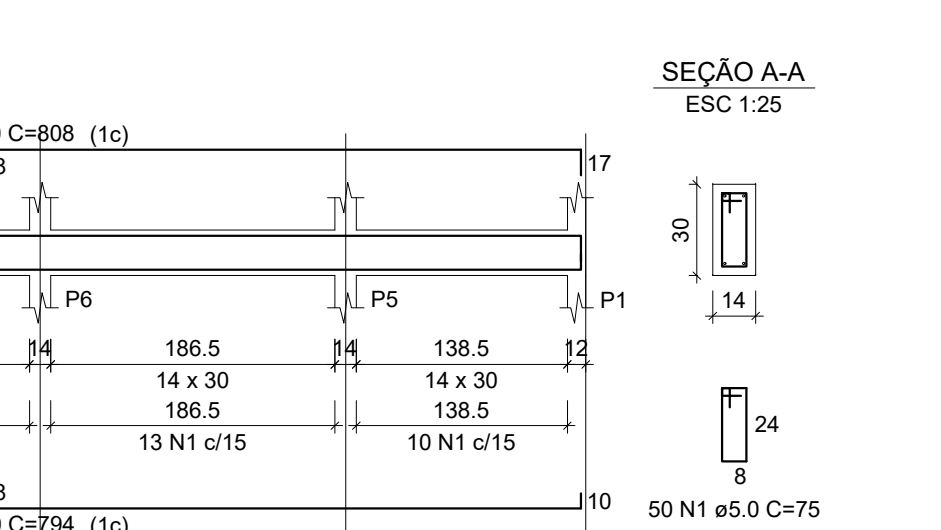
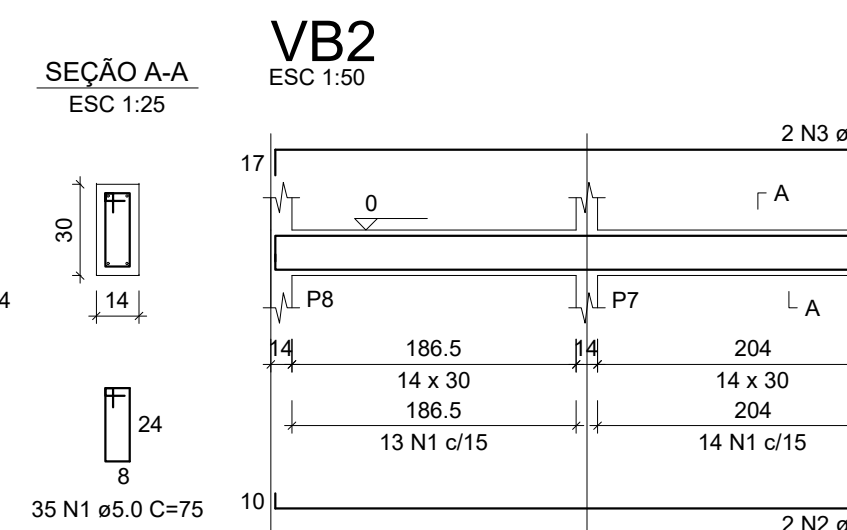
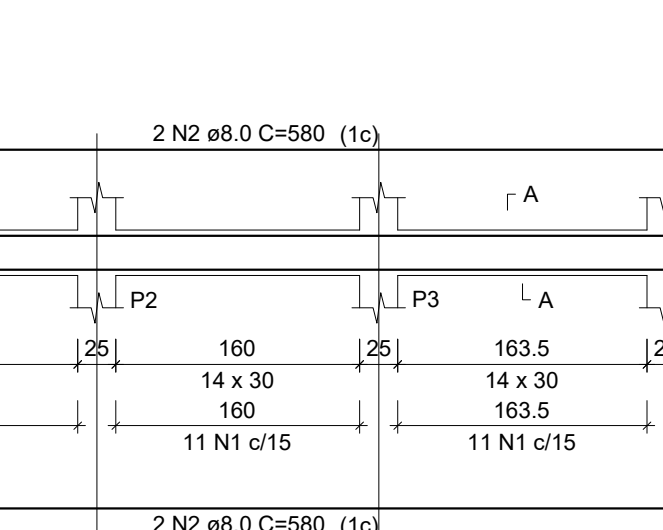
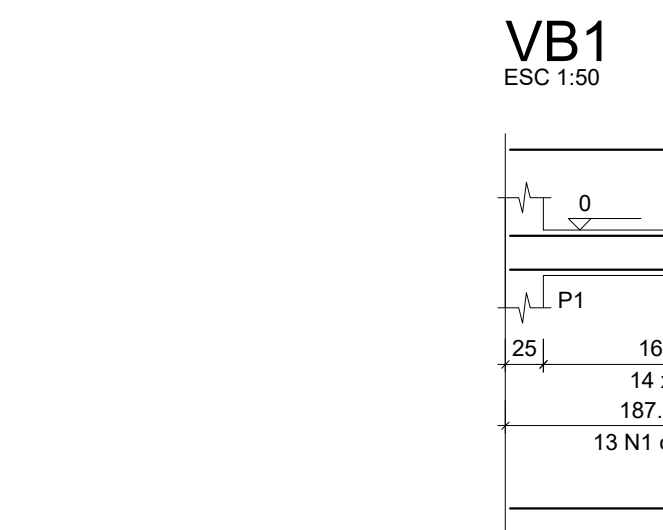
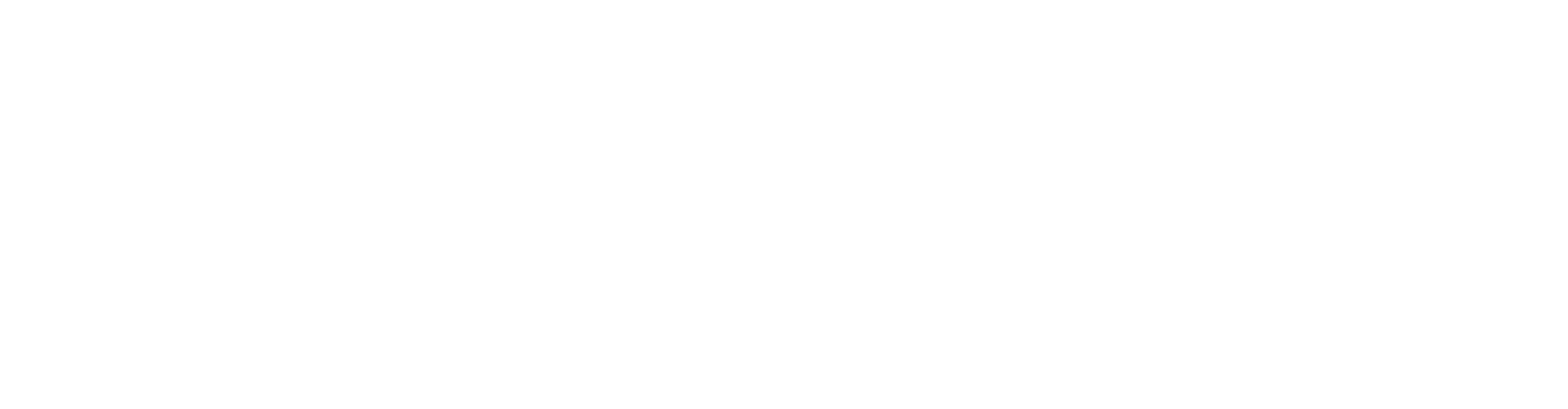
RELAÇÃO DO AÇO

ELEMENTO	ACO	N	DIAM (mm)	QUANT	C.UNIT (mm)	C.TOTAL (mm)
V101	CASO	2	8,0	2	100	200
V102	CASO	2	8,0	2	100	200
V103	CASO	2	8,0	2	100	200
V104	CASO	2	8,0	2	100	200
V105	CASO	2	8,0	2	100	200

RESUMO DO AÇO

ACO	DIAM (mm)	C.TOTAL (mm)	PESO (kg)
CASO	8,0	1000	39,6
PESO TOTAL			39,6

Volume de concreto (C-30) = 1,50 m³  
Área de forma = 15,00 m²



RELAÇÃO DO AÇO

ELEMENTO	ACO	N	DIAM (mm)	QUANT	C.UNIT (mm)	C.TOTAL (mm)
VB1	CASO	2	8,0	2	100	200
VB2	CASO	2	8,0	2	100	200

RESUMO DO AÇO

ACO	DIAM (mm)	C.TOTAL (mm)	PESO (kg)
CASO	8,0	400	15,8
PESO TOTAL			15,8

Volume de concreto (C-30) = 0,58 m³  
Área de forma = 11,12 m²

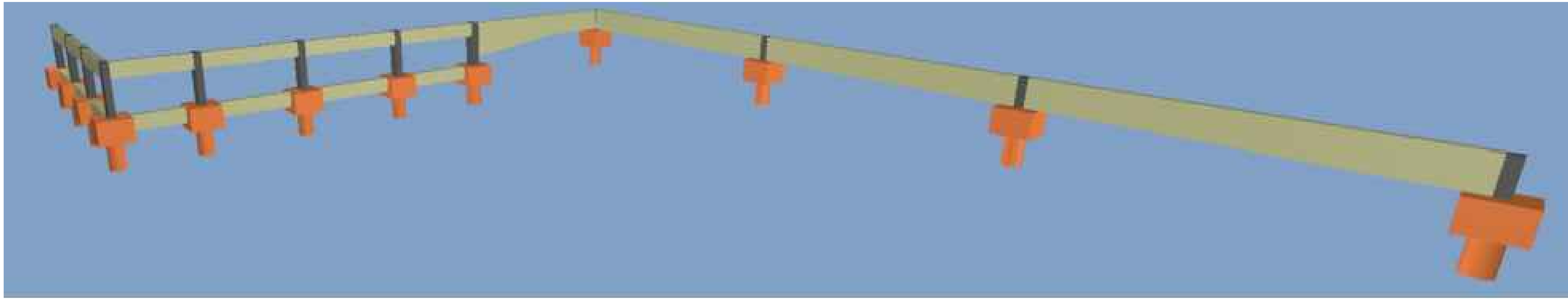


IMAGEM 3D - SEM ESCALA - MERAMENTE ILUSTRATIVA

PROJETO				
REVISÃO				
PROPRIETÁRIO	ADMINISTRAÇÃO REGIONAL DO NÚCLEO BANDERANTE			
AUTOR DO PROJETO	ENGR. CIVIL - TIBURCIO JOSÉ SOARES MARTINS			
RESP. TÉCNICO	ENGR. CIVIL - TIBURCIO JOSÉ SOARES MARTINS			
DATA	15/02/2021			
INDICADA	PROJ-DE-008-20-STR-PE-012-DET-GER-R00			
PROJETO	PROJETO EXECUTIVO DE ESTRUTURA EM CONCRETO ARMADO			
CONTEÚDO	REFORMA E AMPLIAÇÃO DA FEIRA DO NÚCLEO BANDERANTE			
DETALHAMENTO	DETALHAMENTO GERAL DA ESTRUTURA DA			
CONTENÇÃO	CONTENÇÃO PROVA DO ESTACIONAMENTO			
ESCALA	1:50			
INDICADA	PROJ-DE-008-20-STR-PE-012-DET-GER-R00			

STR 012

REV.00

FORMATO DA PLANÇA: A0 (1189x841mm)