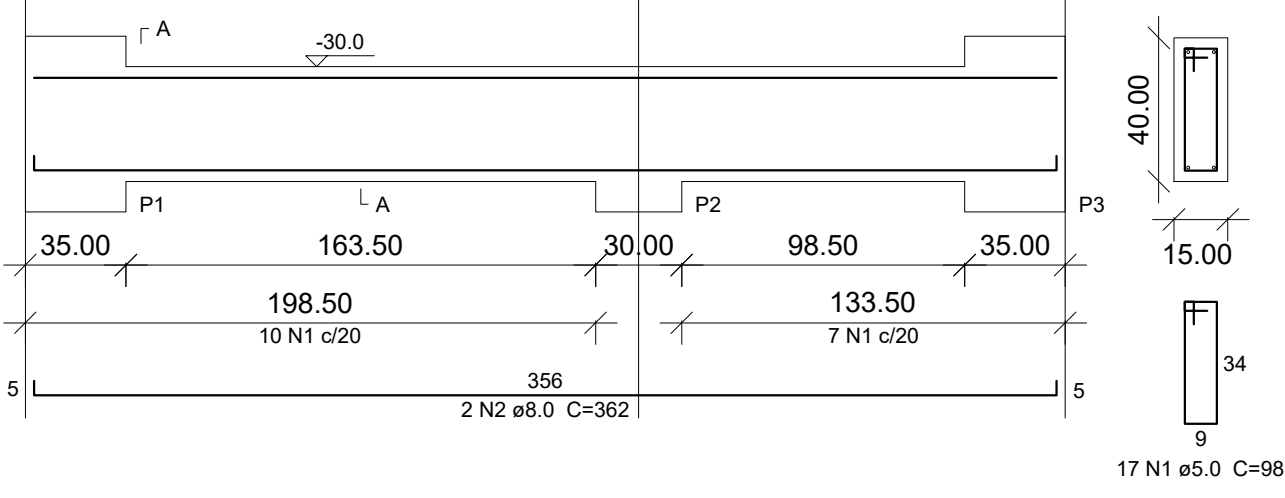


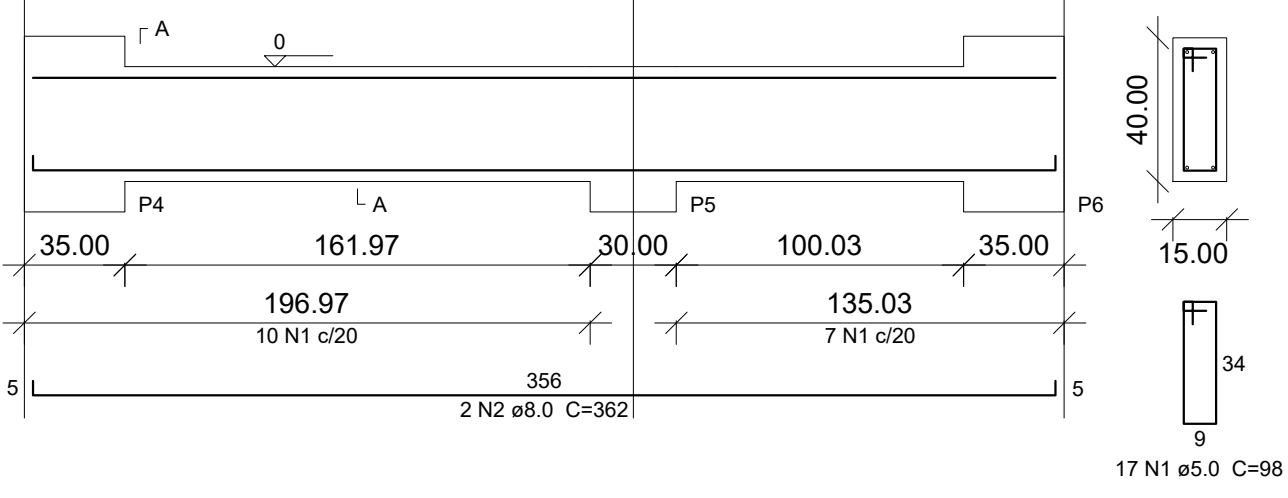
VB1

ESC 1:25



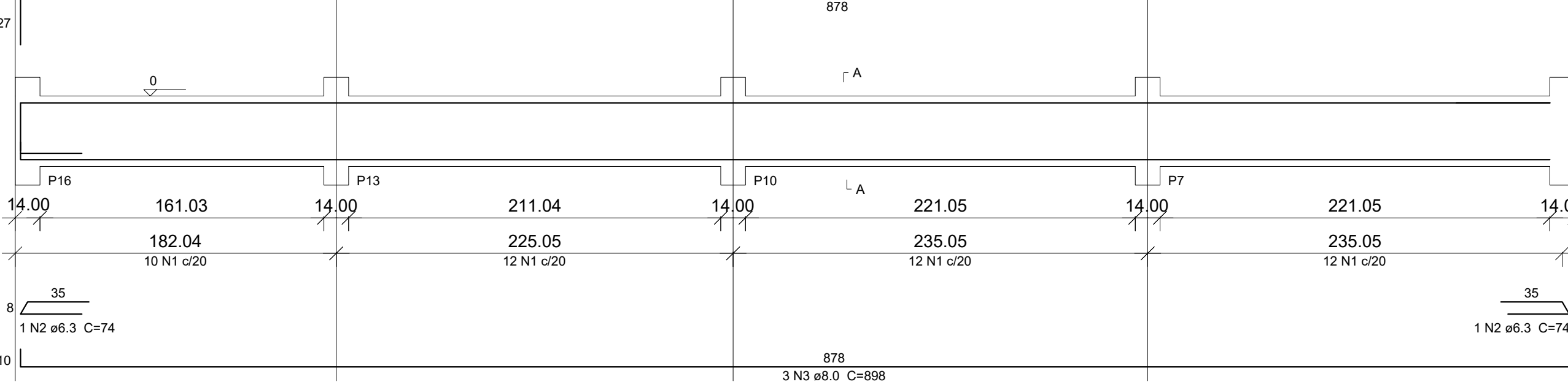
VB2

ESC 1:25



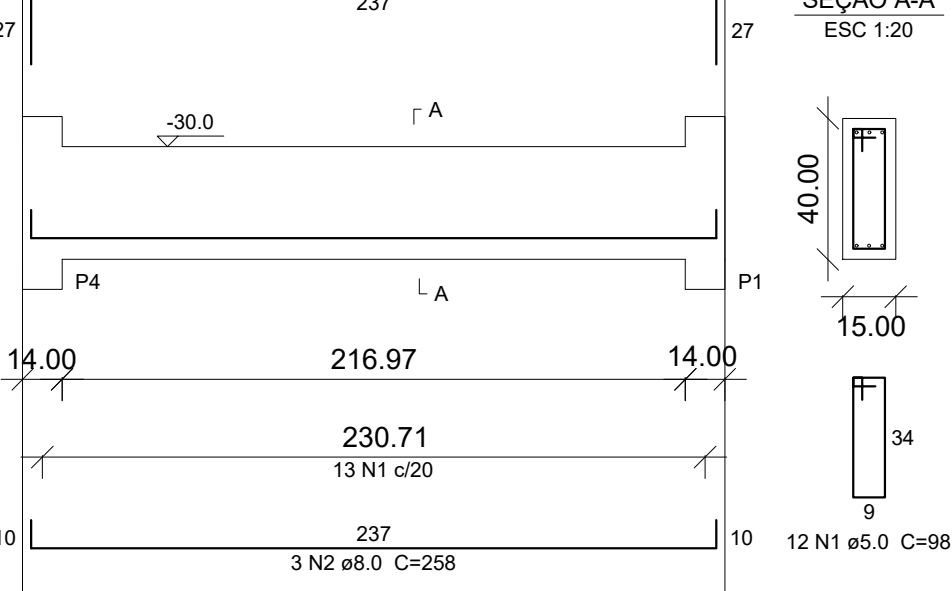
VB7

ESC 1:25



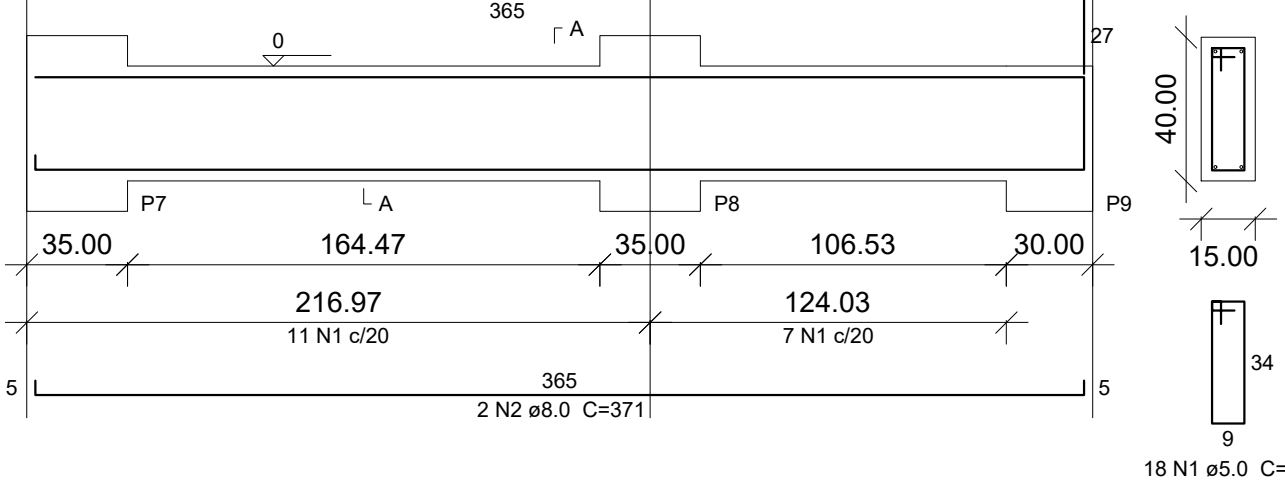
VB8

ESC 1:25



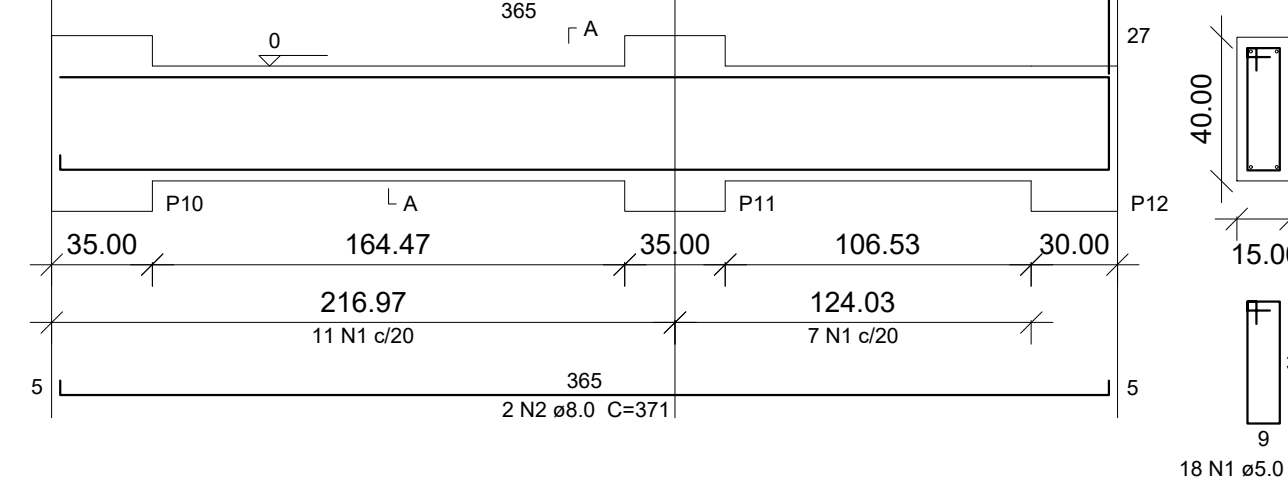
VB3

ESC 1:25



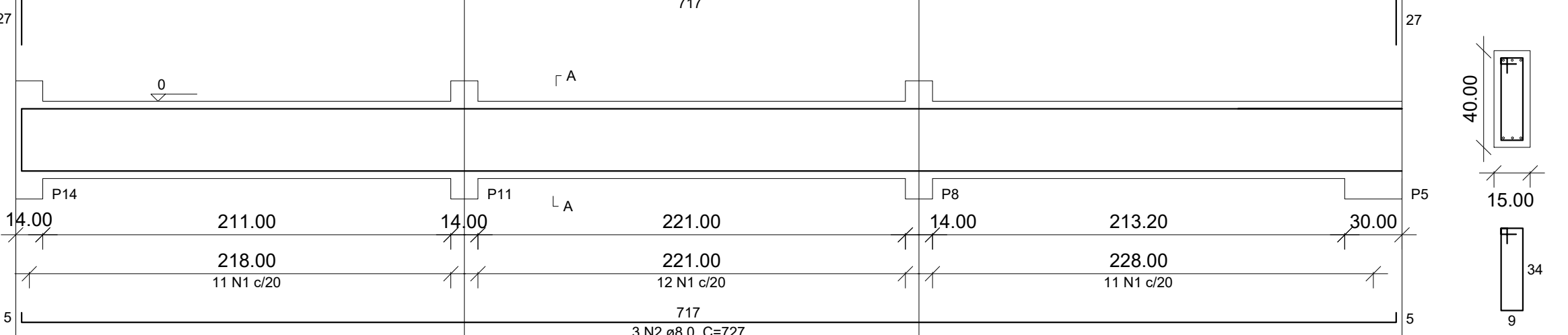
VB4

ESC 1:25



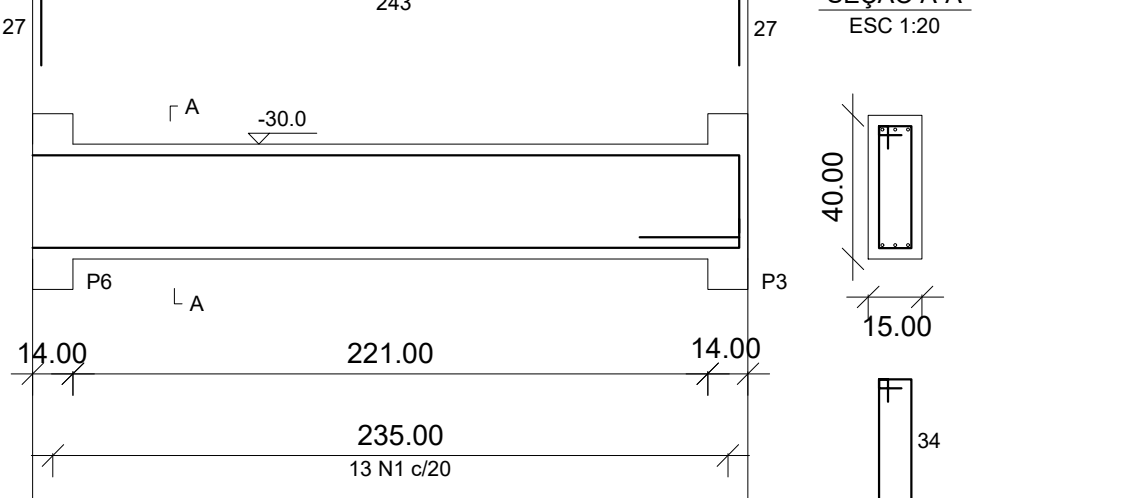
VB9

ESC 1:25



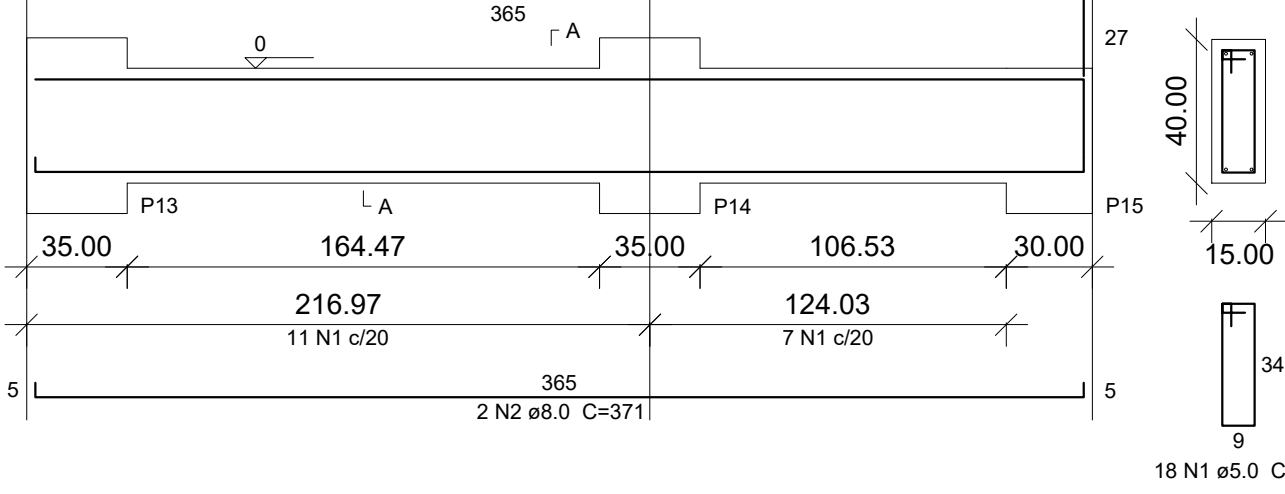
VB12

ESC 1:25



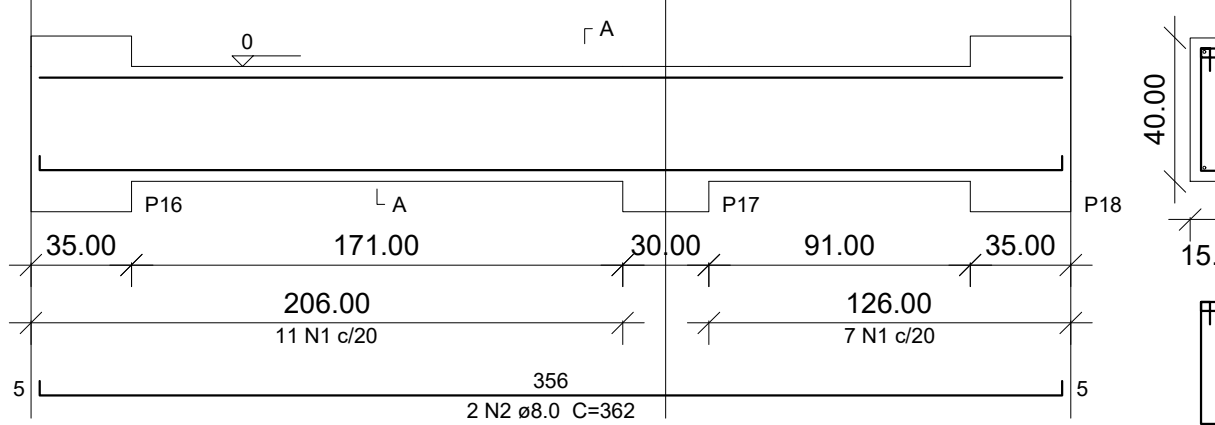
VB5

ESC 1:25



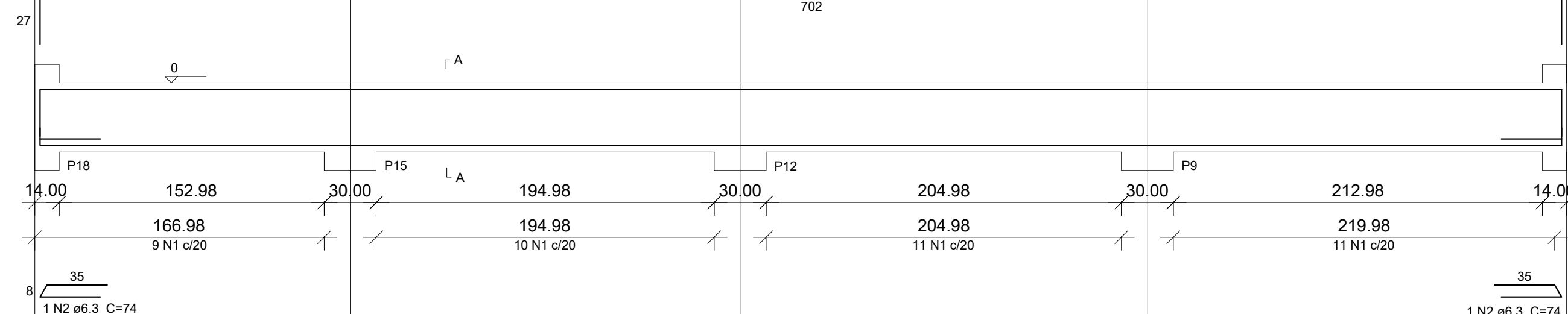
VB6

ESC 1:25



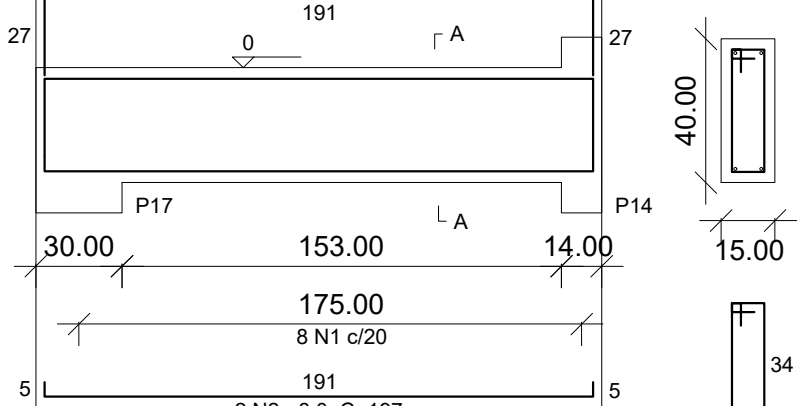
VB11

ESC 1:25



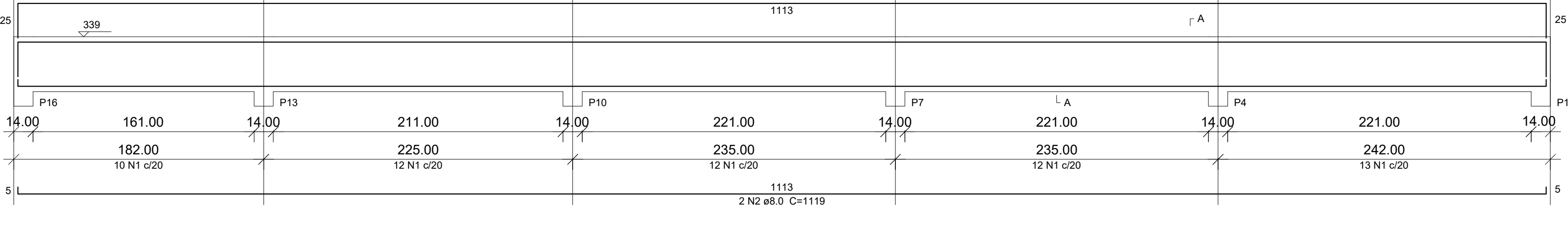
VB10

ESC 1:25



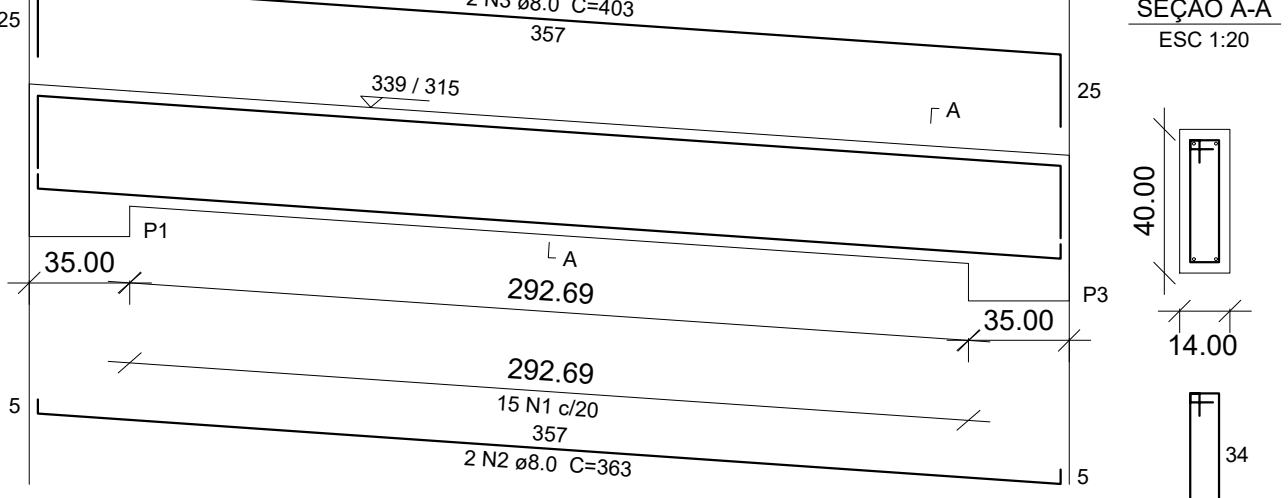
V100

ESC 1:25



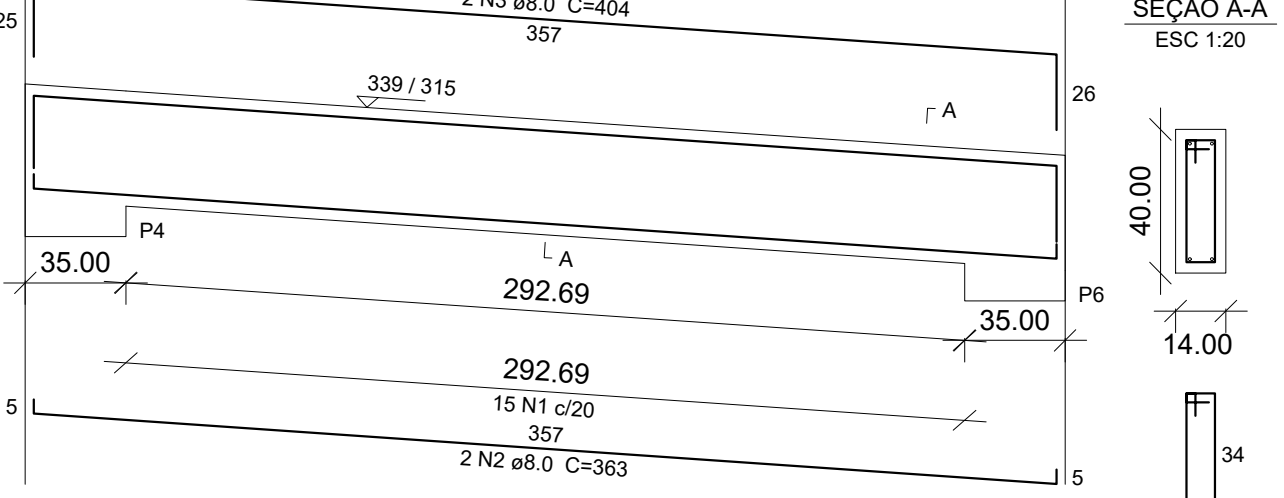
V102

ESC 1:25



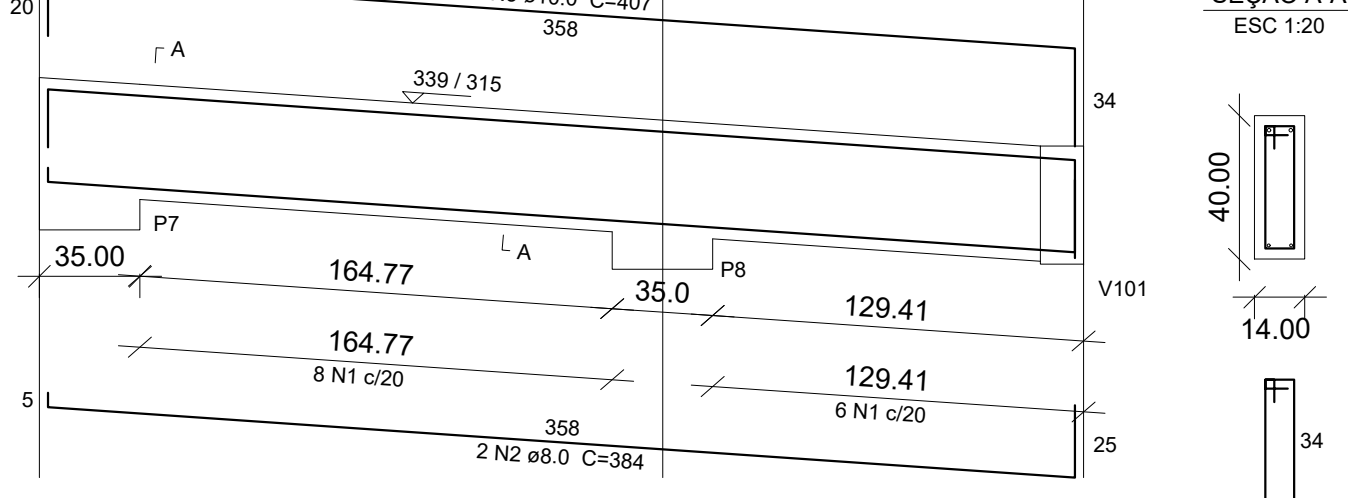
V103

ESC 1:25



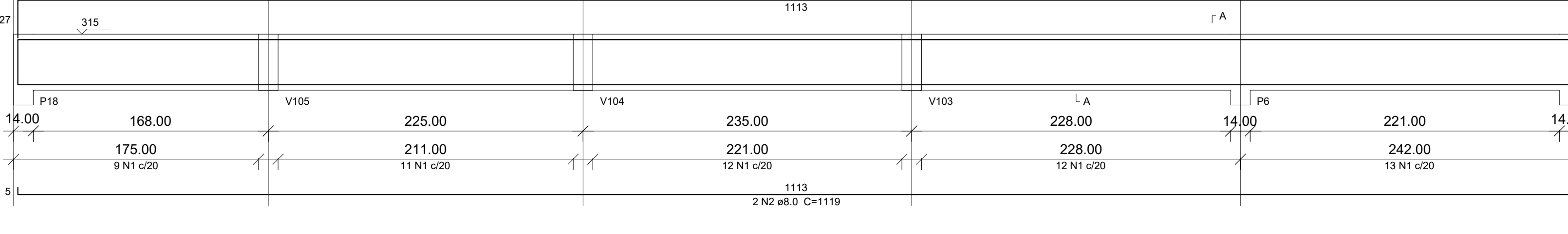
V104

ESC 1:25



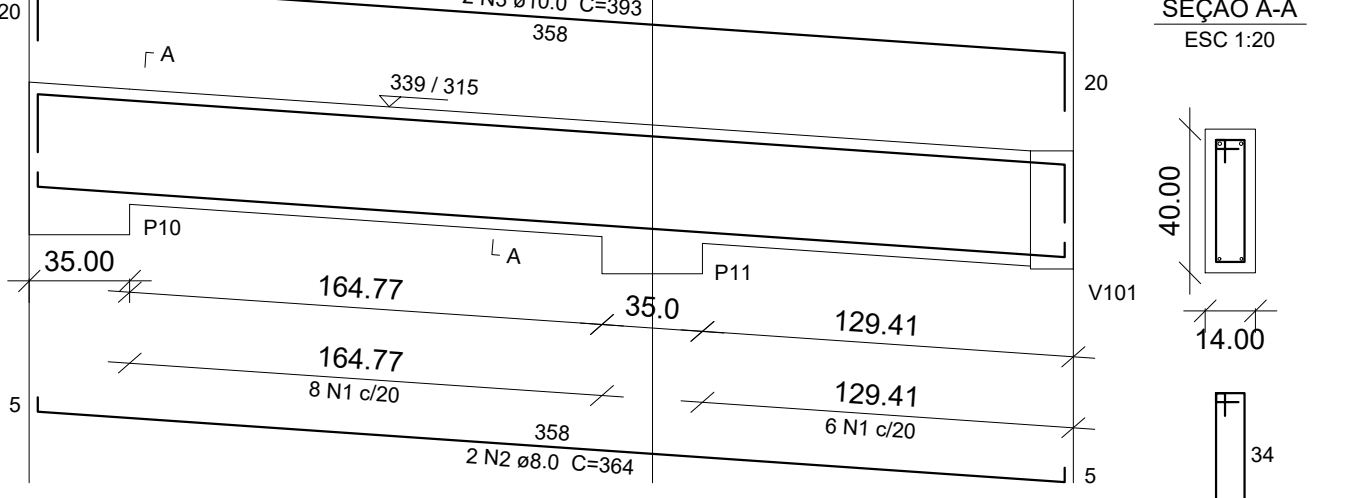
V101

ESC 1:25



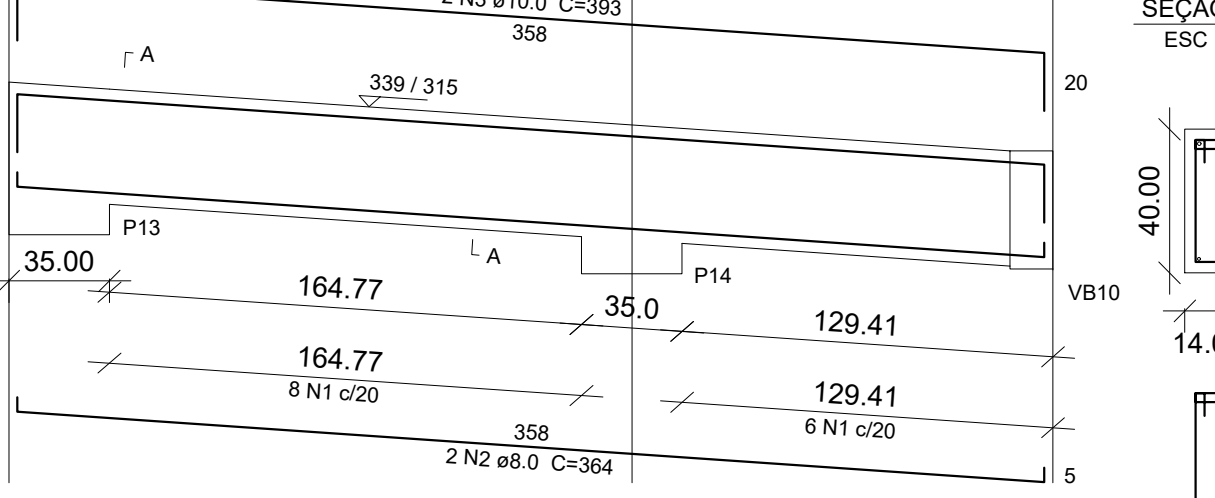
V105

ESC 1:25



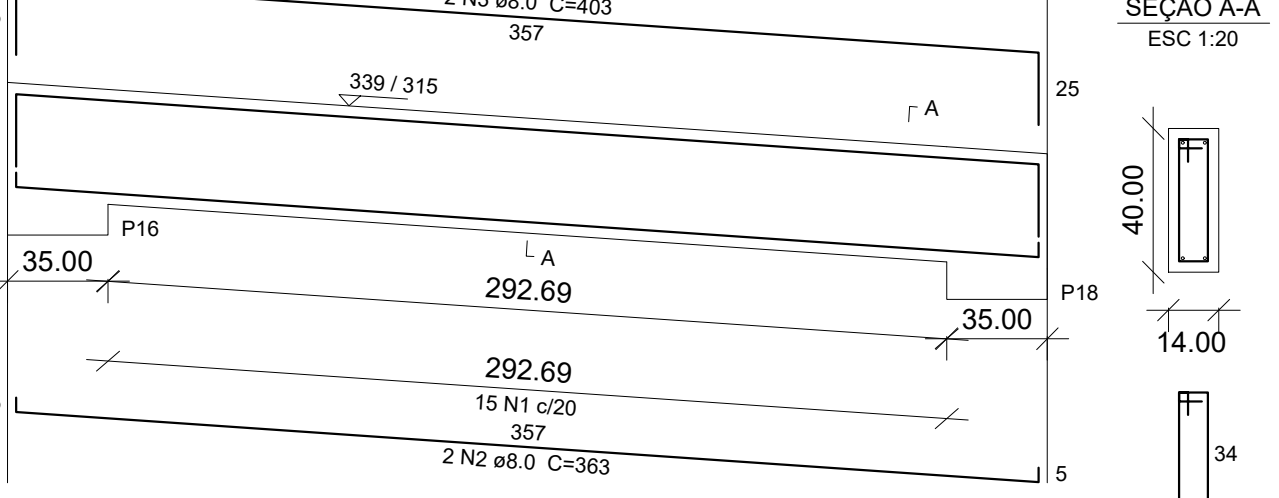
V106

ESC 1:25



V107

ESC 1:25



Relação do aço									
ELEMENTO	AÇO	N	DIAM	QUANT	UNIT	C	TOTAL	UNIT	TOTAL
COBERTURA									
V100	CA50	1	5.0	99	96	9664			
	CA50	2	8.0	2	1119	2238			
	CA50	3	8.0	2	1159	2318			
V101	CA50	2	8.0	2	1119	2238			
	CA50	2	8.0	2	1159	2318			
V102	CA50	1	5.0	15	96	1440			
	CA50	2	8.0	2	363	726			
V103	CA50	1	5.0	15	96	1440			
	CA50	2	8.0	2	363	726			
V104	CA50	3	8.0	2	404	808			
	CA50	3	8.0	2	404	808			
V105	CA50	1	5.0	15	96	1440			
	CA50	2	8.0	2	363	726			
V106	CA50	3	8.0	2	404	808			
	CA50	3	8.0	2	404	808			
V107	CA50	1	5.0	15	96	1440			
	CA50	2	8.0	2	363	726			
V108	CA50	1	5.0	15	96	1440			
	CA50	2	8.0	2	363	726			
V109	CA50	1	5.0	15	96	1440			
	CA50	2	8.0	2	363	726			
V110	CA50	1	5.0	15	96	1440			
	CA50	2	8.0	2	363	726			
BALDRAME									
VB1	CA50	1	5.0	17	96	1632			
	CA50	2	8.0	2	363	726			
	CA50	3	8.0	2	363	726			
VB2	CA50	1	5.0	17	96	1632			
	CA50	2	8.0	2	363	726			
VB3	CA50	1	5.0	17	96	1632			
	CA50	2	8.0	2	363	726			
VB4	CA50	1	5.0	17	96	1632			
	CA50	2	8.0	2	363	726			
VB5	CA50	1	5.0	17	96	1632			
	CA50	2	8.0	2	363	726			
VB6	CA50	1	5.0	17	96	1632			
	CA50	2	8.0	2	363	726			
VB7	CA50	1	5.0	17	96	1632			
	CA50	2	8.0	2	363	726			
VB8	CA50	1	5.0	17	96	1632			
	CA50	2	8.0	2	363	726			
VB9	CA50	1	5.0	17	96	1632			
	CA50	2	8.0	2	363	726			
VB10	CA50	1	5.0	17	96	1632			
	CA50	2	8.0	2	363	726			
VB11	CA50	1	5.0	17	96	1632			
	CA50	2	8.0	2	363	726			
VB12	CA50	1	5.0	17	96	1632			
	CA50	2	8.0	2	363	726			

Resumo do aço				
AÇO	DIAM (mm)	C.TOTAL (m)	PESO	
CA50	8.3	3		
	8.0	434.4		
	10.0	23.9		
CA60	5.0	457.5		
PESO TOTAL (kg)				
CA50	205.5			
CA60	77.6			