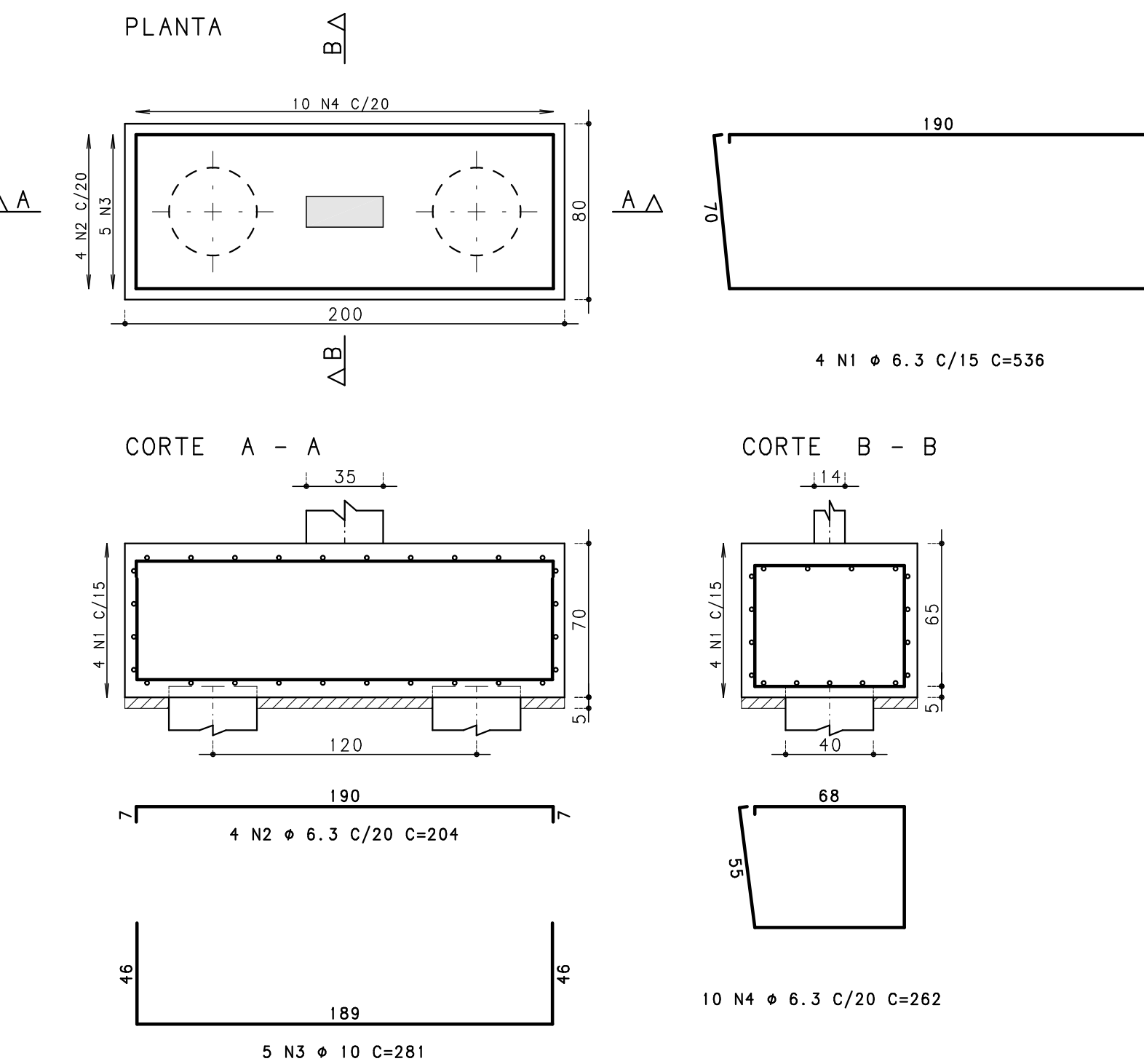


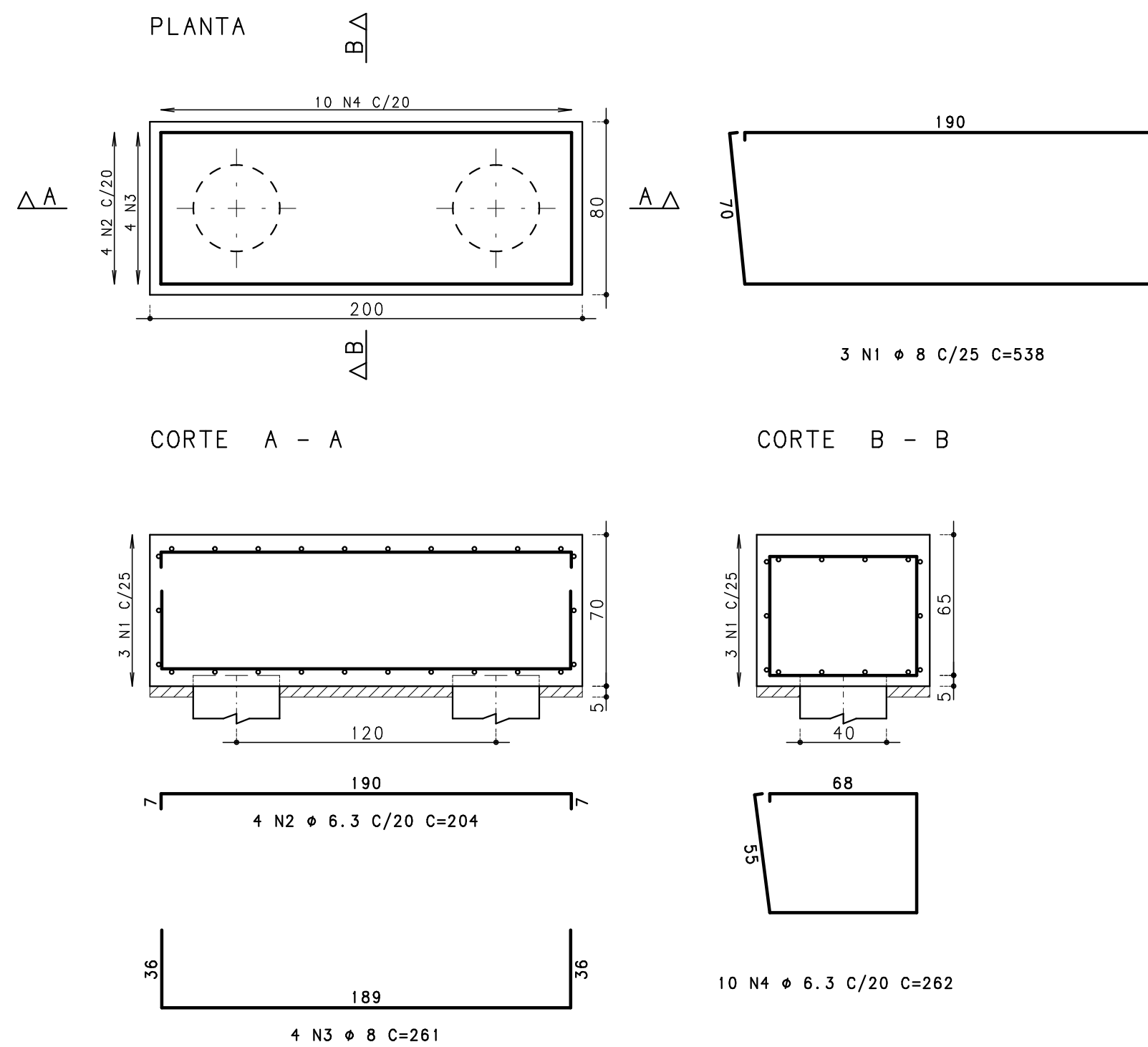
ACO	POS	BIT (mm)	QUANT	COMPRIMENTO (cm)	UNIT	TOTAL (cm)
B3=B1=B2=B4=B5=B6=B7=B8=B9=B10=B11=B12=B13						
=B14=B15=B16=B17=B18 (X18)						
50A	1	6.3	72	538	38592	
50A	2	6.3	72	204	14688	
50A	3	10	90	281	25290	
50A	4	6.3	180	262	47160	
BT1=BT2 (X2)						
50A	1	8	8	538	3278	
50A	2	6.3	8	204	1632	
50A	3	8	8	261	2088	
50A	4	6.3	20	262	5240	
V100						
60B	1	5	2	238	476	
50A	2	10	4	179	716	
60B	3	5	4	250	1000	
50A	4	10	4	292	1168	
50A	5	10	2	298	596	
60B	6	5	2	239	478	
50A	7	8	4	488	1952	
50A	8	8	4	480	1920	
60B	9	5	88	105	9240	
V101						
60B	1	5	2	238	476	
50A	2	10	4	179	716	
60B	3	5	2	239	478	
50A	4	10	2	287	574	
50A	5	8	4	488	1952	
60B	6	5	44	105	4620	
V102						
60B	1	5	2	238	476	
60B	3	5	4	250	1000	
50A	4	10	2	292	584	
50A	5	10	2	298	596	
60B	6	5	2	239	478	
50A	7	8	4	488	1952	
50A	8	8	4	480	1920	
60B	9	5	88	105	9240	
V103						
60B	1	5	2	238	476	
50A	2	10	4	179	716	
60B	3	5	2	239	478	
50A	4	10	2	287	574	
50A	5	8	4	488	1952	
60B	6	5	44	105	4620	
V104						
60B	1	5	2	233	466	
50A	2	10	4	176	704	
60B	3	5	2	200	400	
50A	4	10	4	265	1060	
60B	5	5	2	234	468	
50A	6	8	4	478	1912	
50A	7	8	2	380	760	
60B	8	5	58	105	6190	
V105						
60B	1	5	2	233	466	
50A	2	10	2	176	704	
60B	3	5	2	200	400	
50A	4	10	4	265	1060	
60B	5	5	2	234	468	
50A	6	8	4	478	1912	
50A	7	8	2	380	760	
60B	8	5	58	105	6190	

RESUMO ACO CA 50-60			
ACO	BIT (mm)	COMPR (m)	PESO (kg)
60B	5	486	75
50A	6.3	1073	263
50A	8	223	88
50A	10	384	224
Peso Total			608 = 75 kg
Peso Total			50A = 575 kg

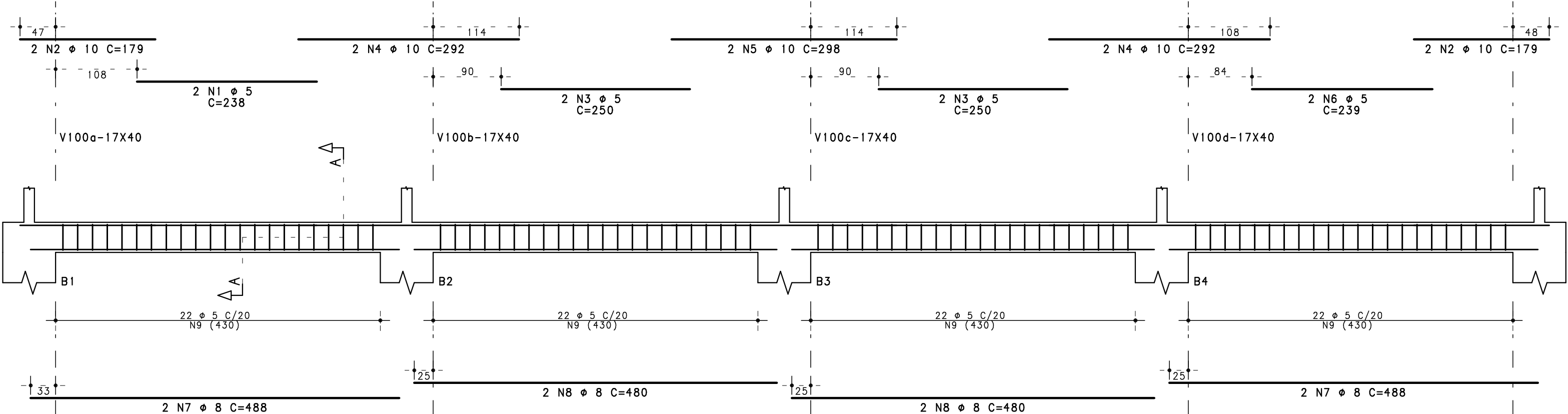
B3=B1=B2=B4=B5=B6=B7=B8=B9=B10=B11=B12=B13=B14=B15=B16=B17=B18
(ESCALA 1:25)



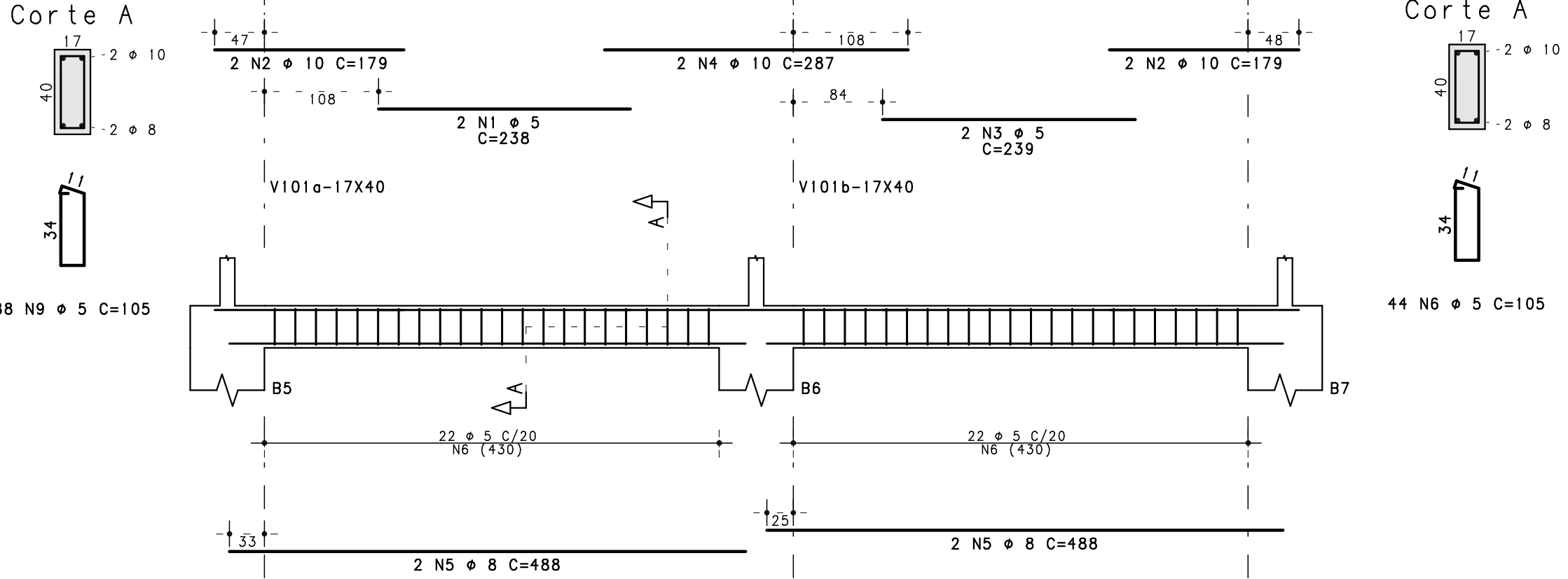
BT1=BT2
(ESCALA 1:25)



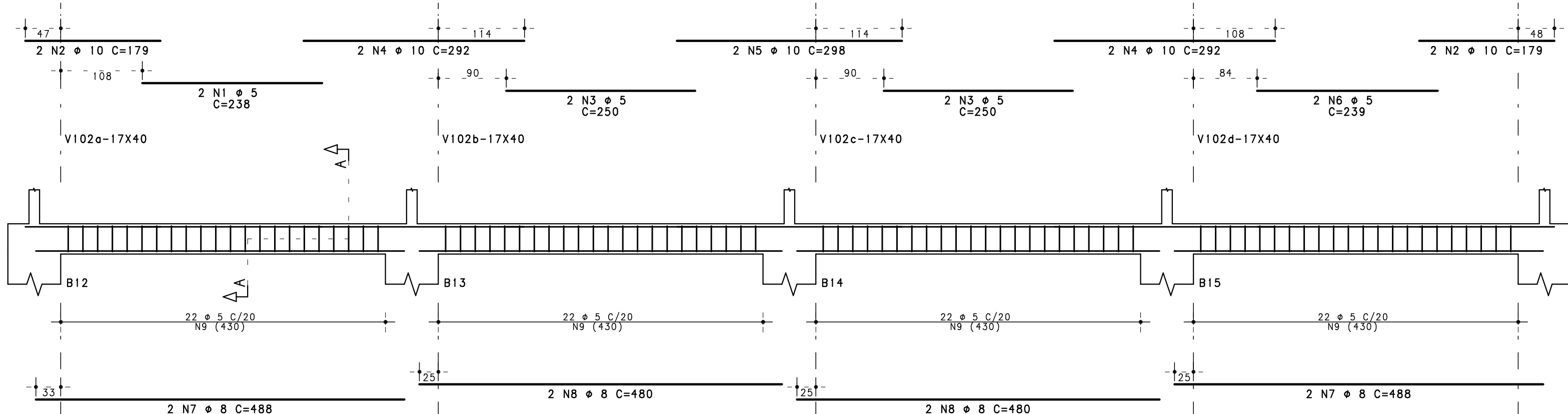
V100



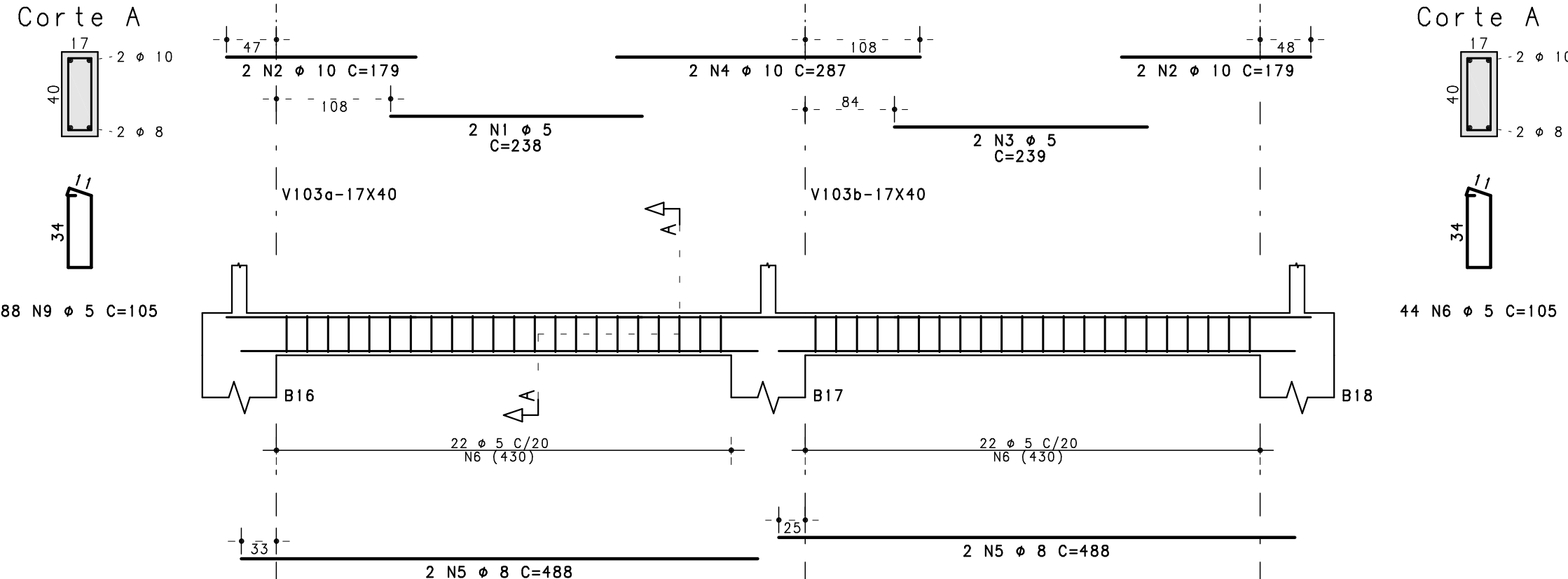
V101



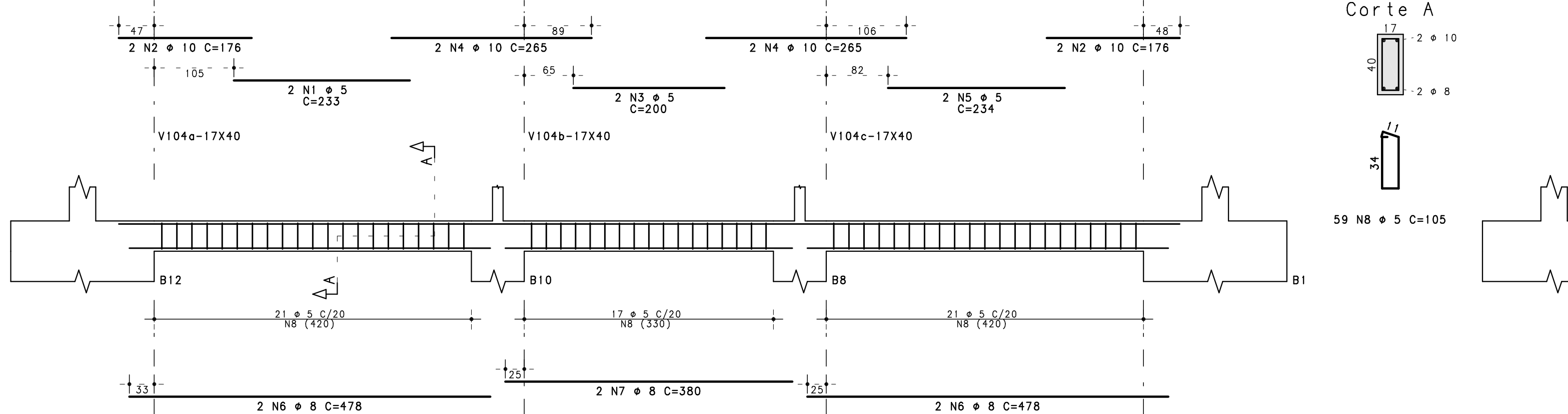
V102



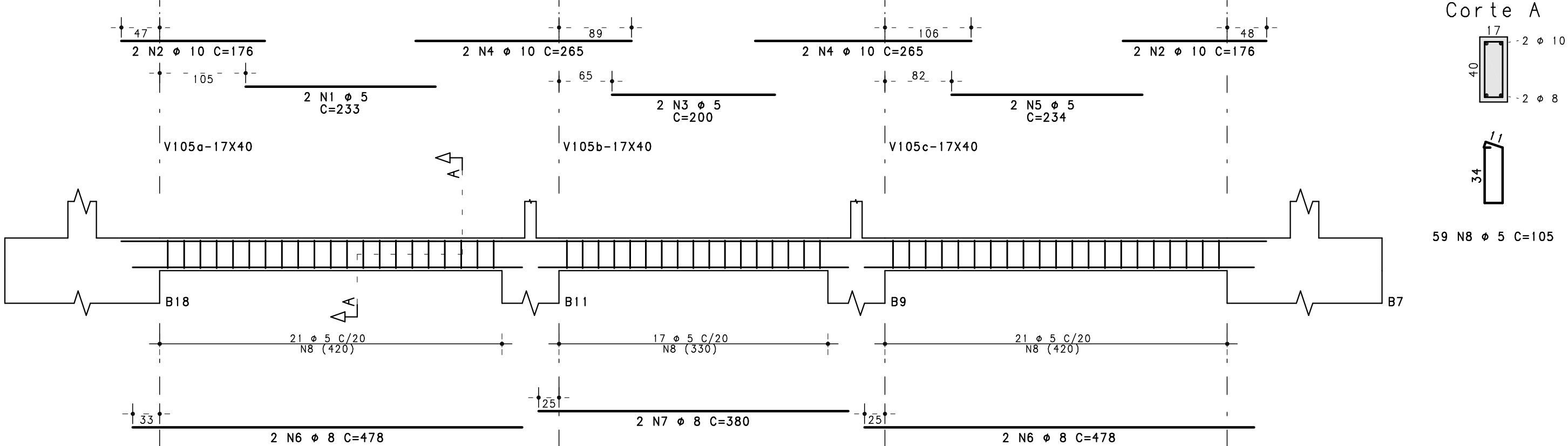
V103



V104



V105



CONCRETO : FCK = 30 MPa

10		
09		
08		
07		
06		
05		
04		
03		
02		
01		
00		

REV. MODIFICAÇÃO DATA: RESP.

SETOR: SAMAMBAIA
ENDEREÇO: QS 425 - AE 02 SAMAMBAIA SUL - DF
PROPRIETÁRIO: SECRETARIA DE EDUCAÇÃO DO DISTRITO FEDERAL
AUTOR DO PROJETO: PEDRO LUIZ BERNARDES JÚNIOR ART: 0720180045323
RESP. TÉCNICO:

PROPRIETÁRIO
AUTOR DO PROJETO: PEDRO LUIZ BERNARDES JÚNIOR CREA: 23886/D-DF
RESP. TÉCNICO

RA OUTROS

RA