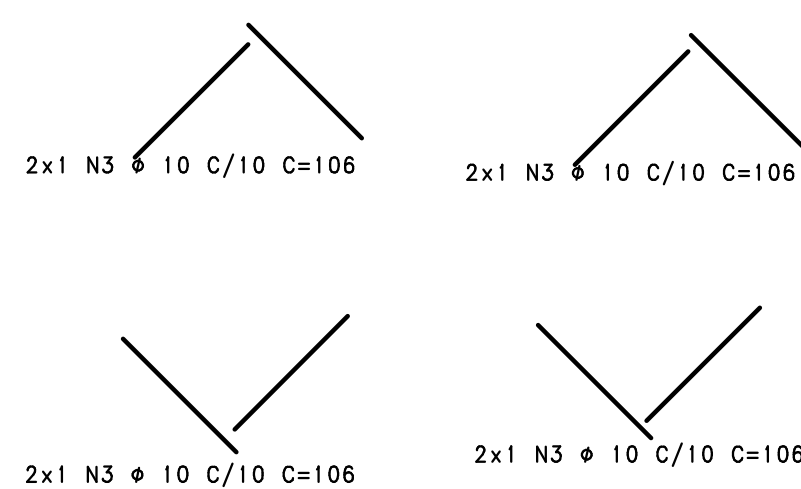
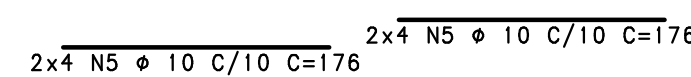
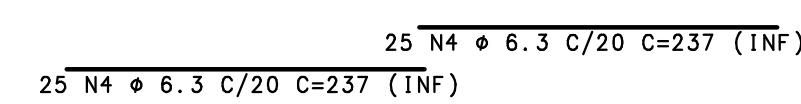
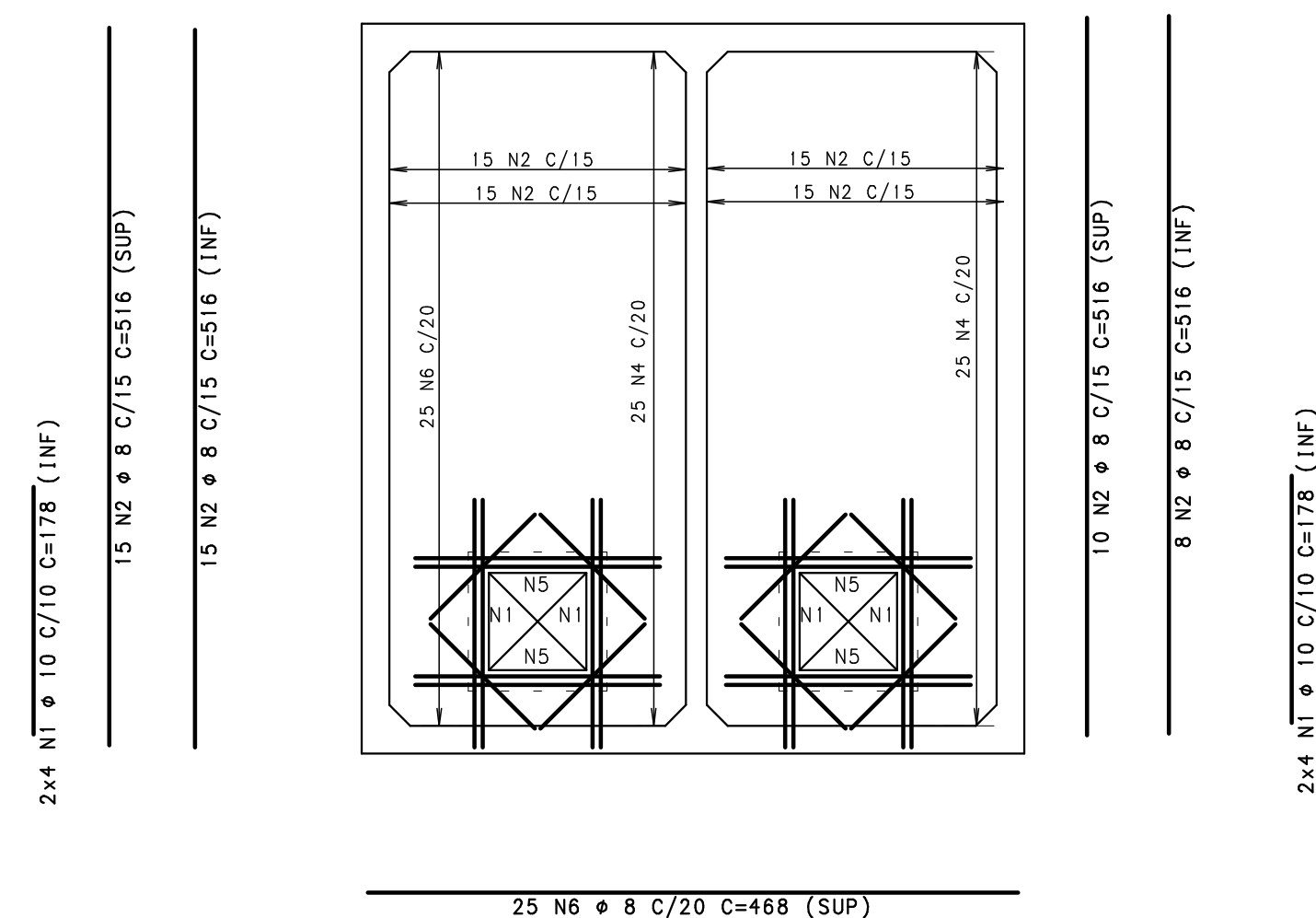
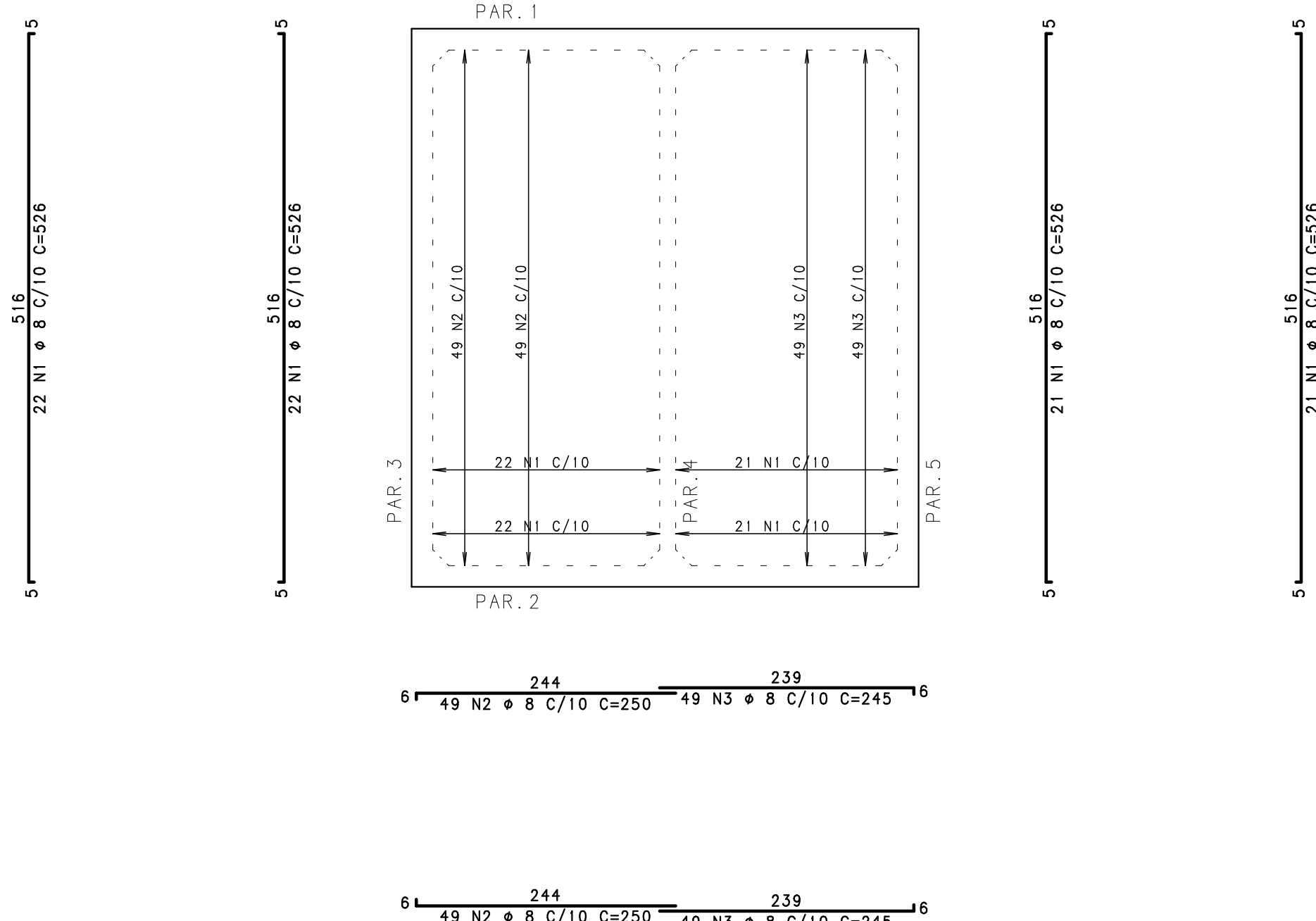
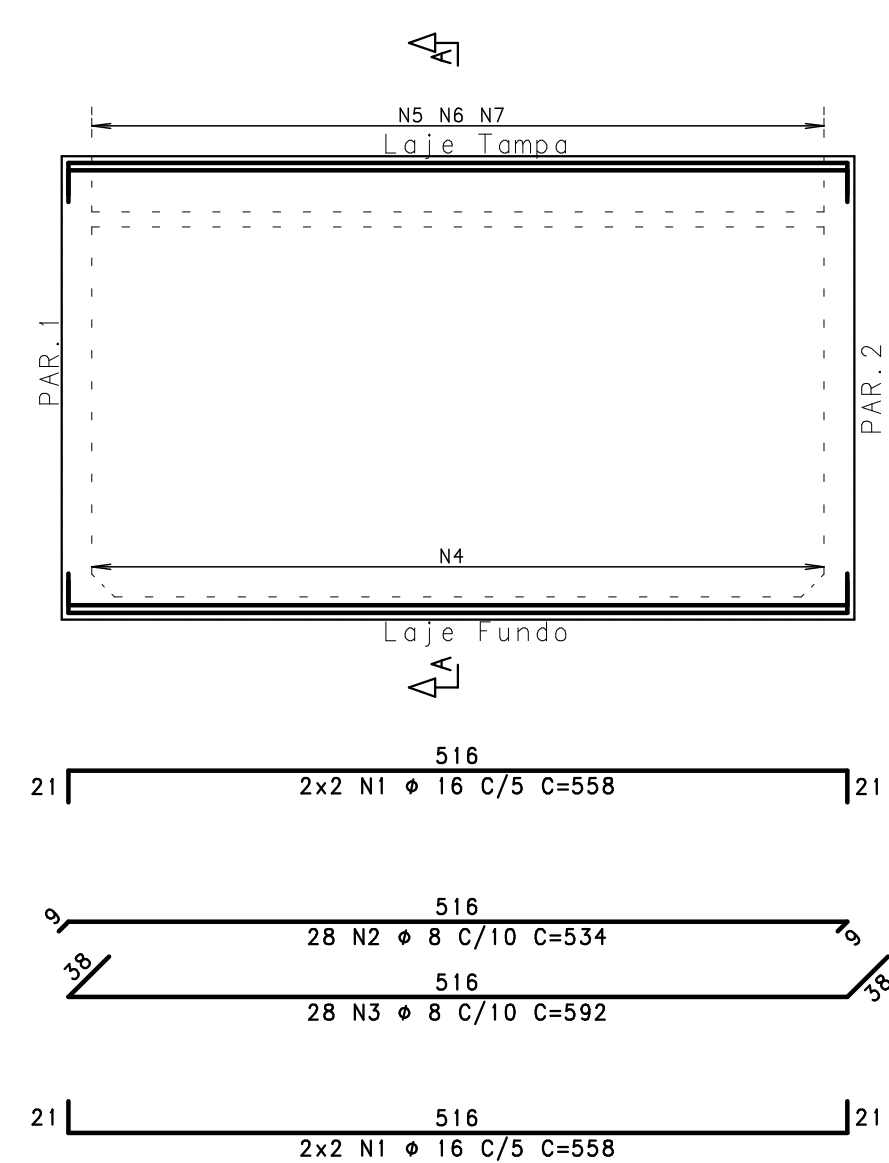


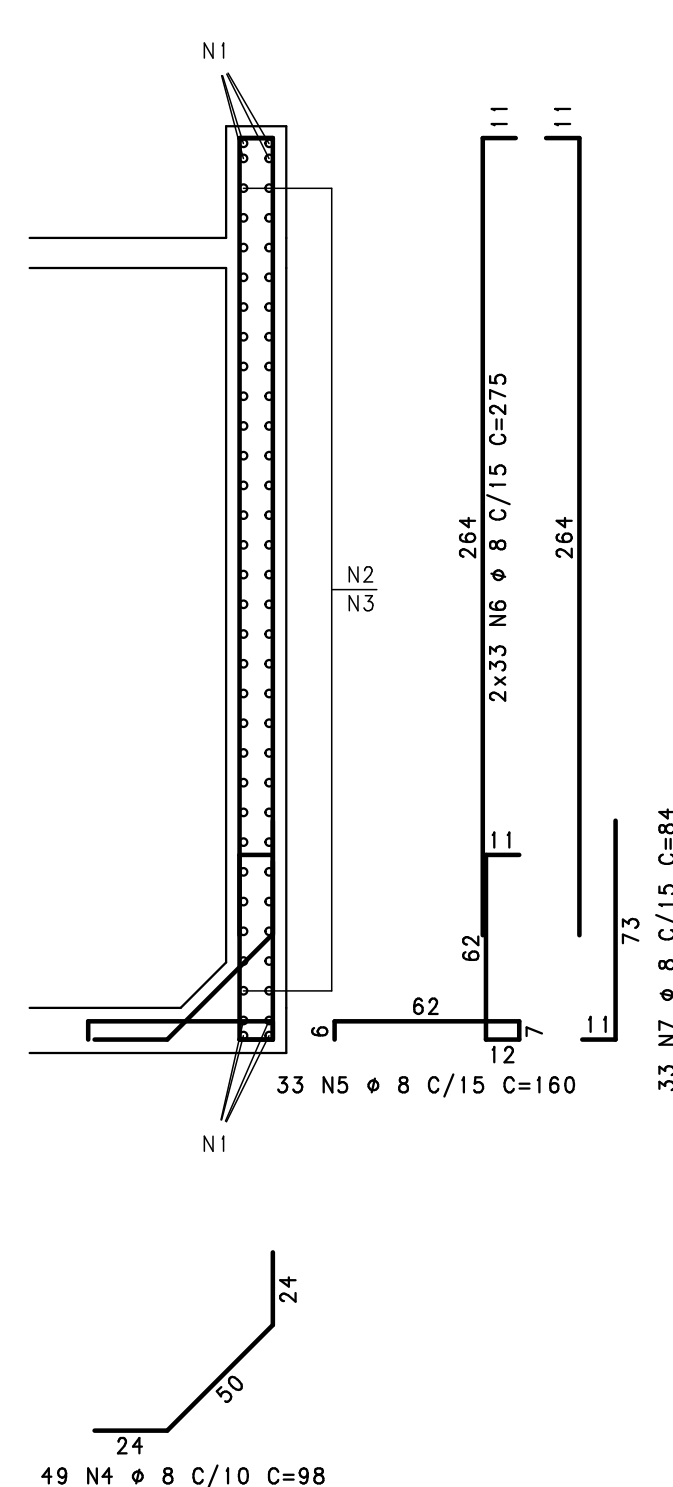
ESCALA: 1/50

(LAJES $h=10\text{cm}$)

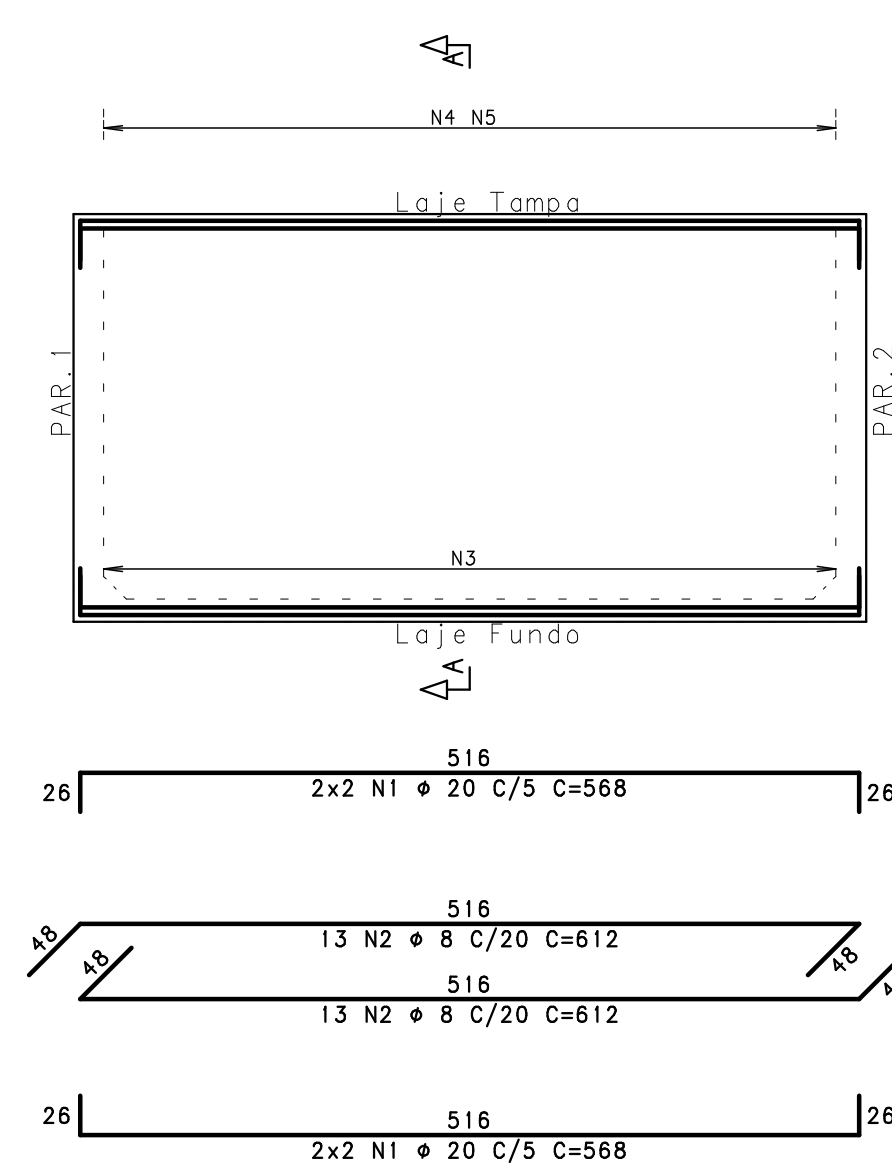
ESCALA: 1/50

(LAJES $h=15\text{cm}$) $2x$ 

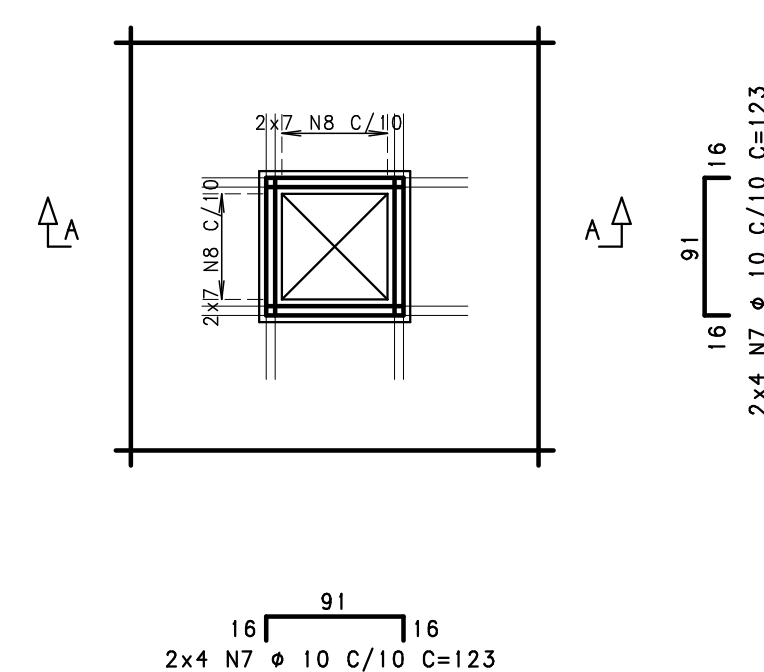
Corte A



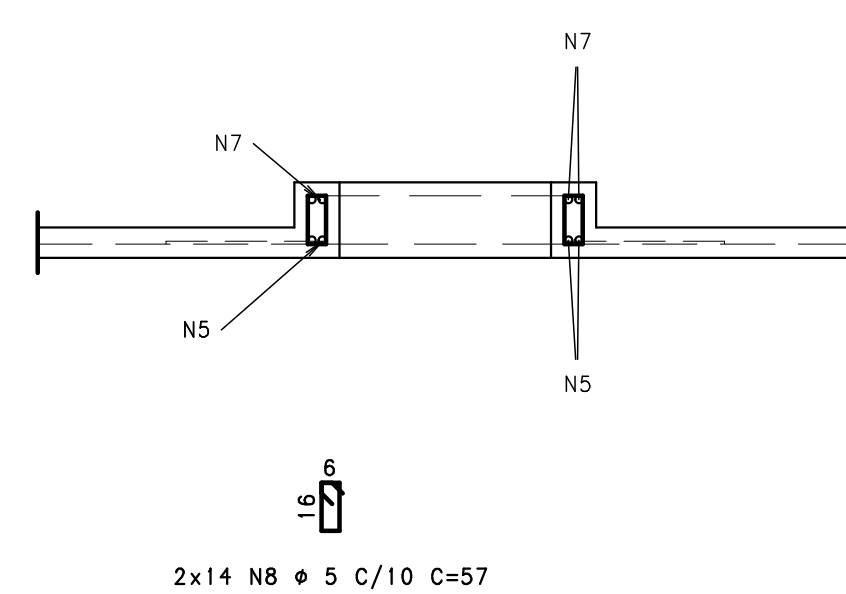
1



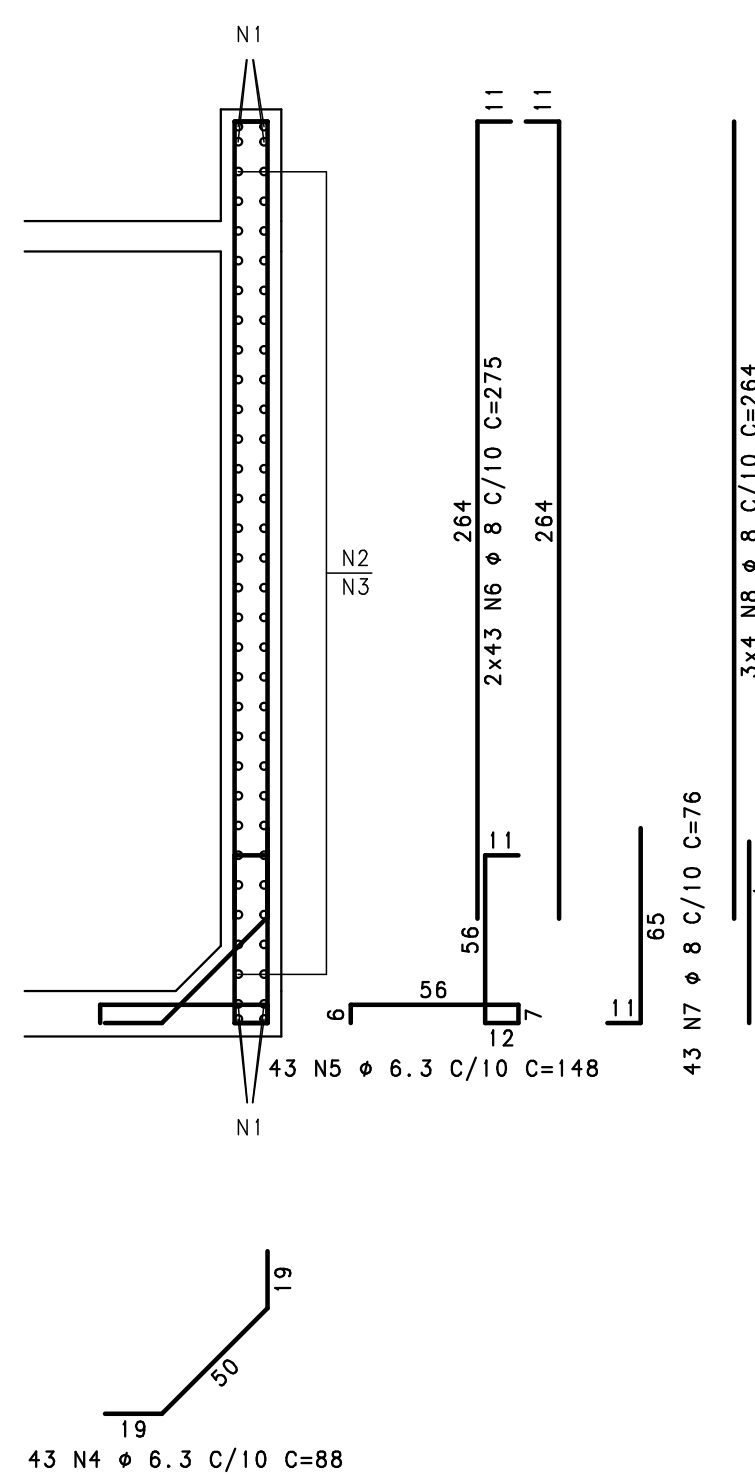
DETALHE DA BORDA DAS ABERTURAS (2X)



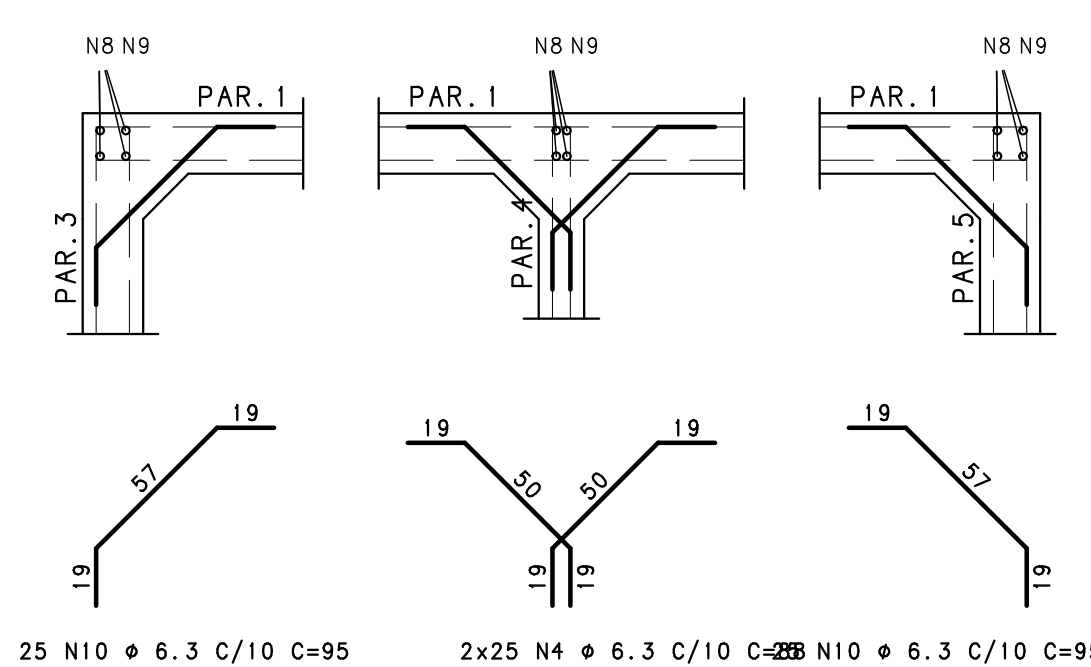
Corte A



CORTE A



ARM.DAS MÍSLAS VERTICAIS
(Planta)



ACO	POS	BIT	QUANT	COMPROMISSO
		(mm)		UNIT TOTAL
ARMAÇÃO DO FUNDO DO RES. SUPERIOR				
50A	1	8	806	526 45236
50A	2	8	250	24500 24500
50A	3	8	98	24500 24500
PARS. 1=PARS. 2 (X2)				
50A	1	16	106	510 28100
50A	2	8	806	488 27328
50A	3	8	129	29568 29568
50A	4	4	180	88 16368
50A	6	8	148	1272 1272
50A	6	8	132	275 47300
50A	7	8	60	76 6536
50A	8	8	60	264 6536
50A	9	8	24	60 1440
50A	10	8	8	1500 1500
PARS. 3=PARS. 5 (X2)				
50A	1	16	106	558 29904
50A	2	8	90	334 29904
50A	3	8	90	592 33152
50A	4	8	80	864 864
50A	5	8	60	80 10560
50A	6	8	132	275 36300
50A	7	8	60	84 5544
PARS. 4				
50A	1	20	8	508 4544
50A	2	8	26	612 15912
50A	3	8	8	864 864
50A	4	10	65	105 10956
50A	6	10	65	133 1376
ARMAÇÃO DA TAMPA DO RES. SUPERIOR				
50A	1	16	106	178 24788
50A	2	8	48	516 24788
50A	3	10	8	108 498
50A	4	10	8	108 11850
50A	5	10	16	176 2816
50A	6	10	16	176 11700
50A	7	10	16	123 12816
50A	8	10	16	47 47

RESUMO ACO CA 50-60			
ACO	BIT (mm)	COMPR (m)	PESO (kg)
60B	5	16	2
50A	6,3	504	124
50A	8	3993	1577
50A	10	348	215
50A	16	171	270
50A	20	45	112
Peso Total	60B =		2 kg
Peso Total	50A =		2297 kg

CONCRETO : FCK = 30 MPa			
15			
09			
08			
07			
06			
05			
04			
03			
02			
01			
00			

REV	MODIFICACÃO	DATA:	REV
-----	-------------	-------	-----

SETOR:	SAMAMBAIA		
ENDEREÇO:	OS 425 - AE 02 SAMAMBAIA SUL - DF		
PROPRIETÁRIO:	SECRETARIA DE EDUCAÇÃO DO DISTRITO FEDERAL		
AUTOR DO PROJETO:	PEDRO LUIZ BERNARDES JÚNIOR	ART: 07201800453	
RESP. TÉCNICO:			


PROPRIETÁRIO

AUTOR DO PROJETO: PEDRO LUIZ BERNARDES JUNIOR

CREA: 23886/0-DF

RESP. TÉCNICO

RA	OUTROS
----	--------

 NOVACAP <small>SA DE OBRAS DE</small> PROJ-DE-026-18	<small>TÍTULO DO PROJETO:</small> PROJETO EXECUTIVO DE ESTRUTURAS			STF 085 REV.00
	<small>NOME DO PROJETO:</small> RECONSTRUÇÃO DA ESCOLA CLASSE 425 SAMAMBAIA			
	<small>PROPOSTA:</small> ARMADAÇÃO DO RES. SUPERIOR			
	<small>DATA DE EMISSÃO:</small> 12/09/2018	<small>ESCALA:</small> 1:50	<small>NOME ELETRÔNICO DO ARQUIVO:</small> PROJ-DE-026-18-STF-PF-085-RFS-ARM-R00	

STF
085
REV.00