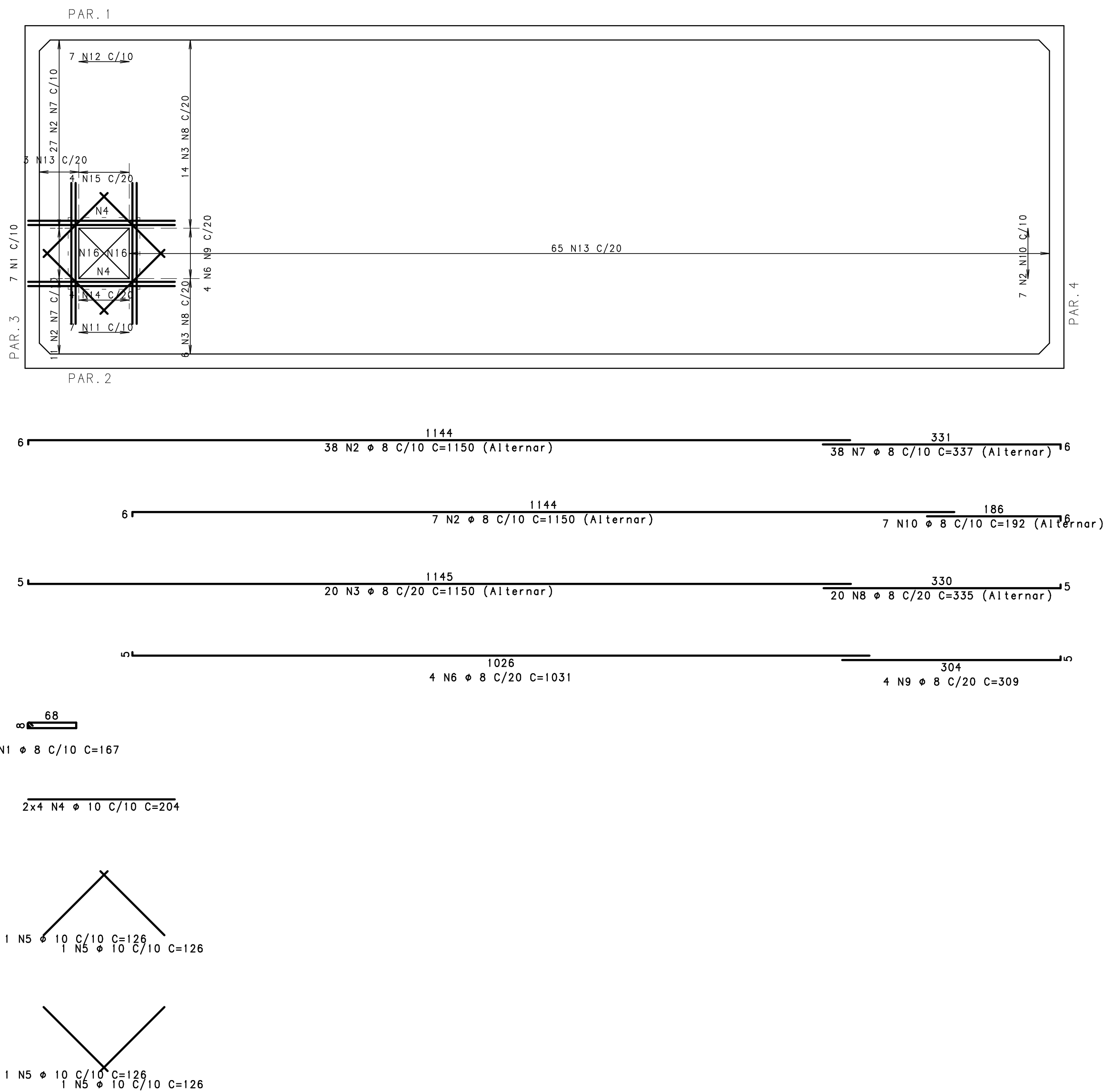


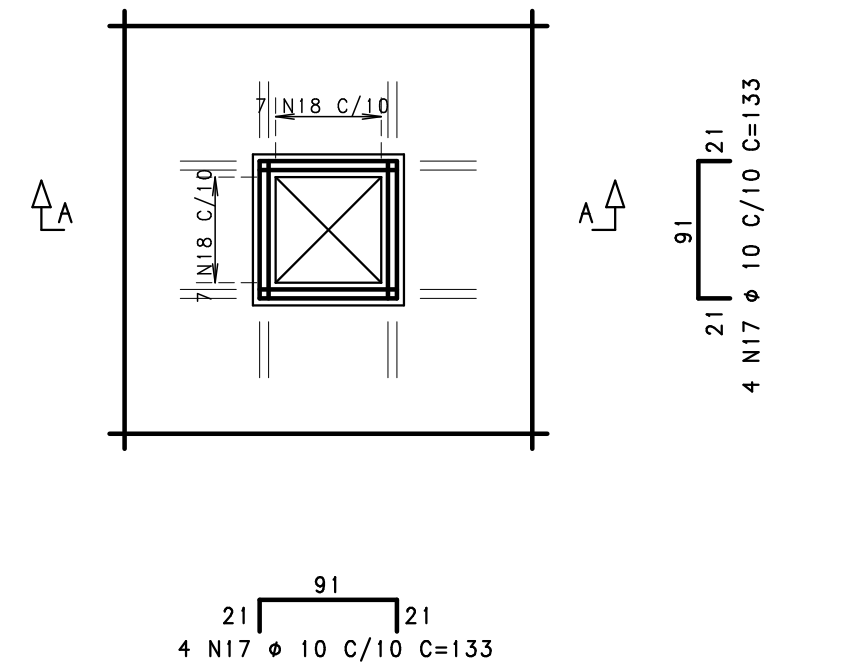
ARMAÇÃO DA TAMPA DO RES. INFERIOR

ESCALA: 1/50

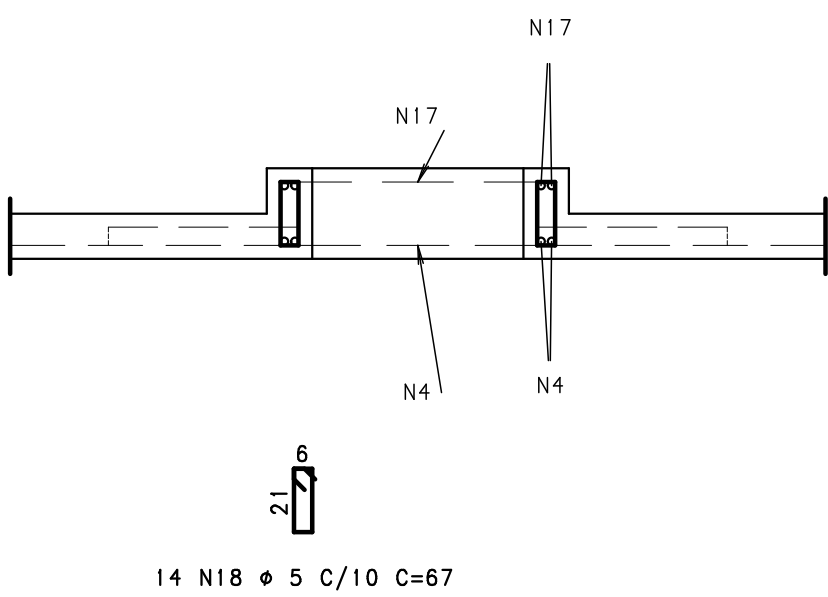
(LAJE h=15cm)



DETALHE DA BORDA DA ABERTURA (1X)

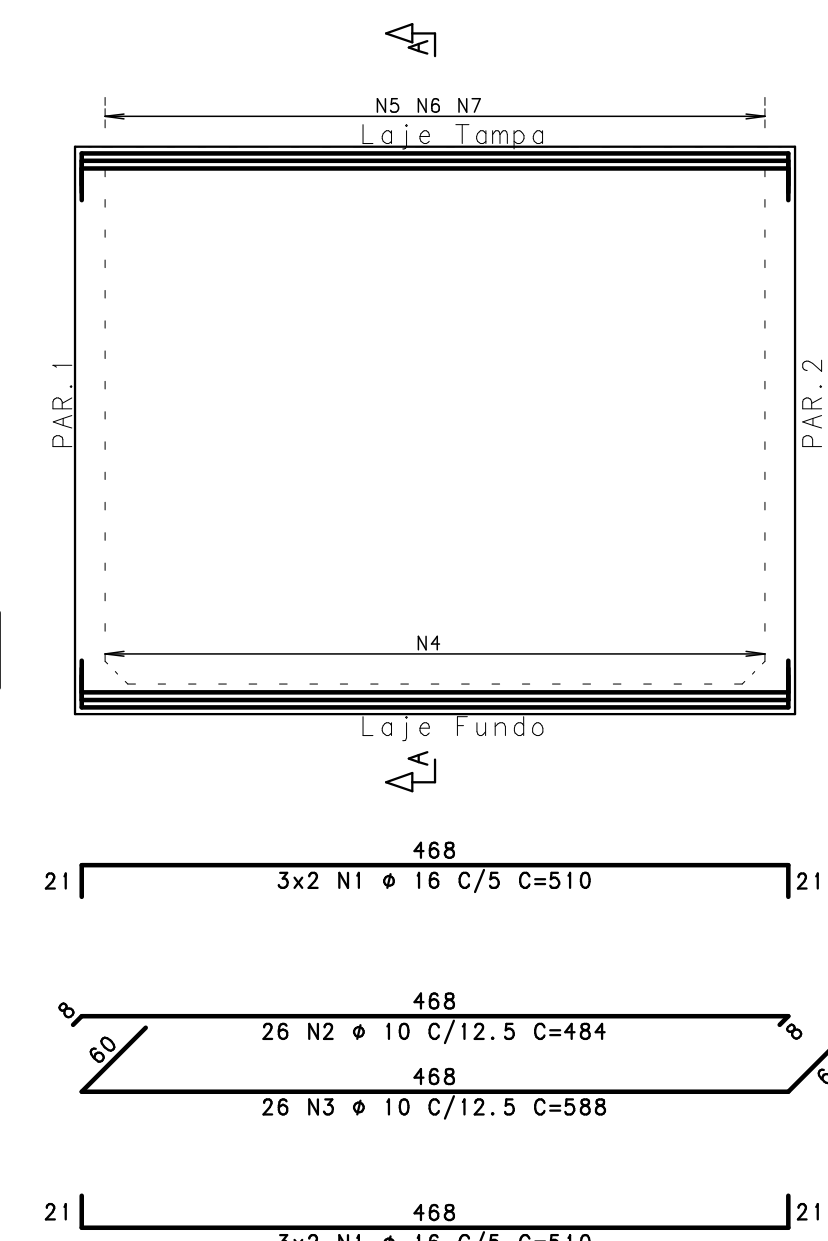


Corte A

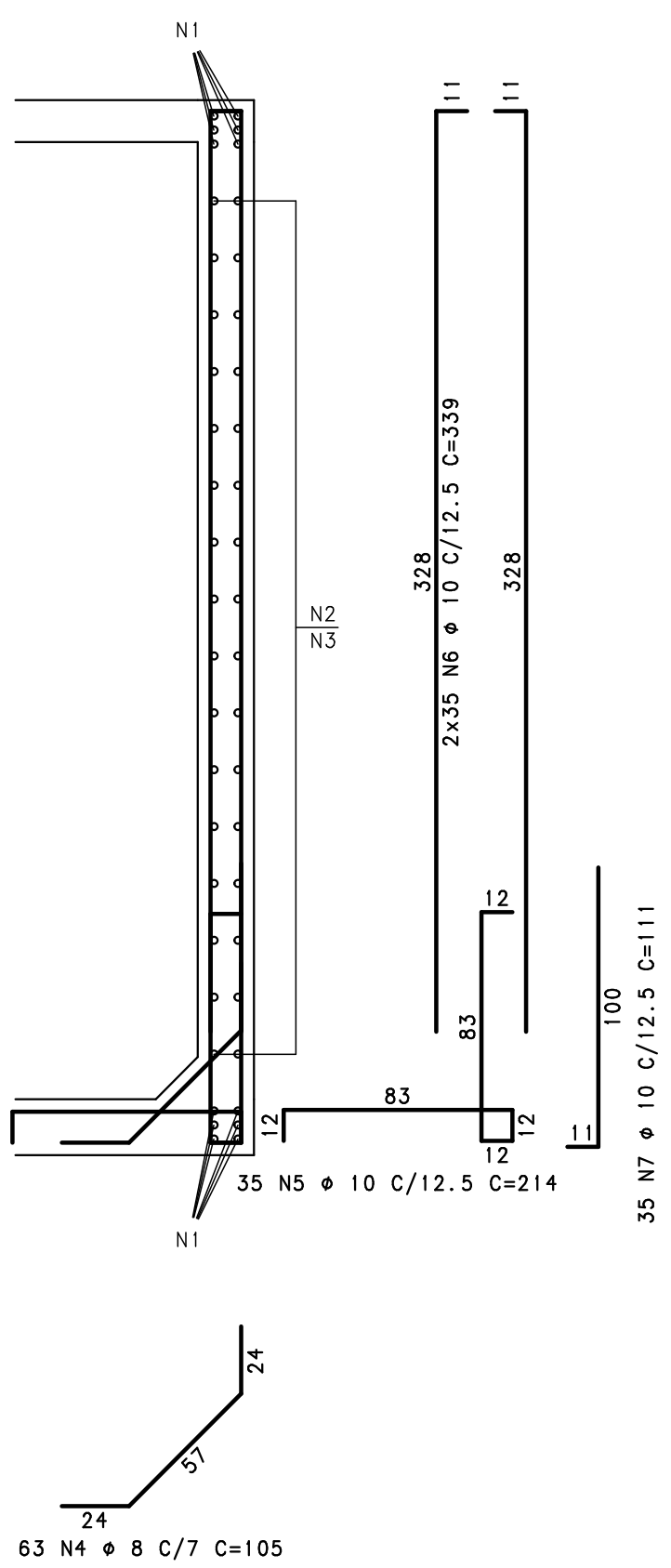


PAR. 3=PAR. 4

2X 20/376



Corte A



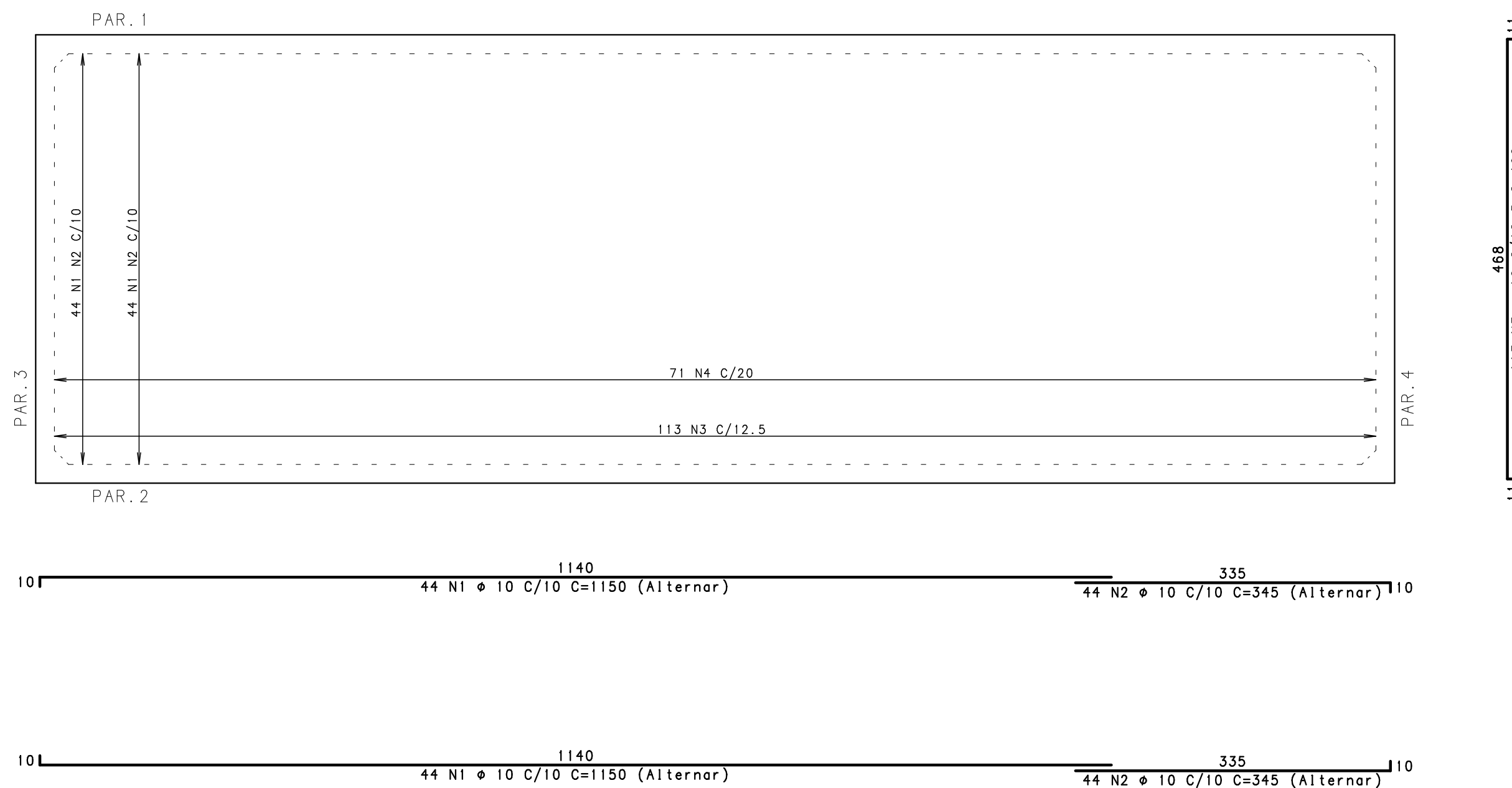
ACO	POS	BIT (mm)	QUANT	COMPRIMENTO (cm)	TOTAL (cm)
ARMAÇÃO DO FUNDO DO RES. INFERIOR					
50A	1	10	88	1150	101200
50A	2	10	88	345	30360
50A	3	10	113	490	55370
50A	4	10	71	490	34790
PAR. 1=PAR. 2 (X2)					
50A	1	16	24	1150	27600
50A	2	10	50	1150	57500
50A	3	10	50	1150	57500
50A	4	10	50	467	23350
50A	5	16	24	405	9720
50A	6	10	50	363	18150
50A	7	12.5	214	133	28462
50A	8	10	226	214	48364
50A	9	10	452	339	152228
50A	10	10	226	111	25086
50A	11	10	24	328	7872
50A	12	10	24	95	2280
PAR. 3=PAR. 4 (X2)					
50A	1	16	24	510	12240
50A	2	10	52	484	25168
50A	3	10	52	588	30576
50A	4	8	126	105	13230
50A	5	10	70	214	14980
50A	6	10	140	339	47460
50A	7	10	70	111	7770
ARMAÇÃO DA TAMPA DO RES. INFERIOR					
50A	1	8	7	187	1309
50A	2	8	45	1150	51750
50A	3	8	20	1150	23000
50A	4	10	8	204	1632
50A	5	10	4	126	504
50A	6	8	4	1031	4124
50A	7	8	38	337	12806
50A	8	8	20	335	6700
50A	9	8	4	309	1236
50A	10	8	7	192	1344
50A	11	10	7	128	896
50A	12	10	7	285	1995
50A	13	8	66	480	31680
50A	14	8	4	129	516
50A	15	8	4	286	1144
50A	16	10	8	196	1568
50A	17	10	6	133	858
60B	18	5	14	67	938

RESUMO AÇO CA 50-60			
ACO	BIT (mm)	COMPR (m)	PESO (kg)
60B	5	9	1
50A	8	1497	301
50A	10	7487	4619
50A	12.5	285	274
50A	16	496	782
Peso Total			60B = 1 kg
Peso Total			50A = 6267 kg

ARMAÇÃO DO FUNDO DO RES. INFERIOR

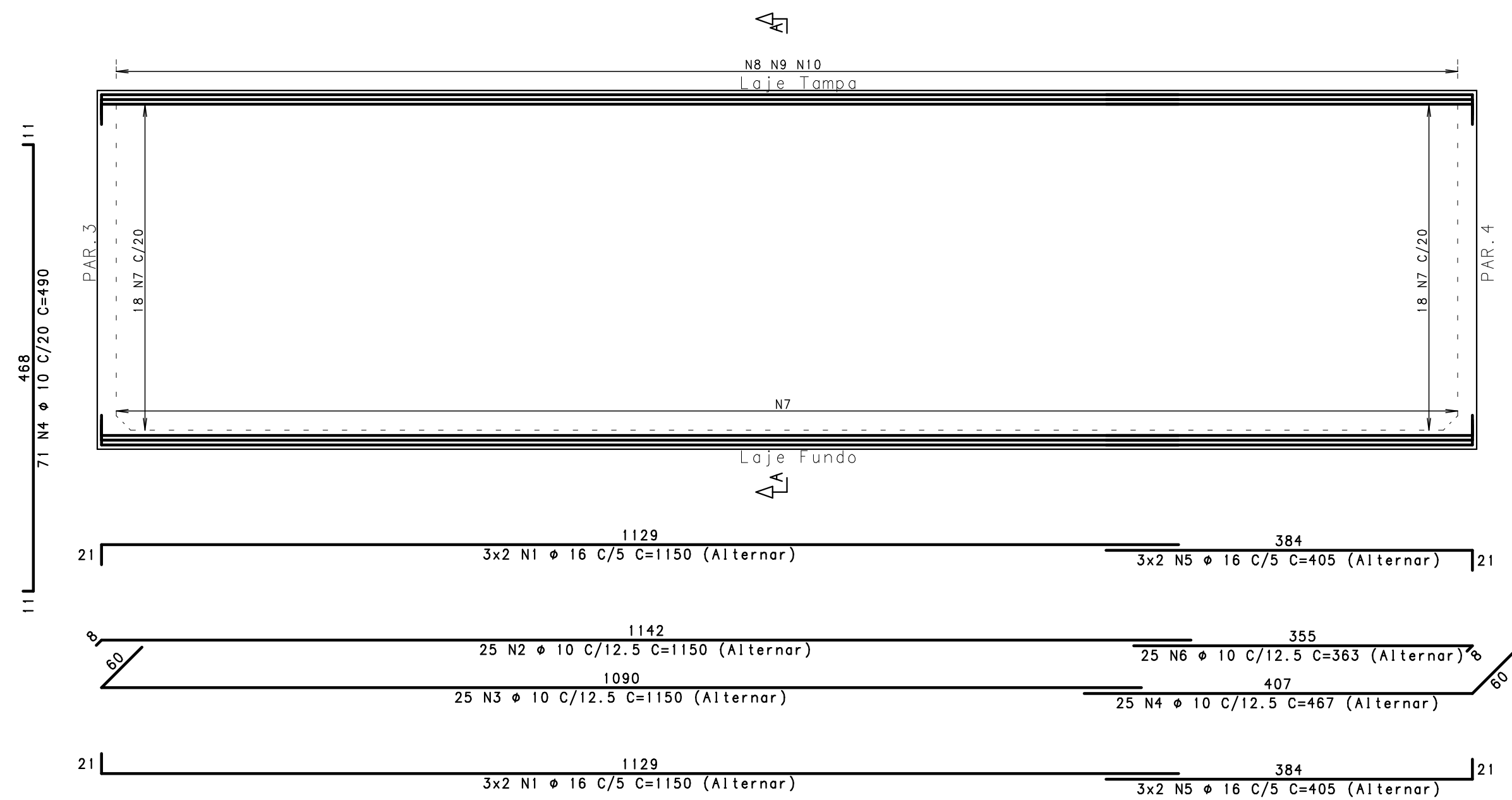
ESCALA: 1/50

(LAJE h=20cm)

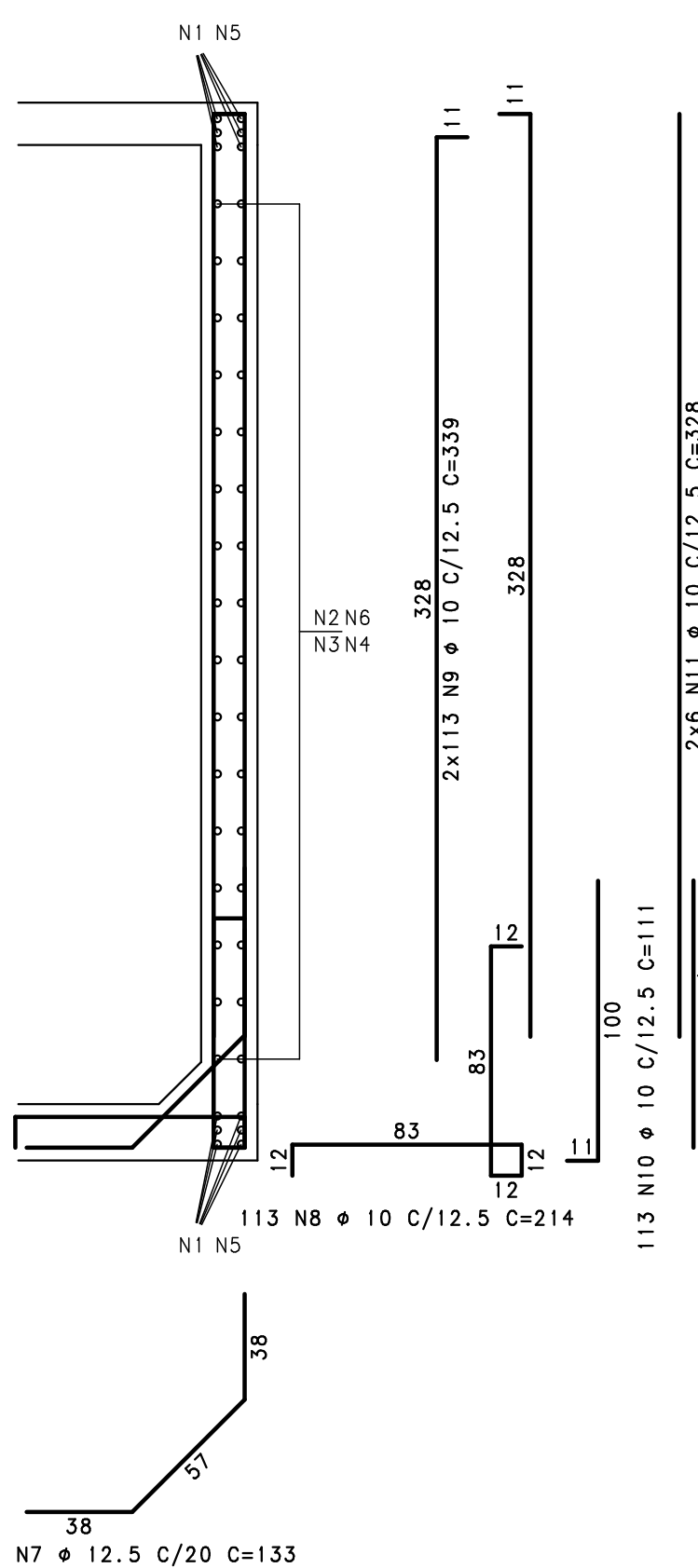


PAR. 1=PAR. 2

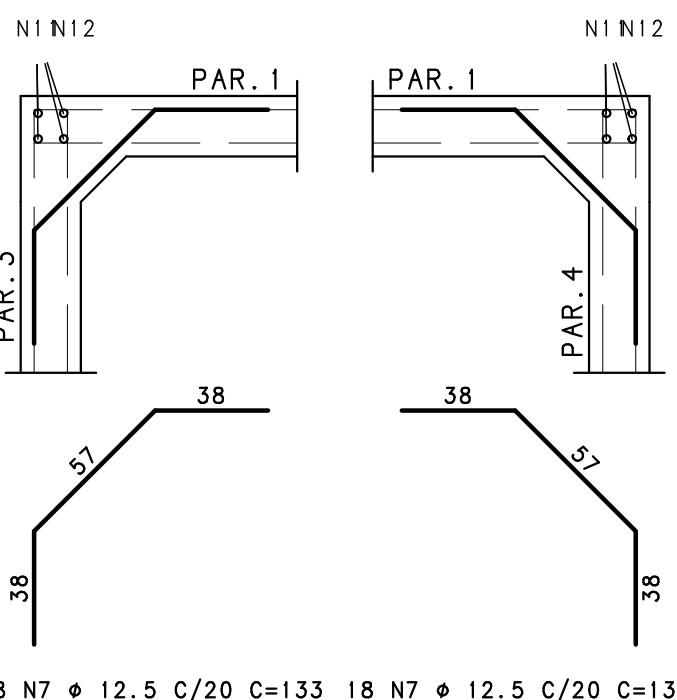
2X 20/376



Corte A



ARM. DAS MÍSLAS VERTICAIS (Planta)



CONCRETO : FCK = 30 MPa

10		
09		
08		
07		
06		
05		
04		
03		
02		
01		
00		

REV. MODIFICAÇÃO DATA: RESP.

SETOR: SAMAMBAIA
ENDEREÇO: QS 425 - AE 02 SAMAMBAIA SUL - DF
PROPRIETÁRIO: SECRETARIA DE EDUCAÇÃO DO DISTRITO FEDERAL
AUTOR DO PROJETO: PEDRO LUIZ BERNARDES JÚNIOR ART: 0720180045323
RESP. TÉCNICO:

PROPRIETÁRIO
AUTOR DO PROJETO: PEDRO LUIZ BERNARDES JÚNIOR CREA: 23886/D-DF
RESP. TÉCNICO

RA
OUTROS
RA