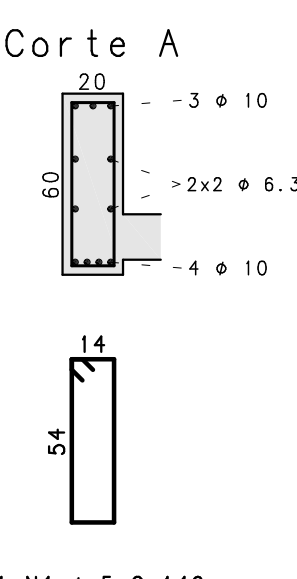
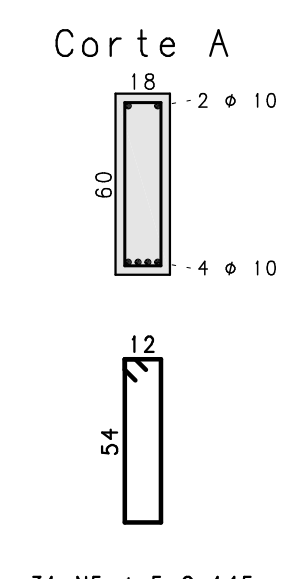
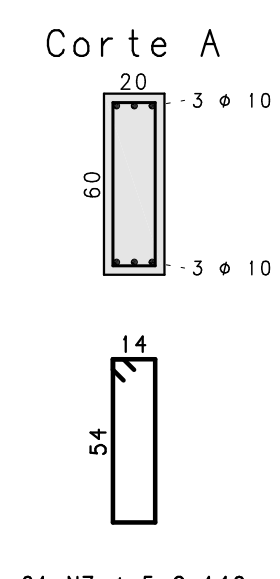
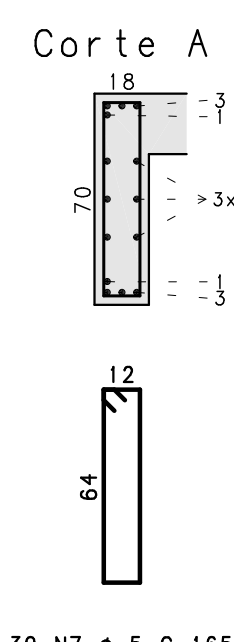
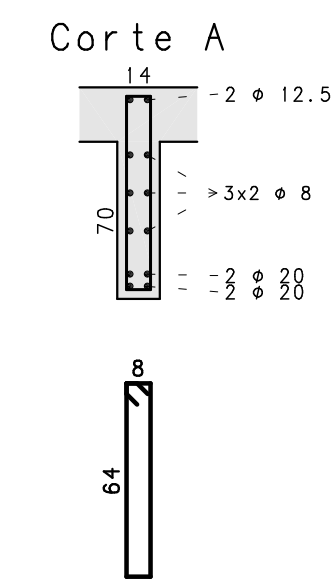
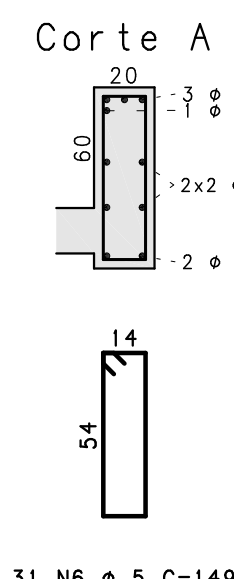
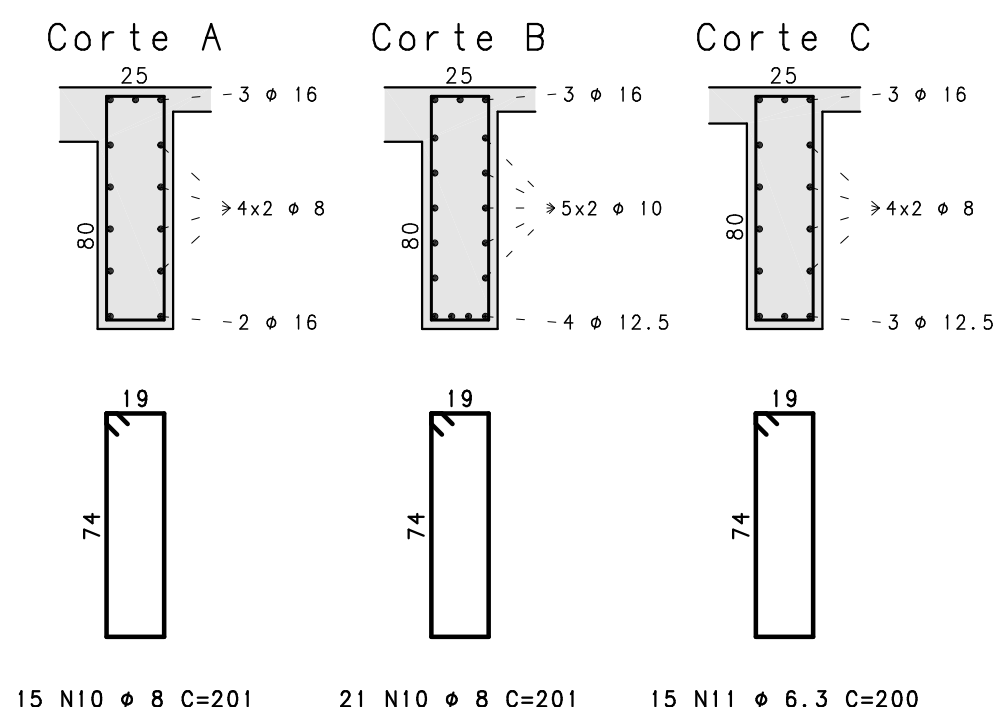
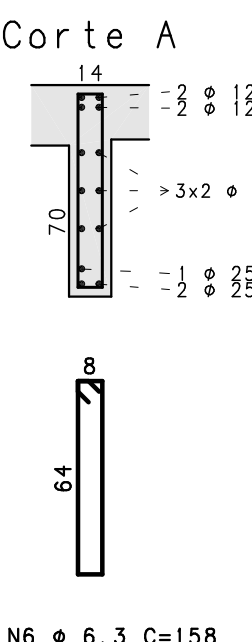
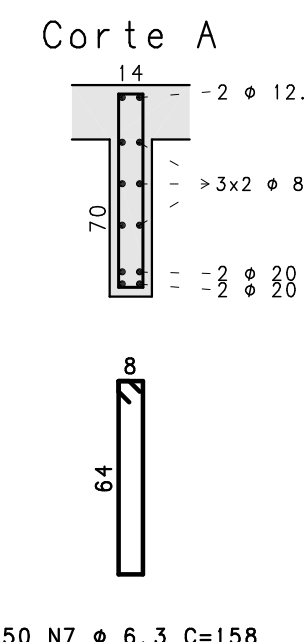
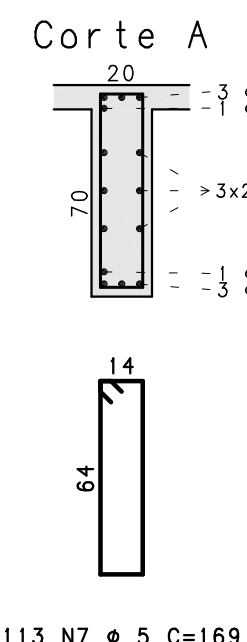


RESUMO AÇO CA 50-60				
AÇO	BIT (mm)	COMPR (m)	PESO (kg)	
60B		344	115	
50A	6,3	563	138	
50A	8	898	355	
50A	10	309	191	
50A	12,5	165	159	
50A	16	154	243	
50A	20	226	558	
50A	25	21	81	
Peso Total	60B =		115	kg
Peso Total	50A =		1725	kg



PROPRIETARIO

*Assinatura*

AUTOR DO PROJETO: PEDRO LUIZ BERNARDES JUNIOR

CREA: 23886/D-Df

RESP. TÉCNICO

	RA
--	----

STR  
049  
REV.00