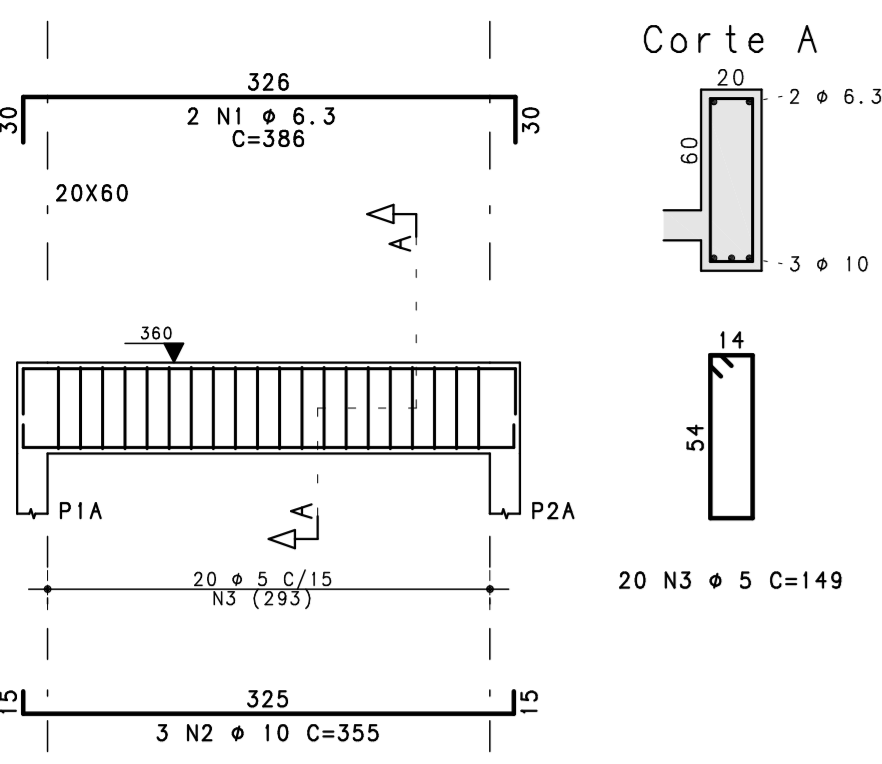
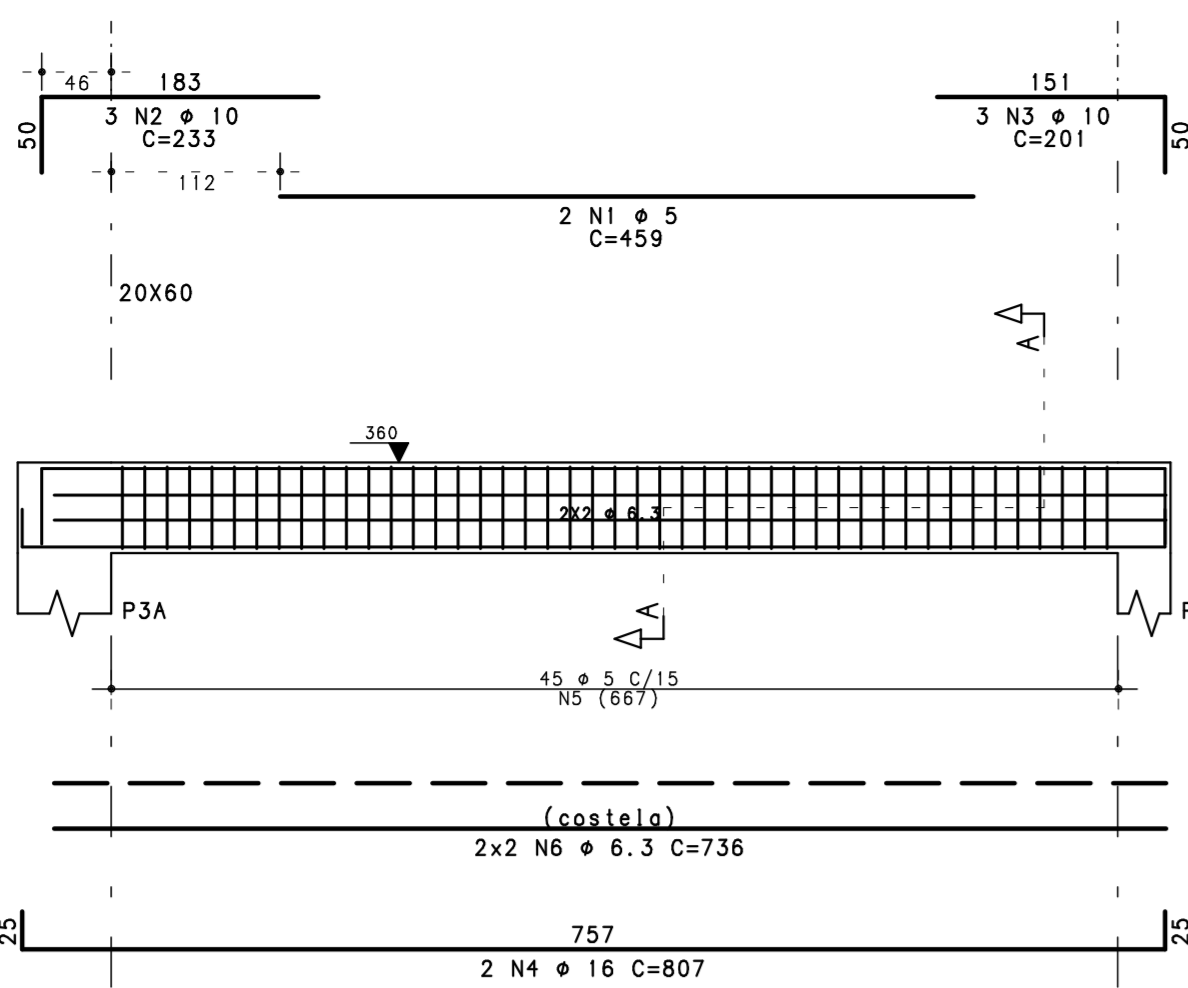


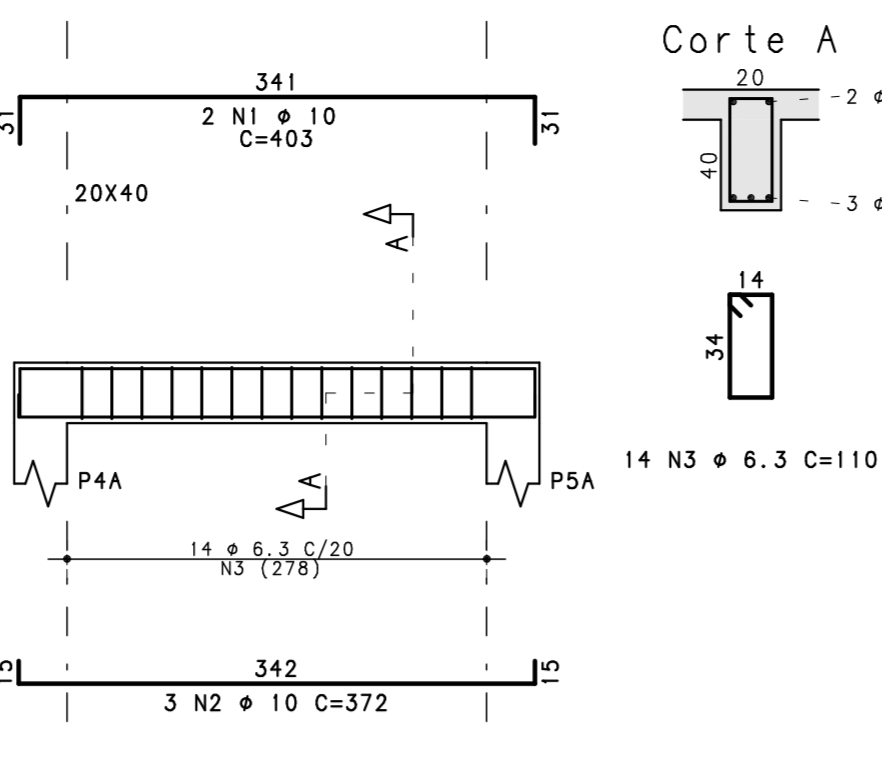
VA401



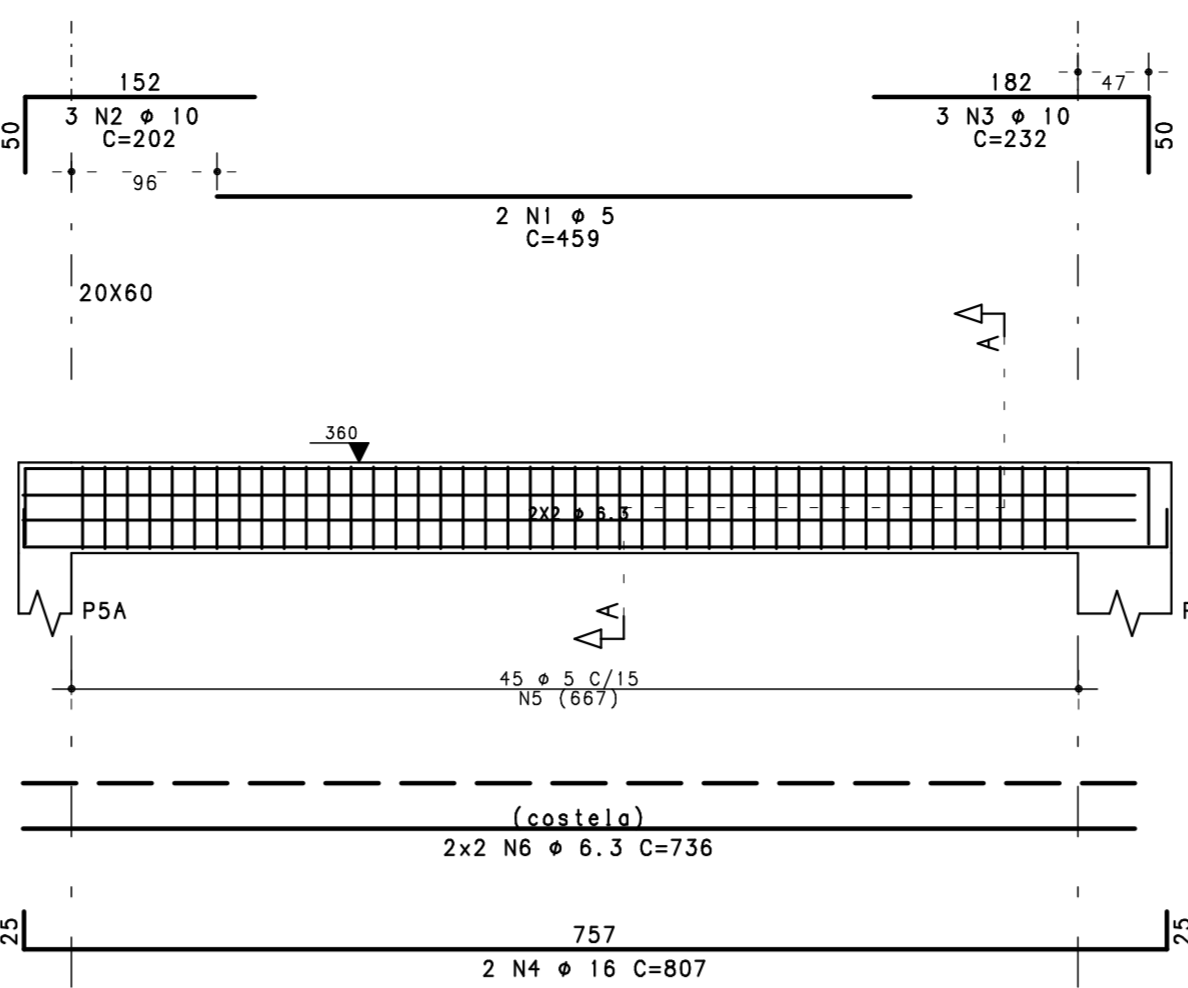
VA402



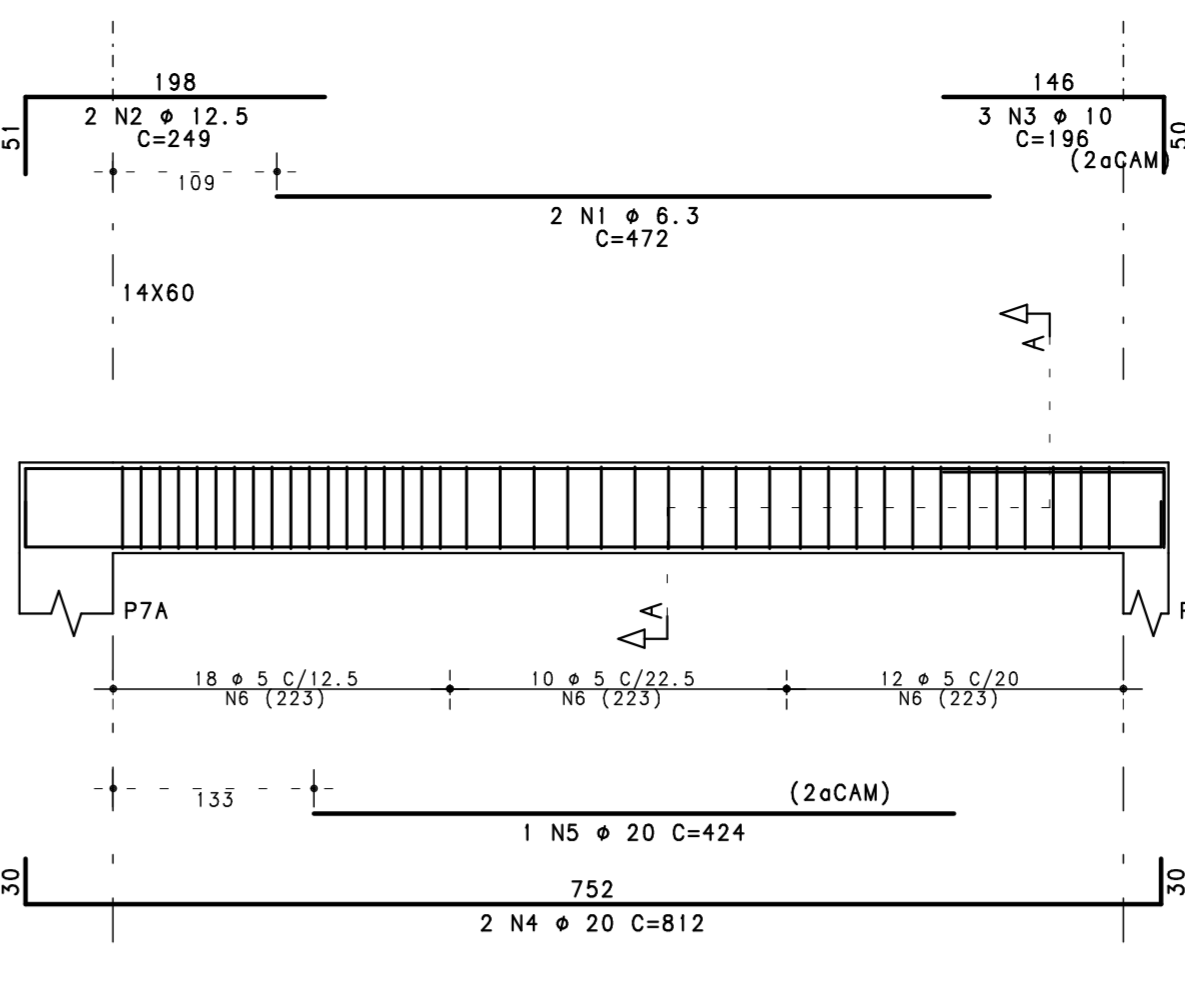
VA403



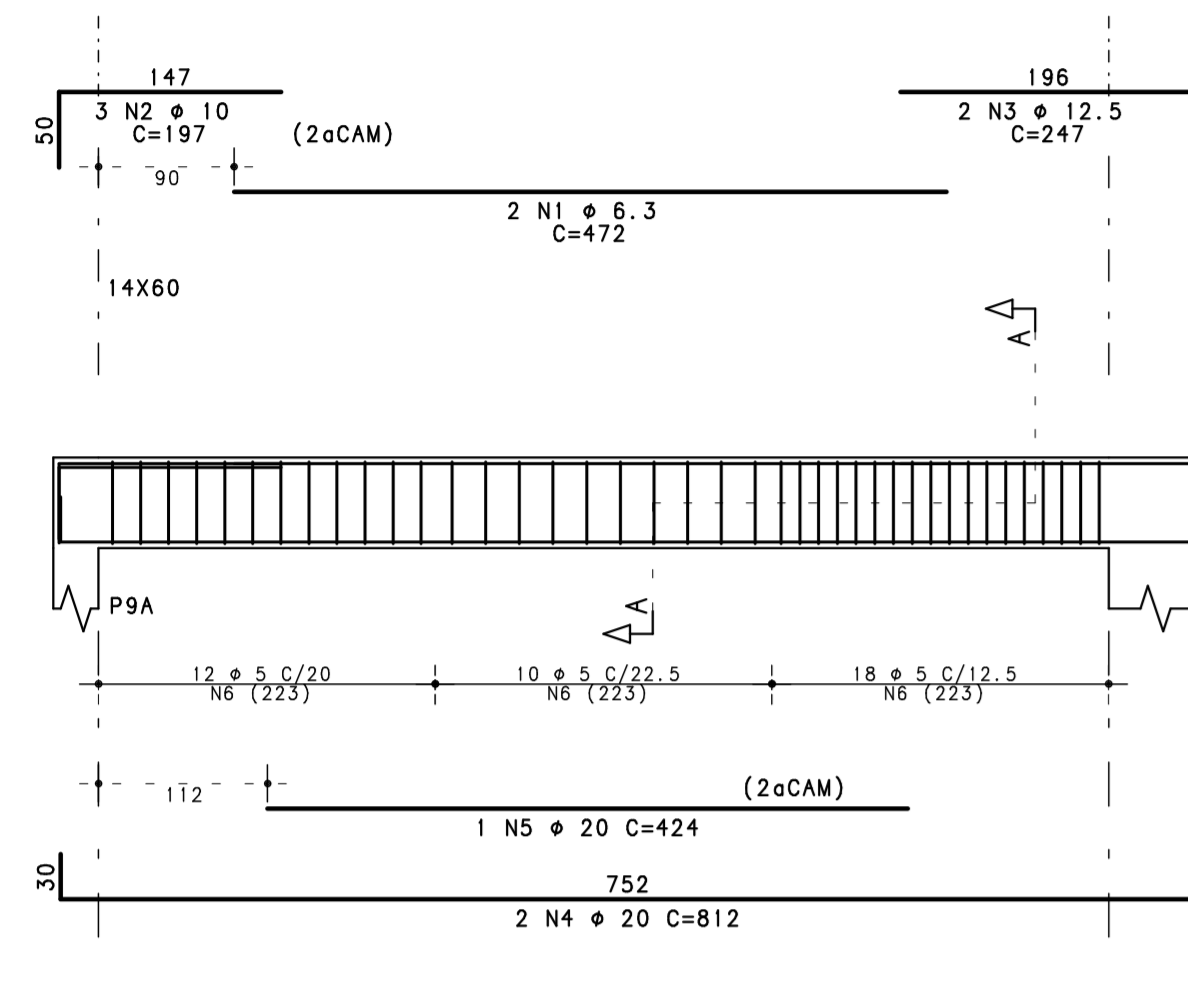
VA404



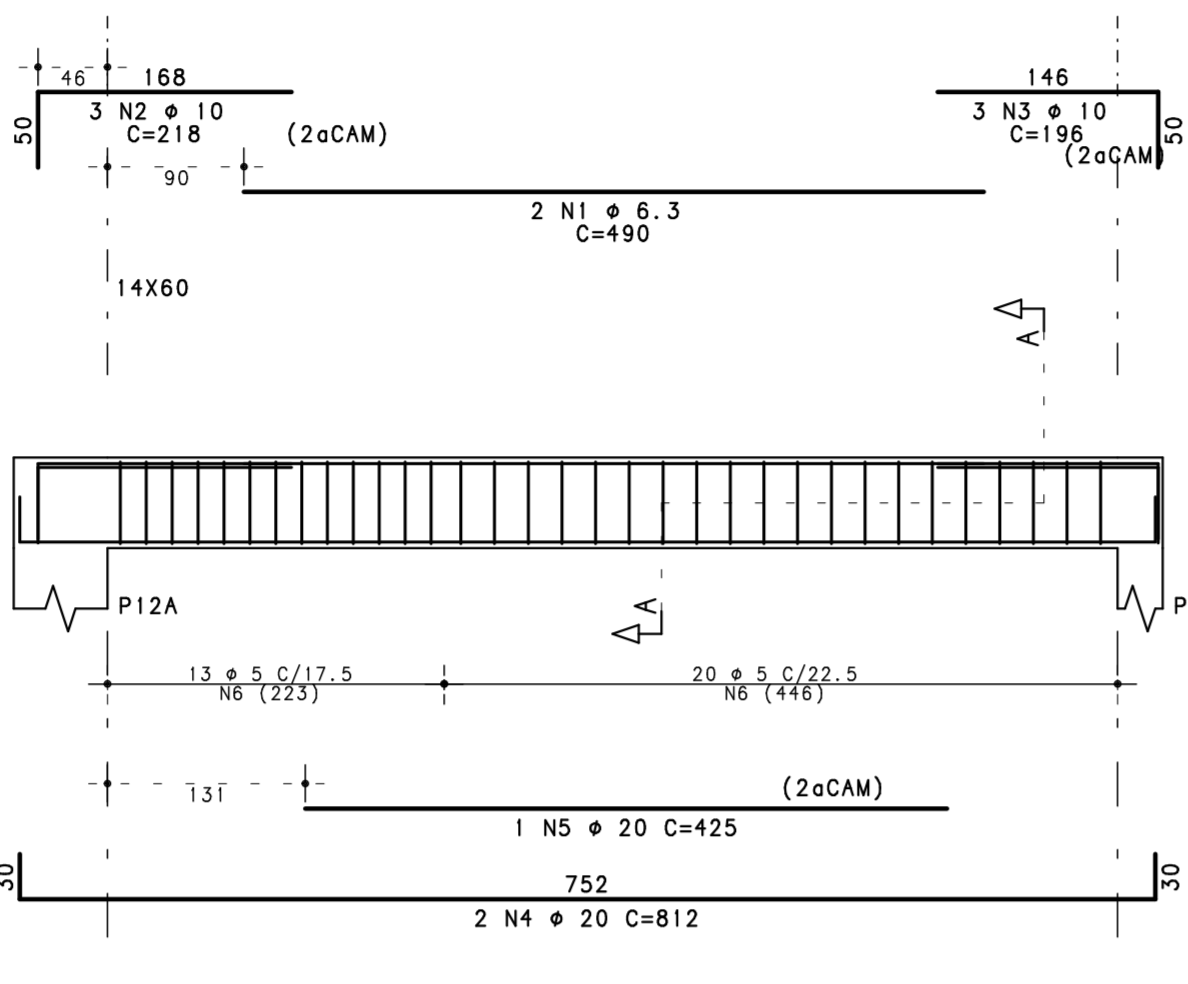
VA405



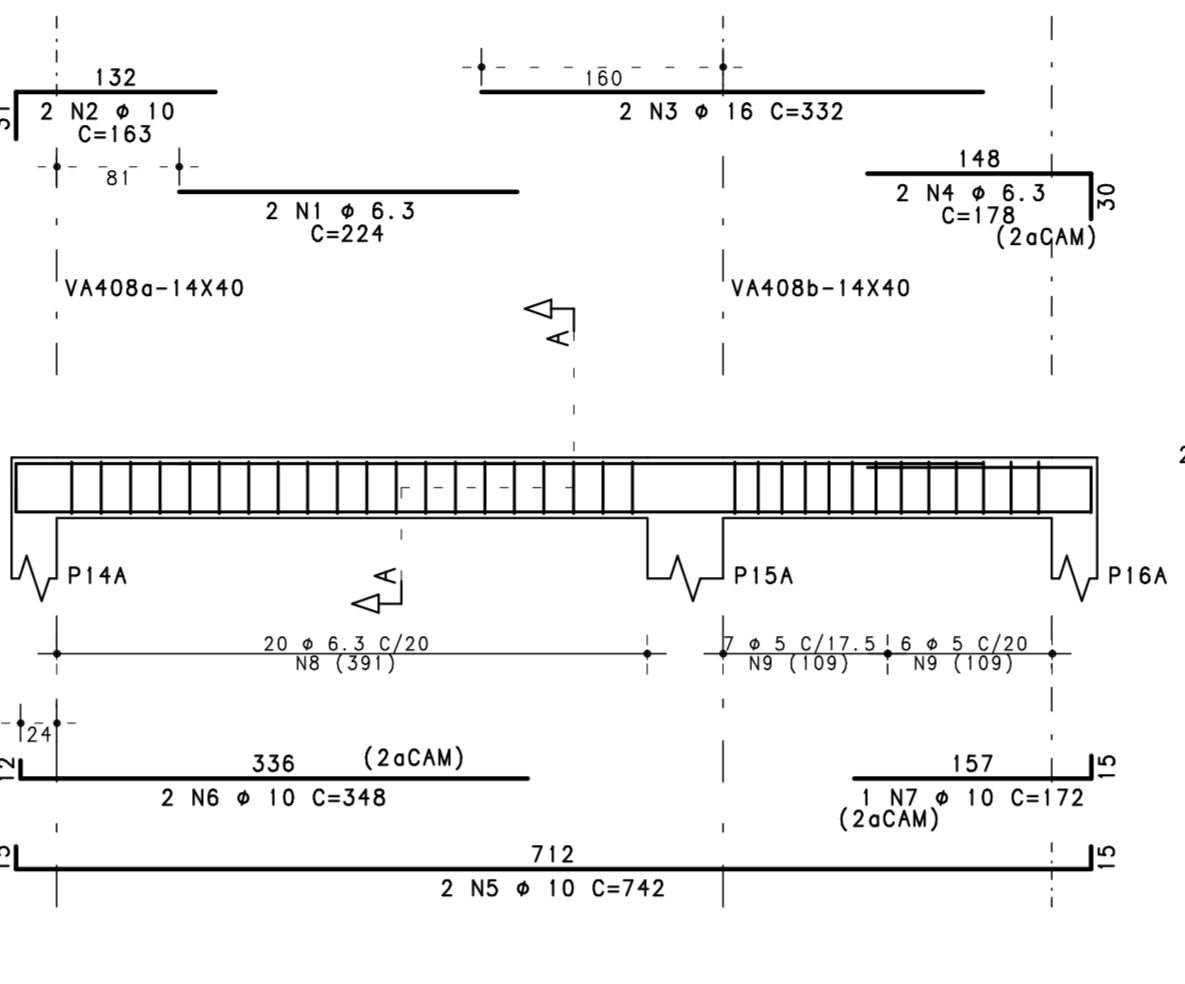
VA406



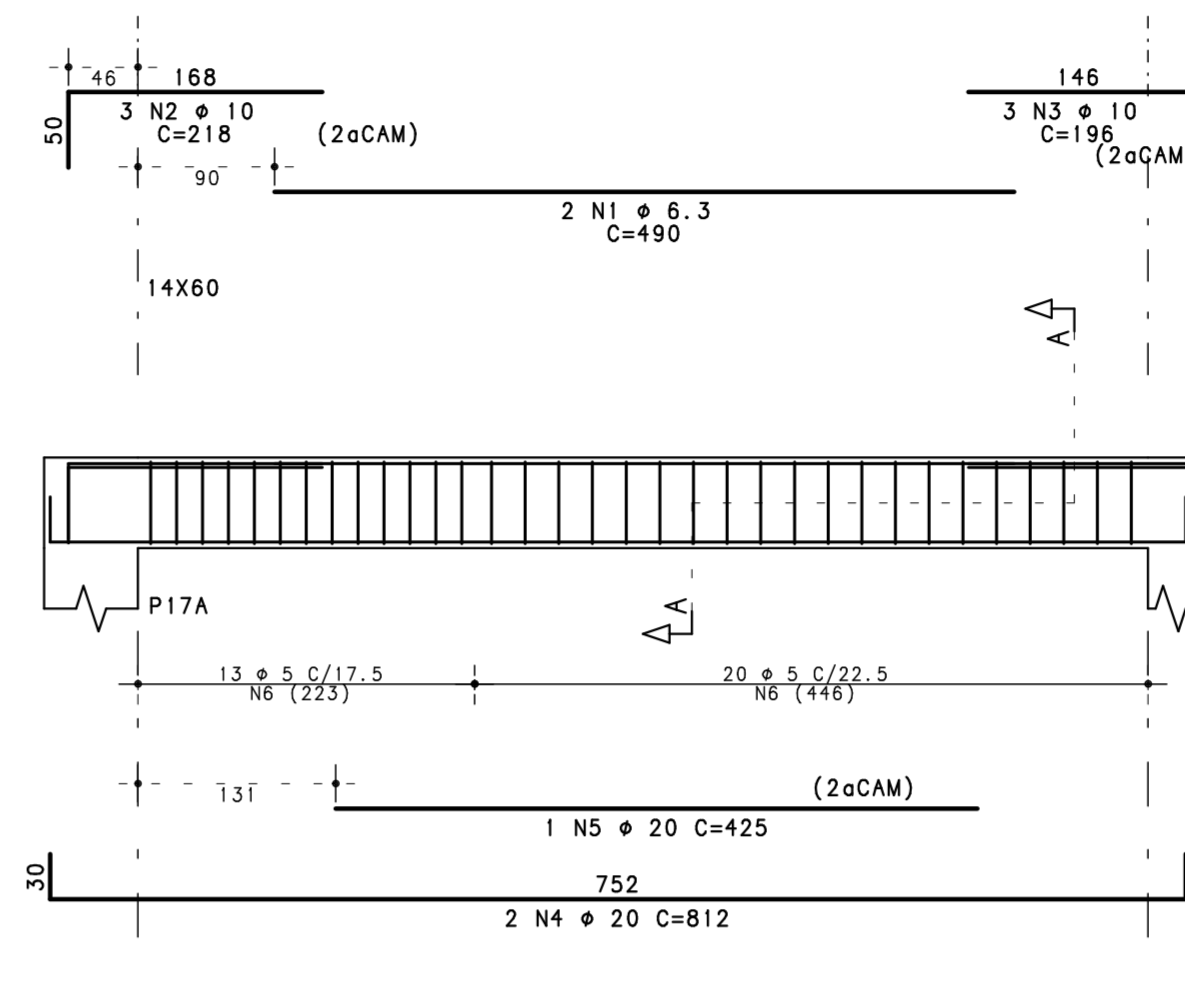
VA407



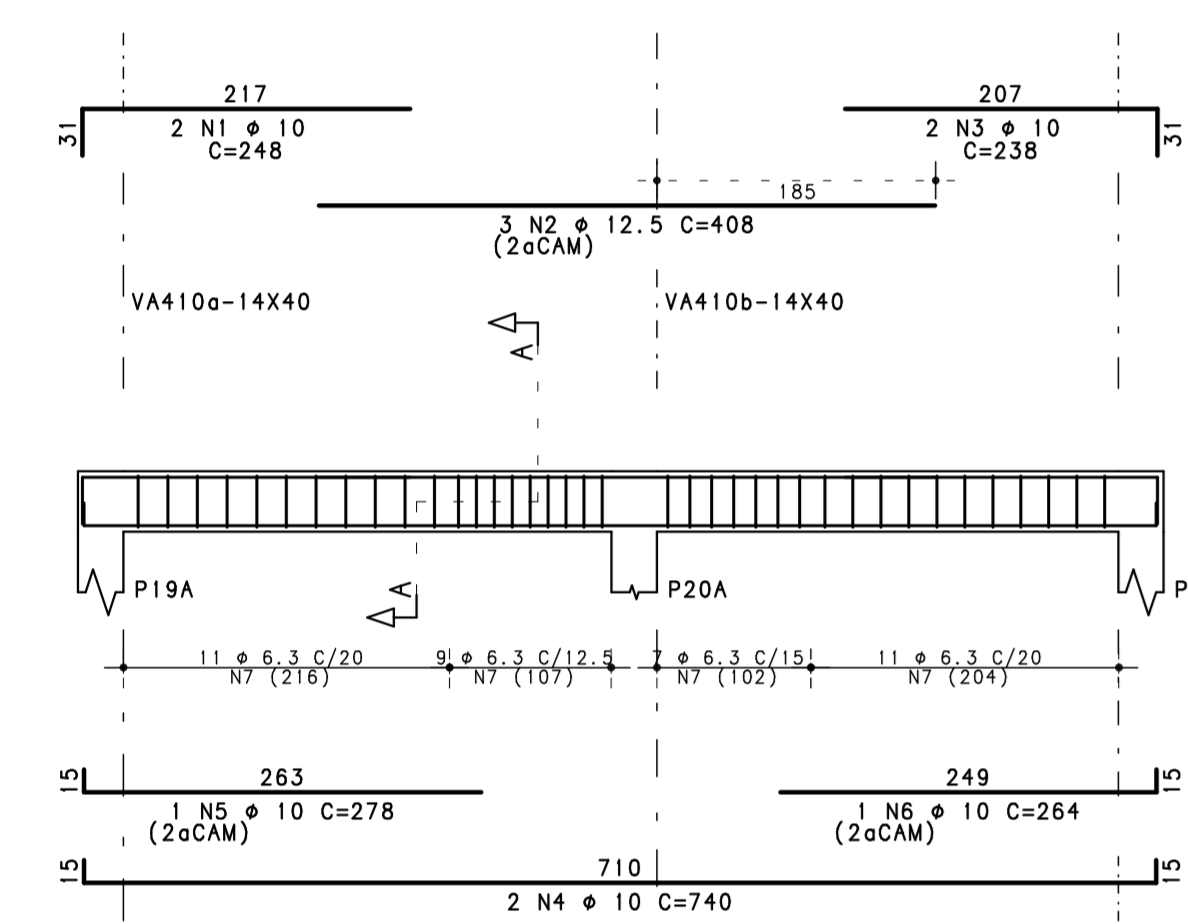
VA408



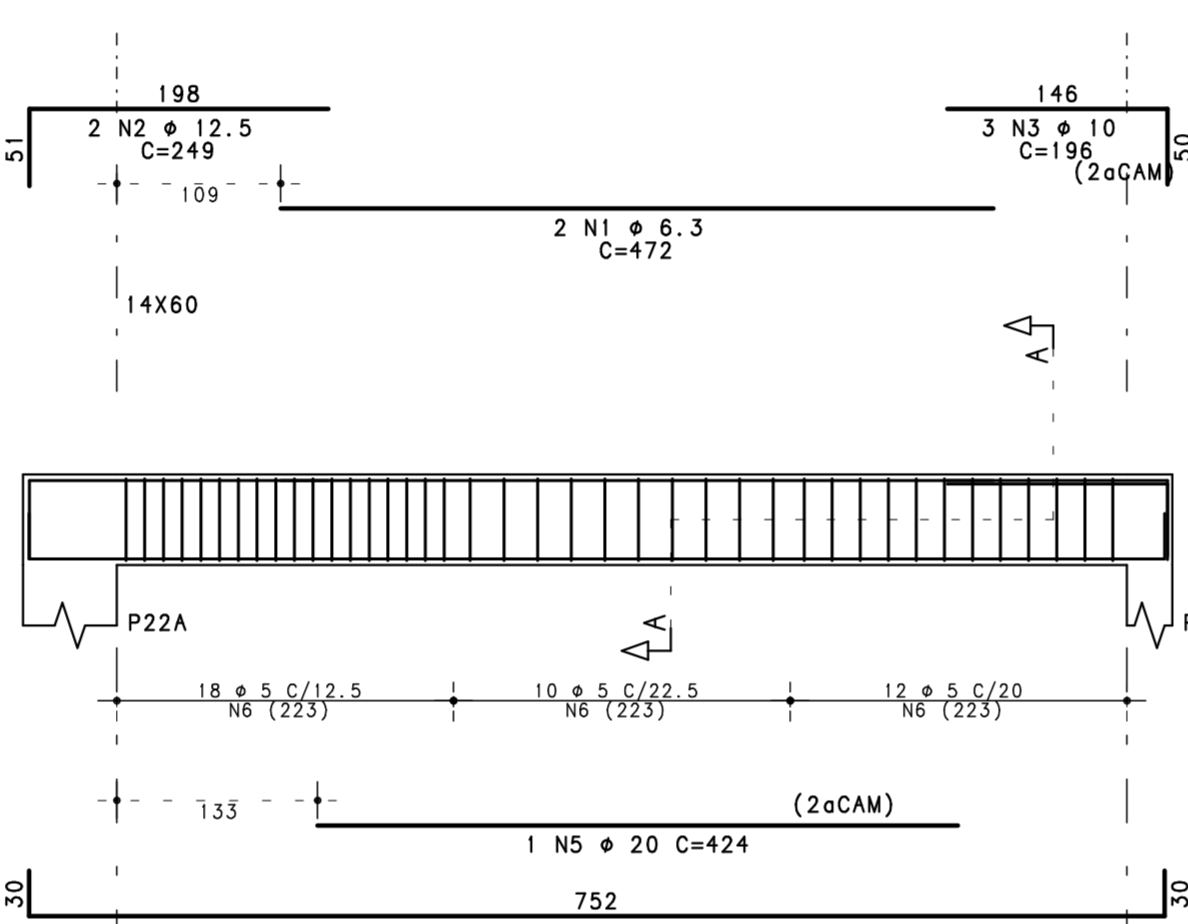
VA409



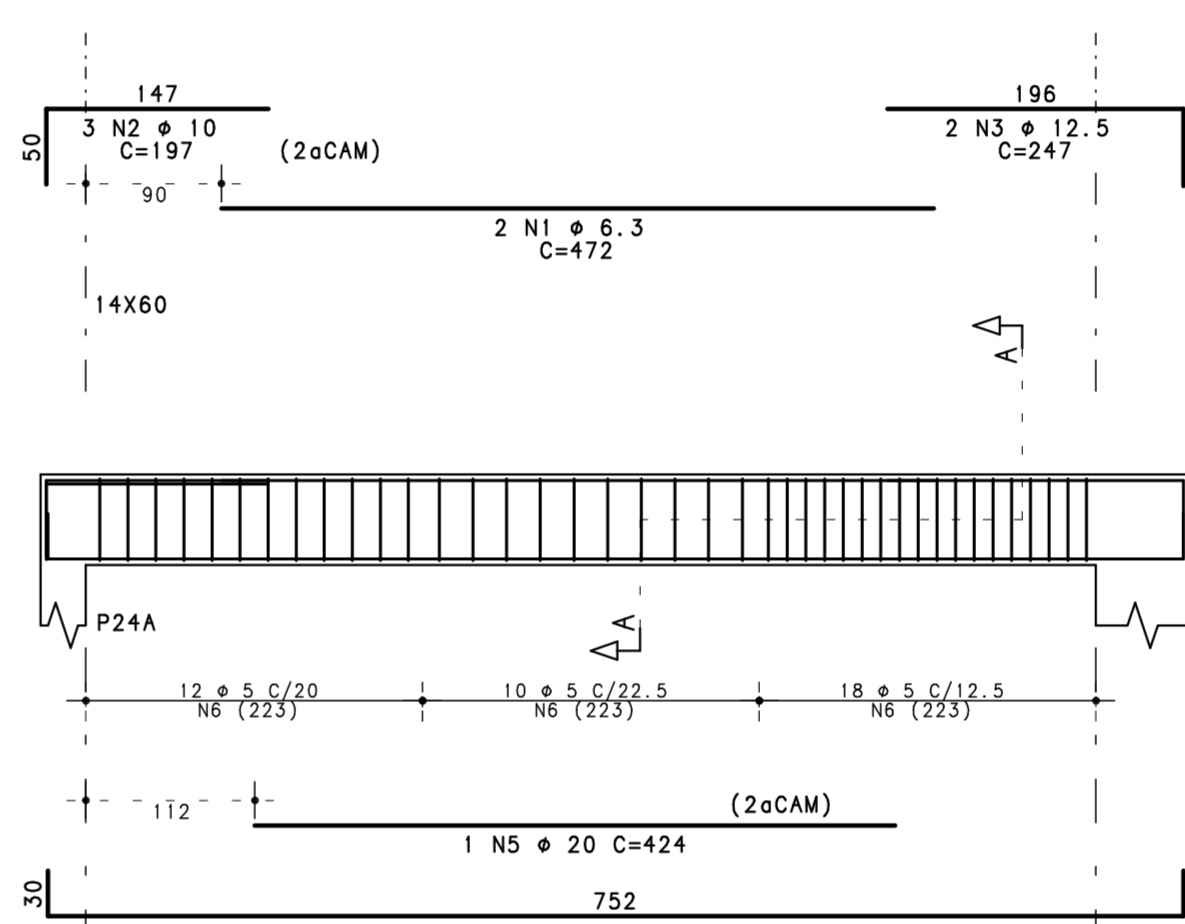
VA410



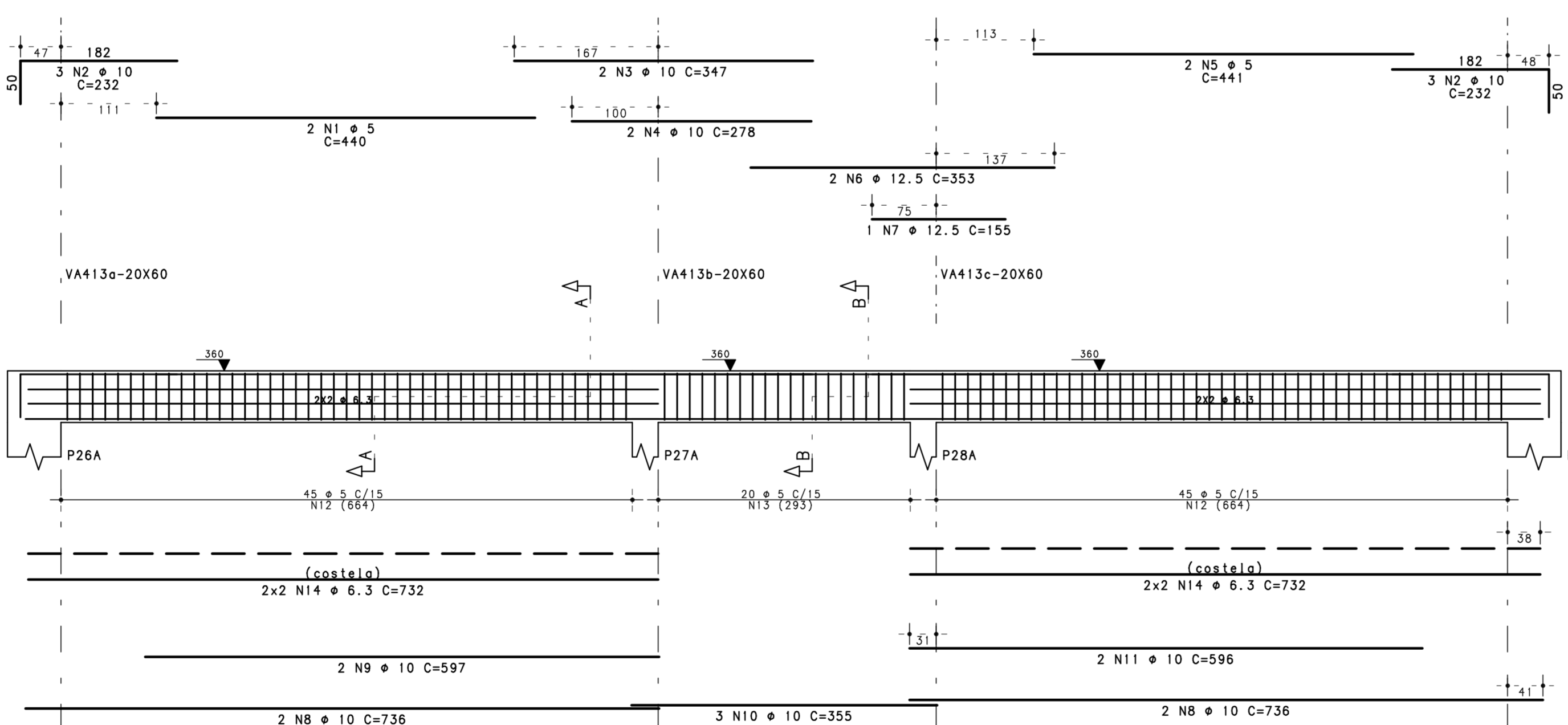
VA411



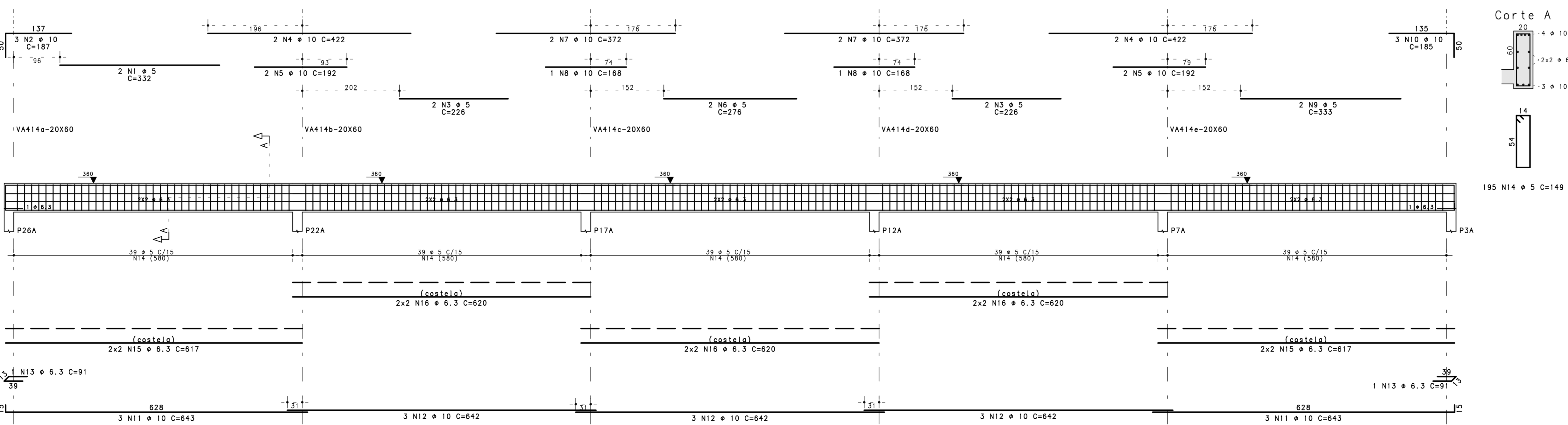
VA412



VA413



VA414



ACO	POS	BIT (mm)	QUANT	COMPRIMENTO (cm)	UNIT	TOTAL
VA401	50A	1	6.3	2	366	772
	50A	2	10	3	355	1065
	60B	3	5	20	149	2980
VA402	60B	1	5	2	459	918
	50A	2	10	3	253	699
	50A	3	10	3	201	603
	50A	4	16	2	807	1614
	60B	5	5	45	127	6705
	50A	6	6.3	4	736	2944
VA403	50A	1	10	2	403	806
	50A	2	10	3	372	1116
	50A	3	16.3	1	110	1540
VA404	60B	1	5	2	459	918
	50A	2	10	3	202	606
	50A	3	10	3	196	588
	50A	4	16	2	807	1614
	60B	5	5	45	149	6705
	60B	6	6.3	4	736	2944
VA405	50A	1	6.3	2	472	944
	50A	2	12.5	2	249	498
	50A	3	12.5	3	197	591
	50A	4	20	2	812	1624
	50A	5	20	1	424	424
	60B	6	5	40	137	5480
VA406	50A	1	6.3	2	472	944
	50A	2	10	3	197	591
	50A	3	12.5	2	247	494
	50A	4	20	2	812	1624
	50A	5	20	1	424	424
	60B	6	5	40	137	5480
VA407	50A	1	6.3	2	472	944
	50A	2	10	3	218	654
	50A	3	10	3	196	588
	50A	4	20	2	812	1624
	50A	5	20	1	425	425
	60B	6	5	35	137	4821
VA408	50A	1	6.3	2	472	944
	50A	2	10	2	163	326
	50A	3	10	2	332	664
	50A	4	6.3	2	178	356
	50A	5	10	2	742	1484
	50A	6	10	2	945	1890
	50A	7	10	2	172	344
	50A	8	6.3	20	88	1840
	60B	9	5	13	97	1261
VA409	50A	1	6.3	2	472	944
	50A	2	10	2	163	326
	50A	3	10	2	332	664
	50A	4	6.3	2	178	356
	50A	5	10	2	742	1484
	50A	6	10	2	945	1890
	50A	7	10	2	172	344
	50A	8	6.3	20	88	1840
	60B	9	5	13	97	1261
VA410	50A	1	6.3	2	472	944
	50A	2	10	2	163	326
	50A	3	10	2	332	664
	50A	4	6.3	2	178	356
	50A	5	10	2	742	1484
	50A	6	10	2	945	1890
	50A	7	10	2	172	344
	50A	8	6.3	20	88	1840
	60B	9	5	13	97	1261
VA411	50A	1	6.3	2	472	944
	50A	2	10	2	163	326
	50A	3	10	2	332	664
	50A	4	6.3	2	178	356
	50A	5	10	2	742	1484
	50A	6	10	2	945	1890
	50A	7	10	2	172	344
	50A	8	6.3	20	88	1840
	60B	9	5	13	97	1261
VA412	50A	1	6.3	2	472	944
	50A	2	10	2	163	326
	50A	3	10	2	332	664
	50A	4	6.3	2	178	356
	50A	5	10	2	742	1484
	50A	6	10	2	945	1890
	50A	7	10	2	172	344
	50A	8	6.3	20	88	1840
	60B	9	5	13	97	1261
VA413	50A	1	6.3	2	472	944
	50A	2	10	2	163	326
	50A	3	10	2	332	664
	50A	4	6.3	2	178	356
	50A	5	10	2	742	1484
	50A	6	10	2	945	1890
	50A	7	10	2	172	344
	50A	8	6.3	20	88	1840
	60B	9	5	13	97	1261
VA414	50A	1	6.3	2	472	944
	50A	2	10	2	163	326
	50A	3	10	2	332	664
	50A	4	6.3	2	178	356
	50A	5	10	2	742	1484
	50A	6	10	2	945	1890
	50A	7	10	2	172	344
	50A	8	6.3	20	88	1840
	60B	9	5	13	97	1261

ACO	BIT (mm)	COMPR (cm)	PESO (kg)
60B	6.3	004	155
50A	6.3	388	95
50A	10	402	248
50A	12.5	41	39
50A	16	39	803
50A	20	123	803
Peso Total	60B =	155 kg	
Peso Total	50A =	747 kg	

CONCRETO : FCK = 30 MPa

10		
08		
08		
07		
06		
05		
04		
03		
02		
01		
00	EMIÇÃO INICIAL	11/07/2018 PLB4
REV.	MODIFICAÇÃO	DATA: RESP.

SETOR: SAMAMBAIA  
ENDEREÇO: QS 425 - AE 02 SAMAMBAIA SUL - DF  
PROPRIETÁRIO: SECRETARIA DE EDUCAÇÃO DO DISTRITO FEDERAL  
AUTOR DO PROJETO: PEDRO LUIZ BERNARDES JÚNIOR ART: 0720180045323  
RESP. TÉCNICO:

PROPRIETÁRIO  
AUTOR DO PROJETO: PEDRO LUIZ BERNARDES JÚNIOR CREA: 23886/D-DF  
RESP. TÉCNICO

RA  
OUTROS  
RA

PROJETO EXECUTIVO DE ESTRUTURAS  
RECONSTRUÇÃO DA ESCOLA CLASSE 425 SAMAMBAIA  
ARMACÃO DE VIGAS - COB - TRECHO A  
DATA DE EMISSÃO: 11/07/2018 EMISSÃO: 11/07/2018  
PROJ-026-18-STR-PE-023-COB-VIG-000

STR  
023  
REV.00

(FOLHA VÁLIDA APENAS SE PLOTADA OU COPIADA EM CORES)