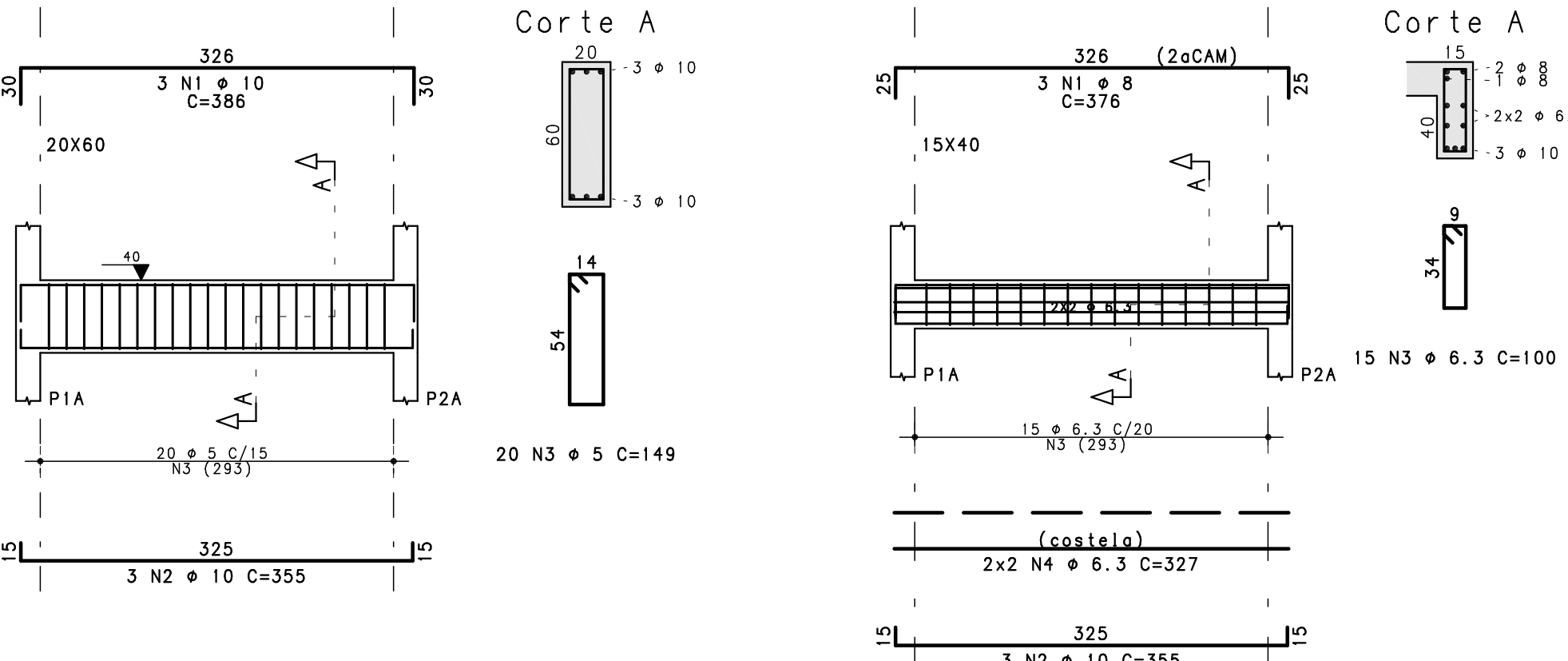
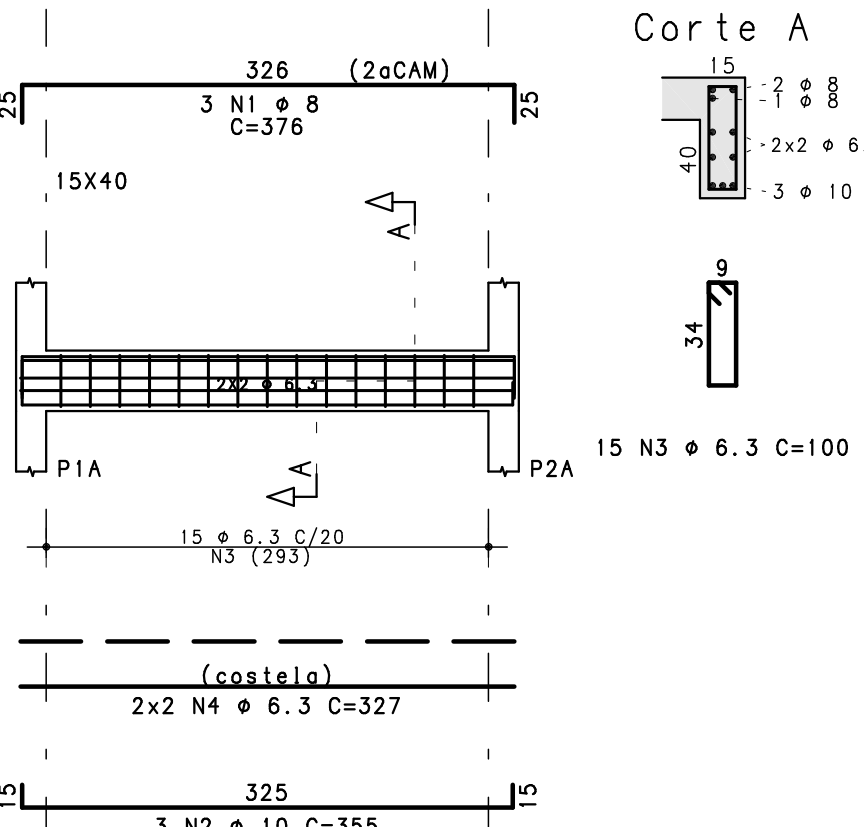


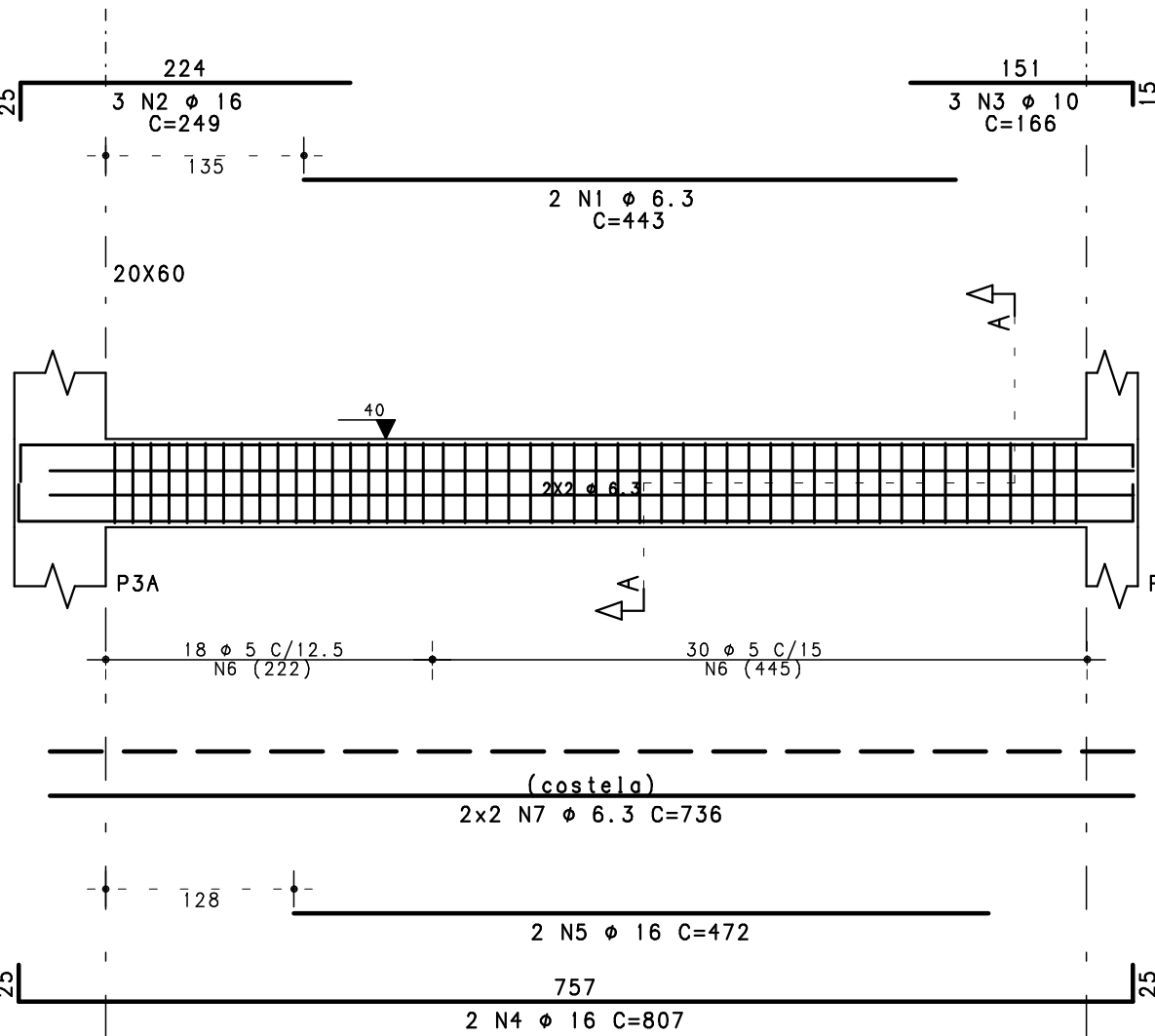
VA201



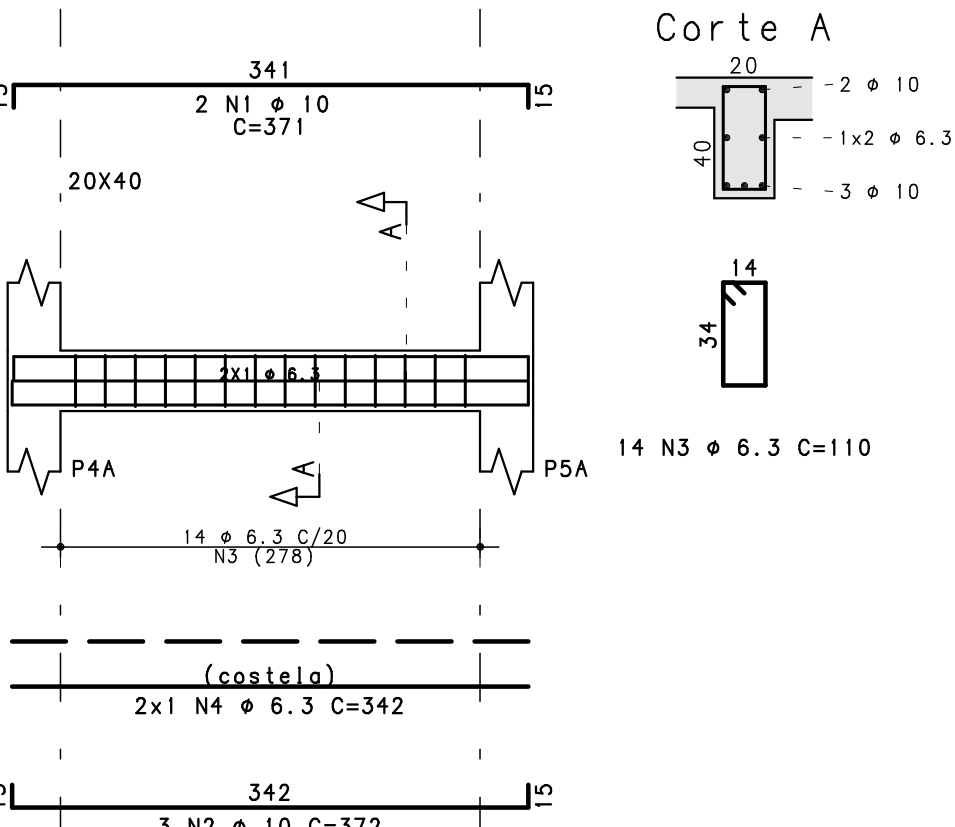
VA202



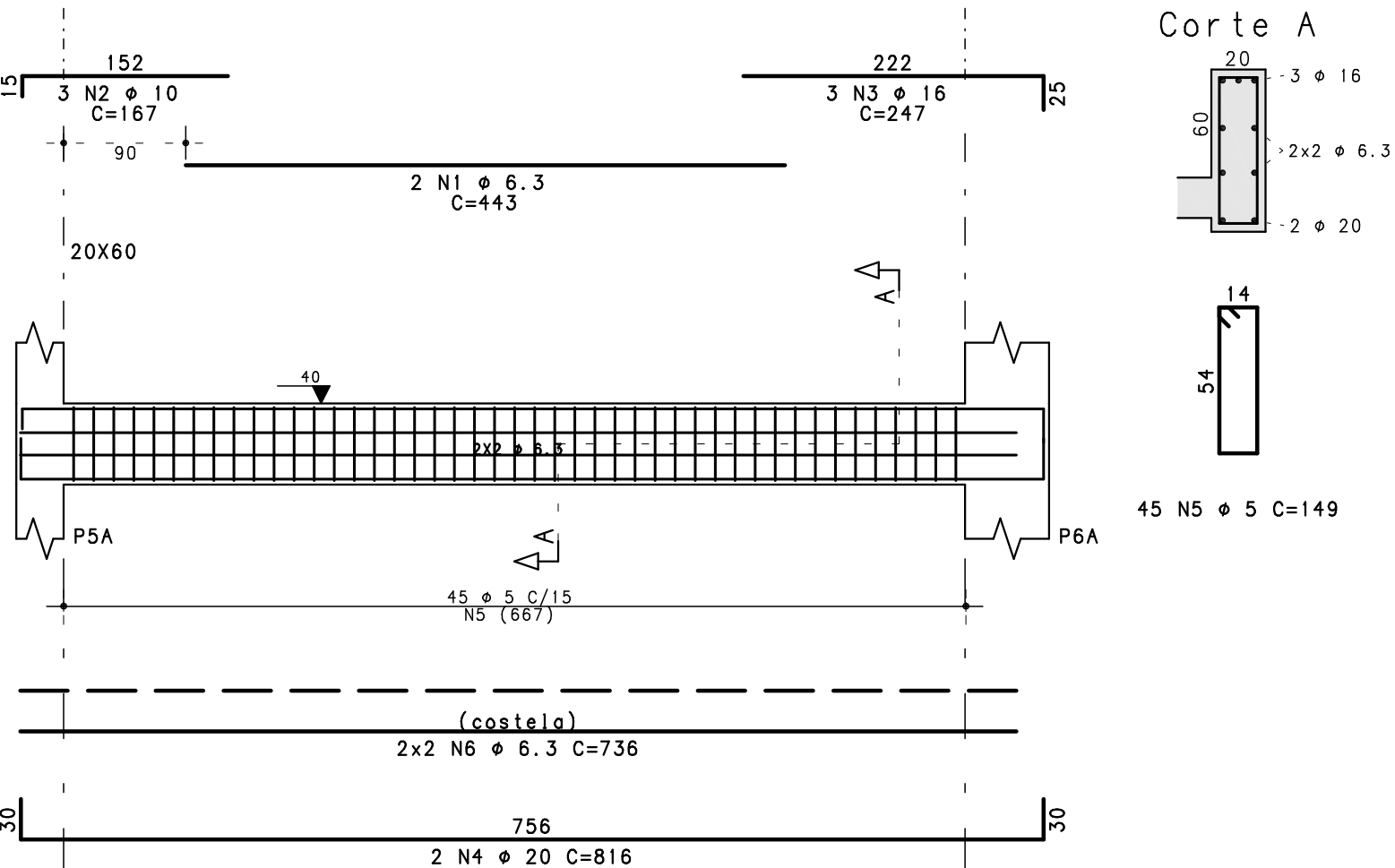
VA203



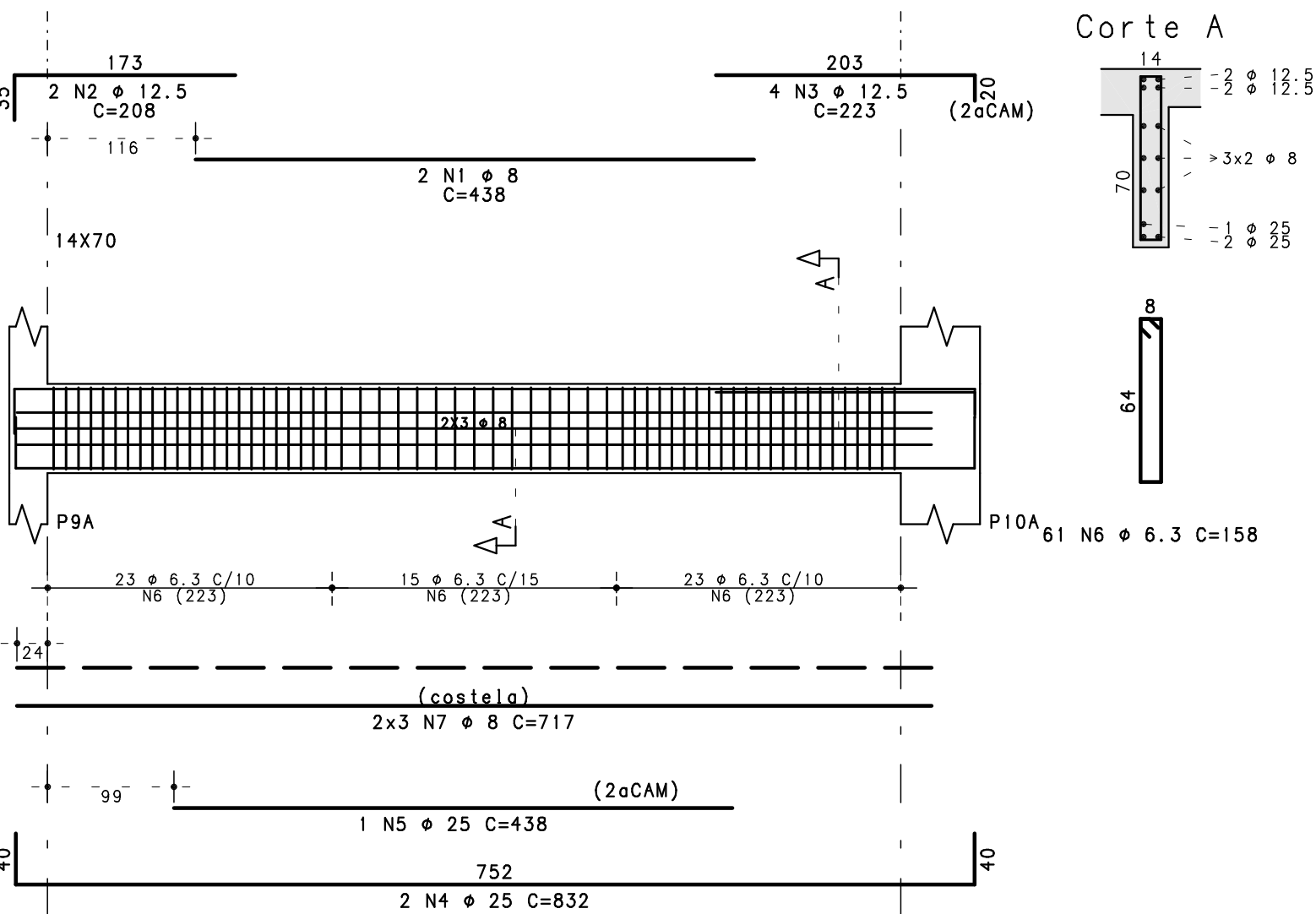
VA204



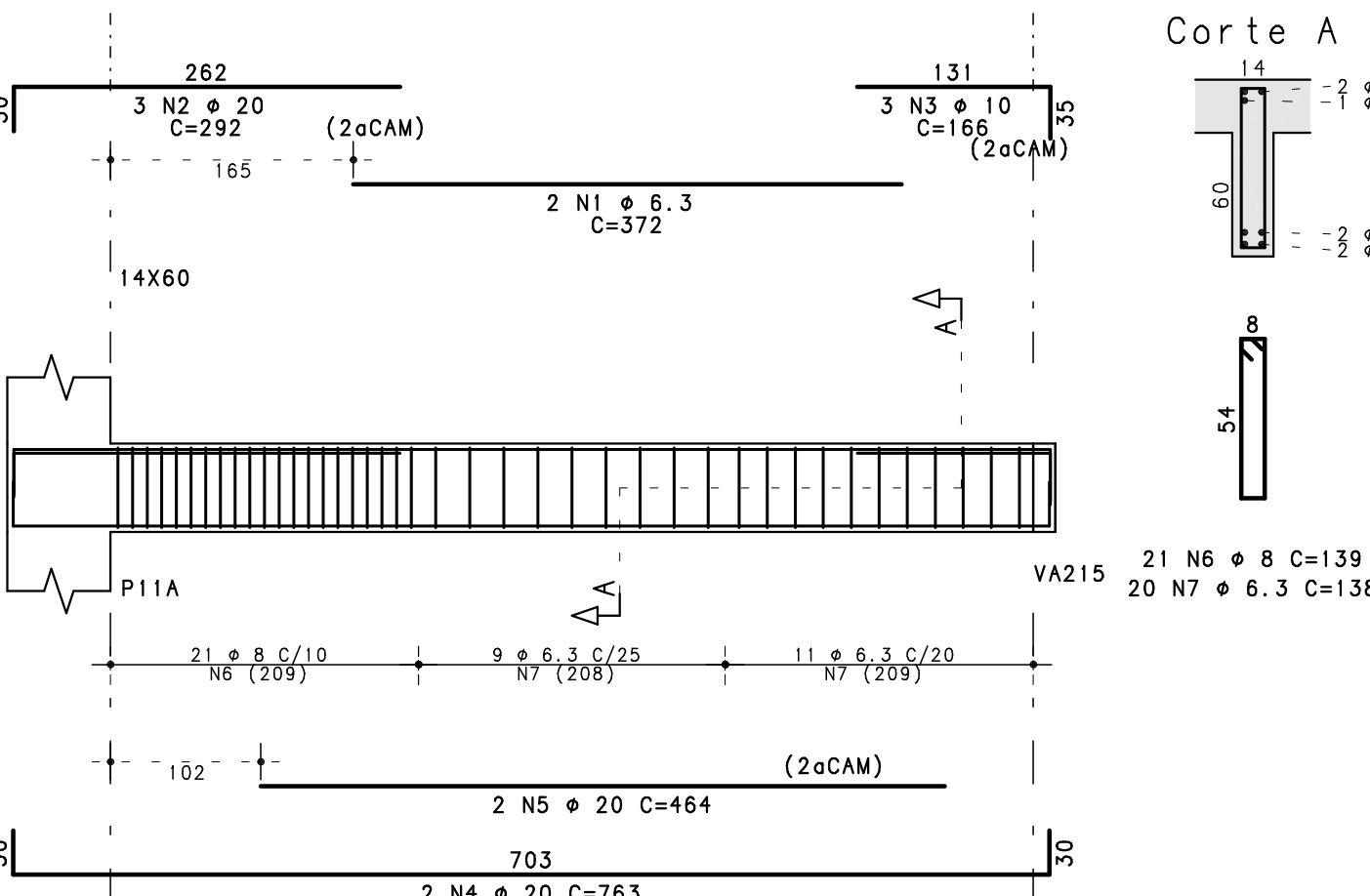
VA205



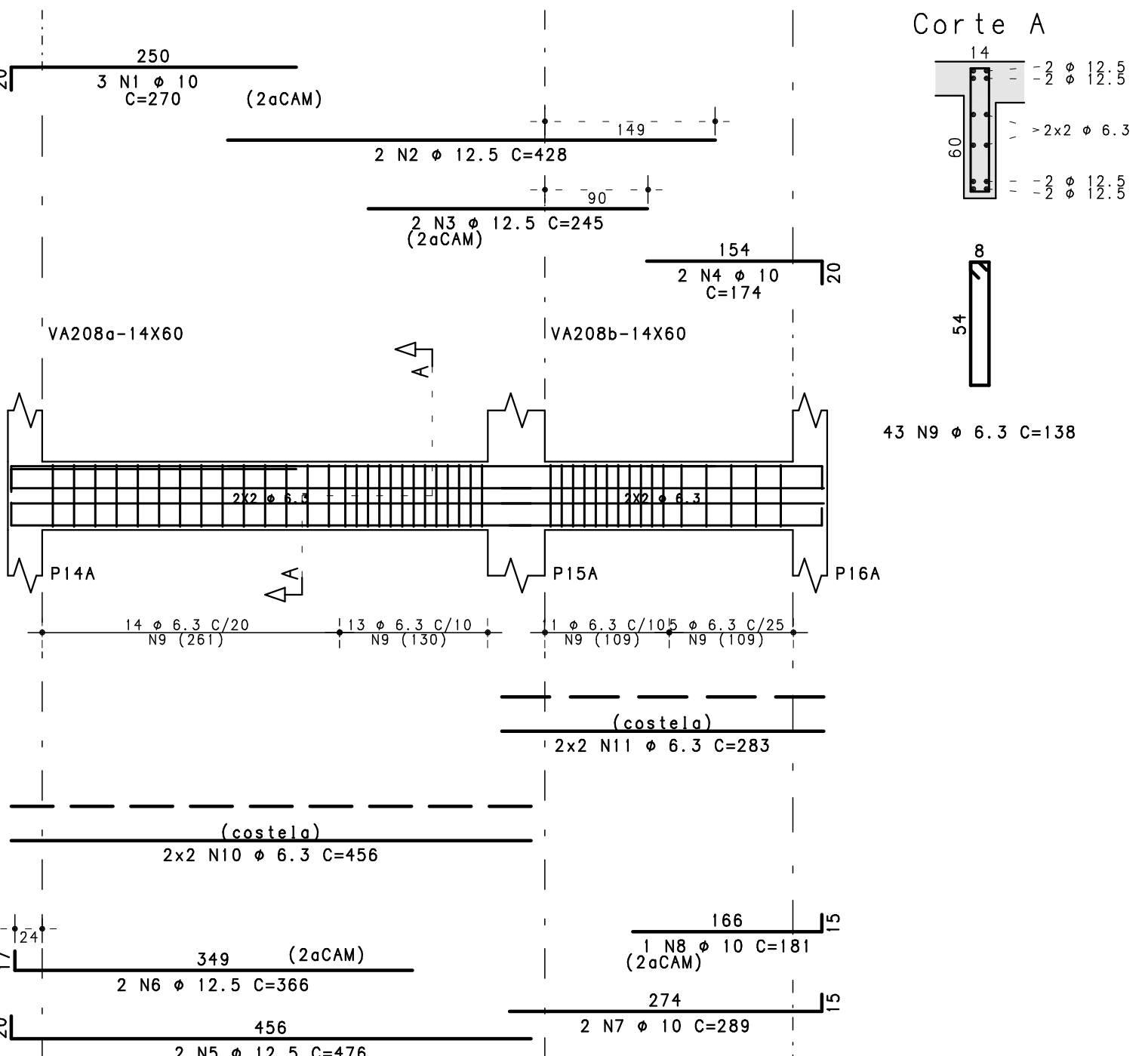
VA206



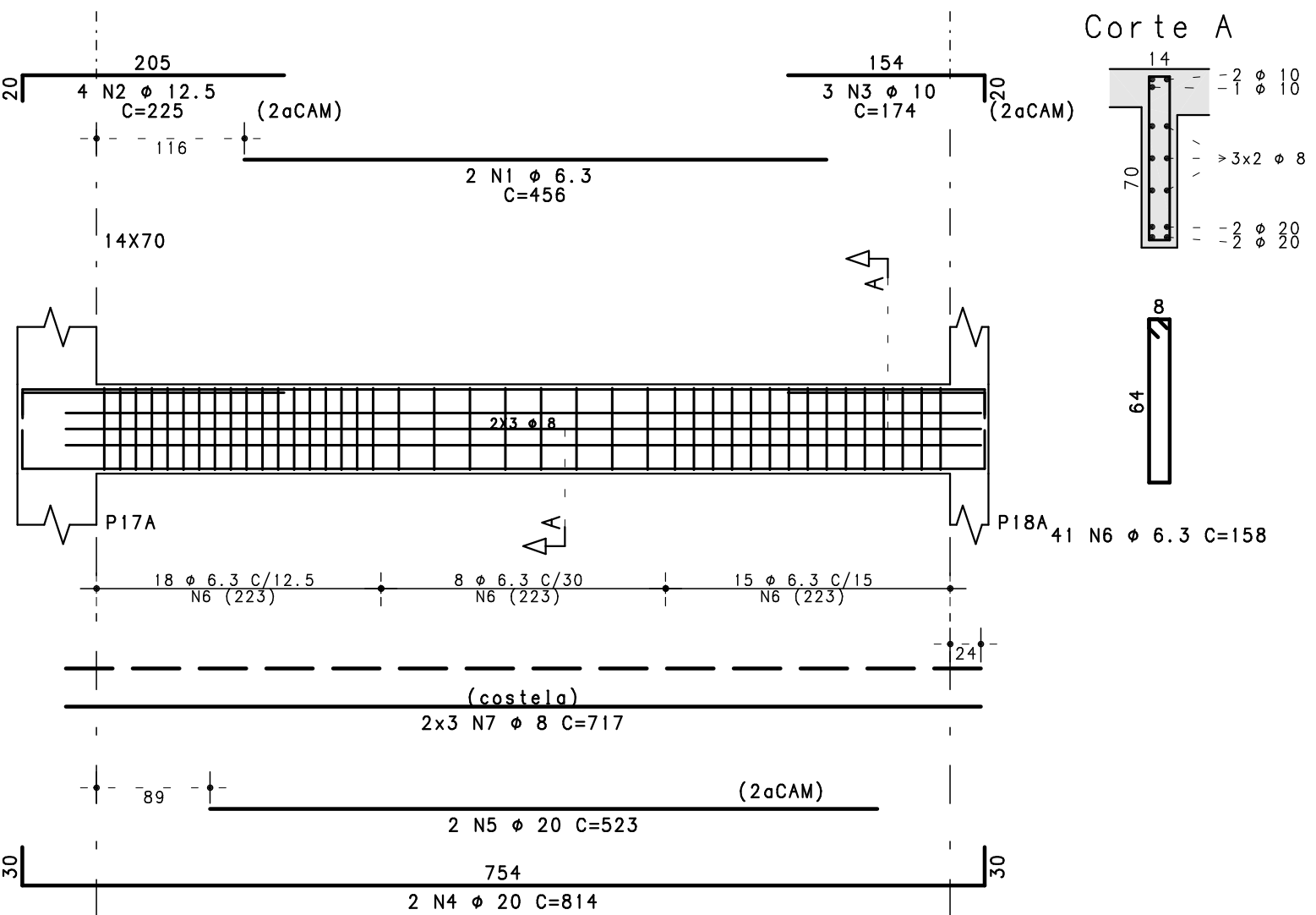
VA207



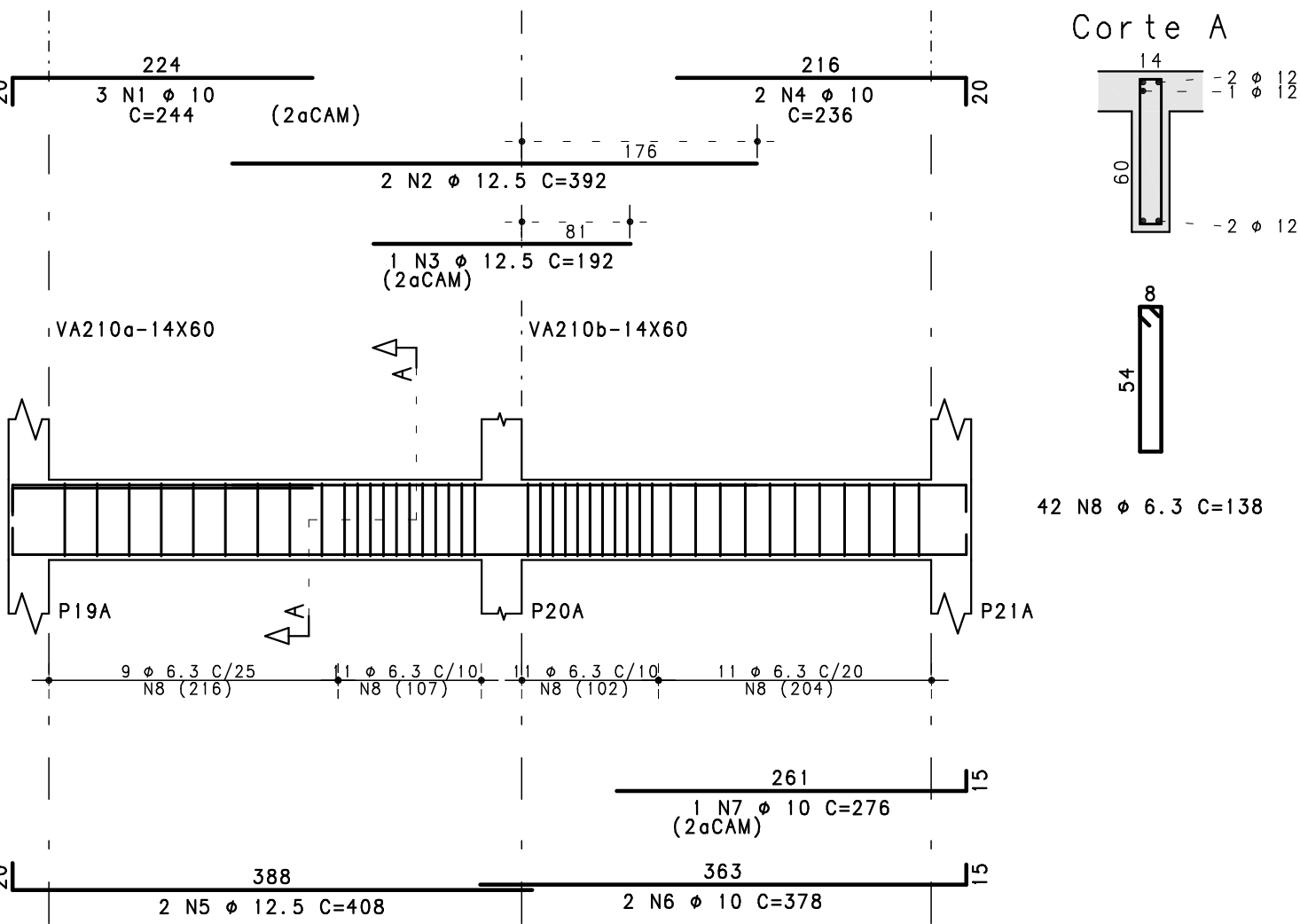
VA208



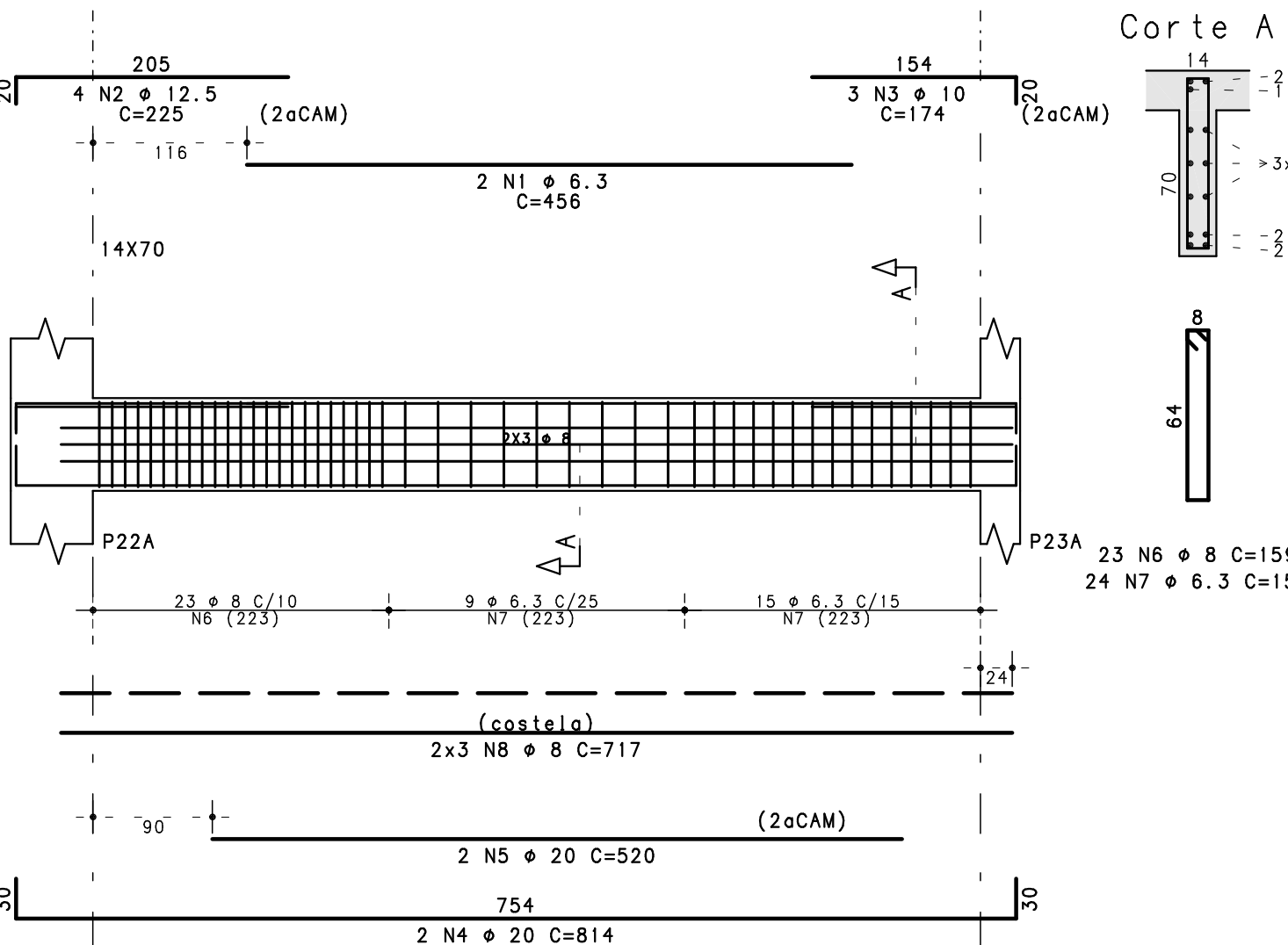
VA209



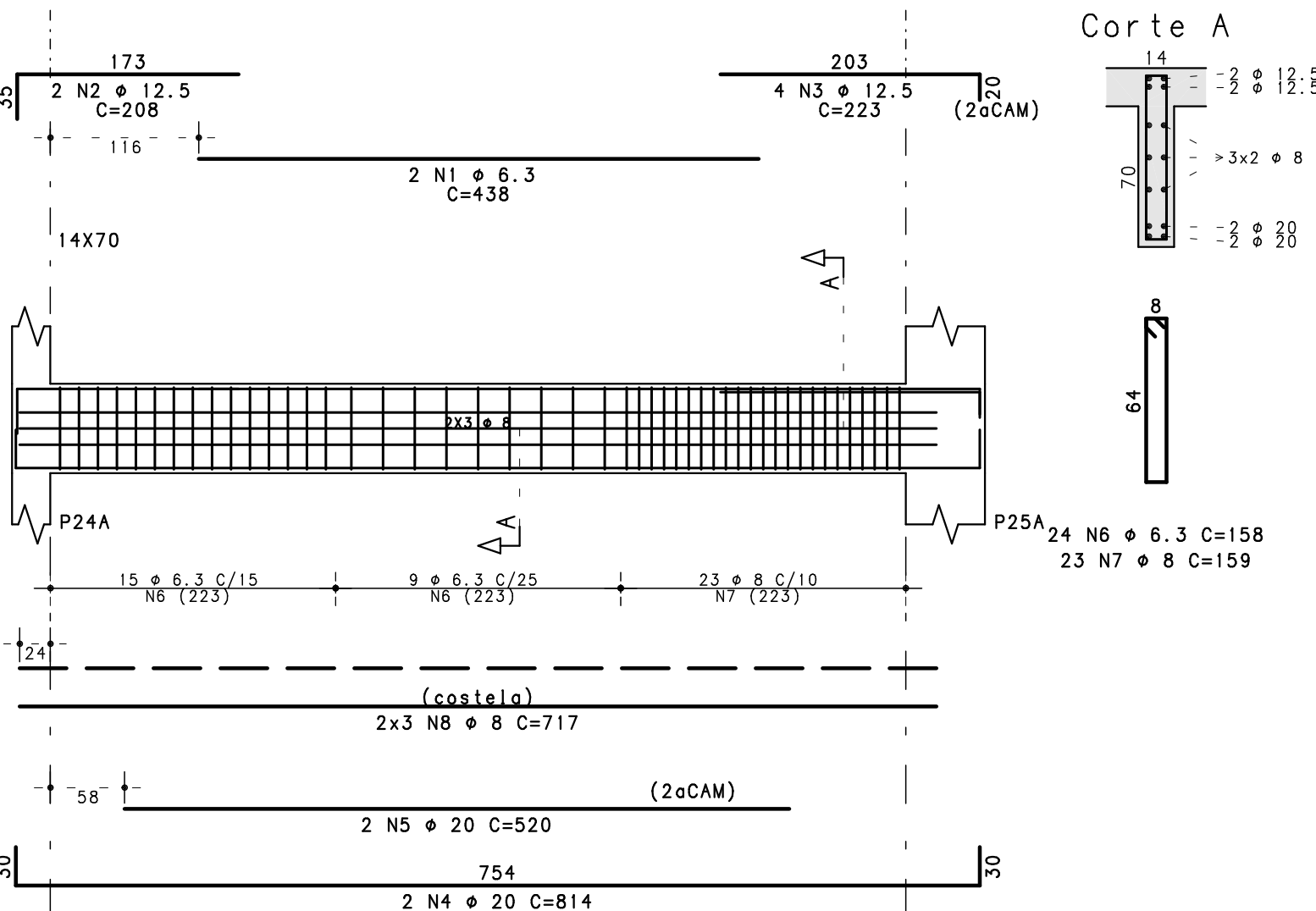
VA210



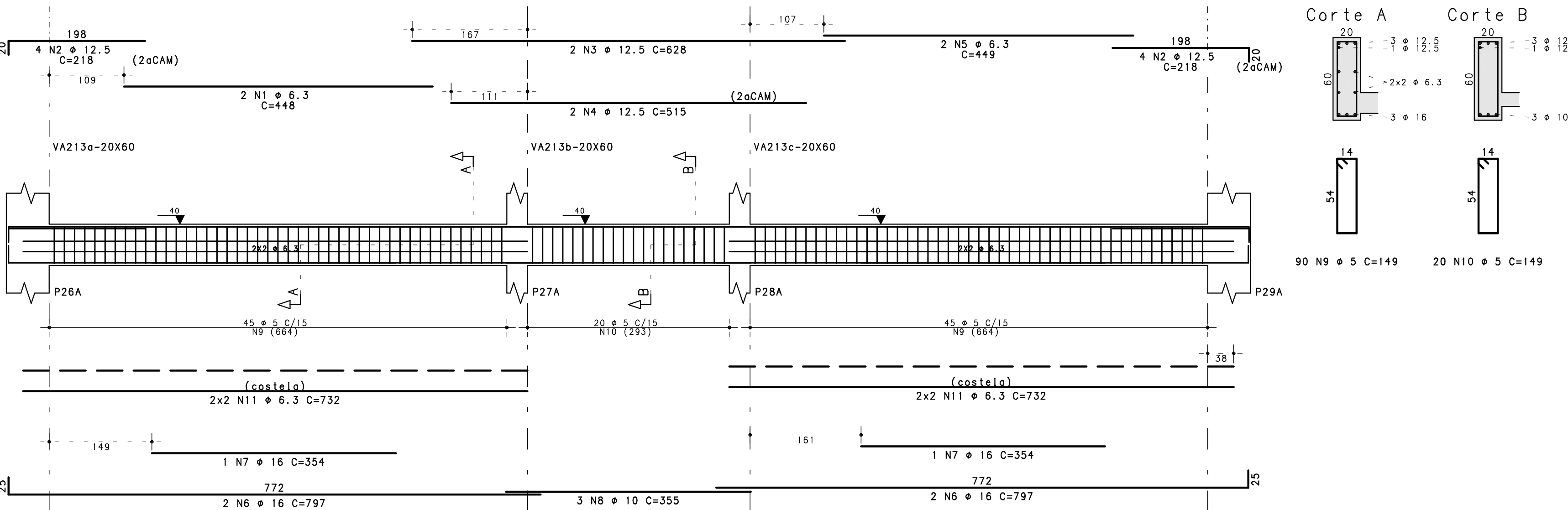
VA211



VA212



VA213



ACO	POS	BIT	QUANT	COMPRIMENTO	UNIT	TOTAL
(mm)		(mm)		(cm)		(cm)
VA201	50A	1	10	3	386	1158
	50A	2	10	3	355	1065
	60B	3	5	20	149	2980
VA202	50A	1	8	3	376	1128
	50A	2	10	3	355	1065
	50A	3	6.3	16	100	1500
	50A	4	6.3	4	327	1308
VA203	50A	1	6.3	2	443	886
	50A	2	16	3	219	497
	50A	3	10	3	166	498
	50A	4	16	2	807	1614
	50A	5	16	2	172	344
	60B	6	5	48	149	7152
	50A	7	6.3	4	236	2944
VA204	50A	1	10	3	371	1116
	50A	2	10	3	372	1116
	50A	3	6.3	14	110	1540
	50A	4	6.3	2	242	684
VA205	50A	1	6.3	2	443	886
	50A	2	10	3	167	501
	50A	3	16	2	247	741
	50A	4	20	2	816	1632
	60B	5	5	45	149	6705
	50A	6	6.3	4	236	2944
VA206	50A	1	8	2	438	876
	50A	2	12.5	2	208	416
	50A	3	12.5	4	223	892
	50A	4	25	2	832	1664
	50A	5	25	1	438	438
	50A	6	6.3	61	158	9638
	50A	7	8	6	717	4302
VA207	50A	1	6.3	2	372	744
	50A	2	20	3	292	876
	50A	3	10	3	166	498
	50A	4	20	2	763	1526
	50A	5	20	2	464	928
	50A	6	8	21	139	2919
	50A	7	6.3	20	138	2760
VA208	50A	1	6.3	2	438	876
	50A	2	12.5	2	208	416
	50A	3	10	3	166	498
	50A	4	20	2	763	1526
	50A	5	20	2	464	928
	50A	6	8	21	139	2919
	50A	7	6.3	20	138	2760
VA209	50A	1	6.3	2	448	896
	50A	2	12.5	2	208	416
	50A	3	10	3	166	498
	50A	4	20	2	763	1526
	50A	5	20	2	464	928
	50A	6	8	21	139	2919
	50A	7	6.3	20	138	2760
VA210	50A	1	6.3	2	448	896
	50A	2	12.5	2	208	416
	50A	3	10	3	166	498
	50A	4	20	2	763	1526
	50A	5	20	2	464	928
	50A	6	8	21	139	2919
	50A	7	6.3	20	138	2760
VA211	50A	1	6.3	2	448	896
	50A	2	12.5	2	208	416
	50A	3	10	3	166	498
	50A	4	20	2	763	1526
	50A	5	20	2	464	928
	50A	6	8	21	139	2919
	50A	7	6.3	20	138	2760
VA212	50A	1	6.3	2	448	896
	50A	2	12.5	2	208	416
	50A	3	10	3	166	498
	50A	4	20	2	763	1526
	50A	5	20	2	464	928
	50A	6	8	21	139	2919
	50A	7	6.3	20	138	2760
VA213	50A	1	6.3	2	448	896
	50A	2	12.5	2	208	416
	50A	3	10	3	166	498
	50A	4	20	2	763	1526
	50A	5	20	2	464	928
	50A	6	8	21	139	2919
	50A	7	6.3	20	138	2760

ACO	POS	BIT	QUANT	COMPRIMENTO	UNIT	TOTAL
(mm)		(mm)		(cm)		(cm)
VA201	50A	1	10	3	386	1158
	50A	2	10	3	355	1065
	60B	3	5	20	149	2980
VA202	50A	1	8	3	376	1128
	50A	2	10	3	355	1065
	50A	3	6.3	16	100	1500
	50A	4	6.3	4	327	1308
VA203	50A	1	6.3	2	443	886
	50A	2	16	3	219	497
	50A	3	10	3	166	498
	50A	4	16	2	807	1614
	50A	5	16	2	172	344
	60B	6	5	48	149	7152
	50A	7	6.3	4	236	2944
VA204	50A	1	10	3	371	1116
	50A	2	10	3	372	1116
	50A	3	6.3	14	110	1540
	50A	4	6.3	2	242	684
VA205	50A	1	6.3	2	443	886
	50A	2	10	3	167	501
	50A	3	16	2	247	741
	50A	4	20	2	816	1632
	60B	5	5	45	149	6705
	50A	6	6.3	4	236	2944
VA206	50A	1	8	2	438	876
	50A	2	12.5	2	208	416
	50A	3	12.5	4	223	892
	50A	4	25	2	832	1664
	50A	5	25	1	438	438
	50A	6	6.3	61	158	9638
	50A	7	8	6	717	4302
VA207	50A	1	6.3	2	372	744
	50A	2	20	3	292	876
	50A	3	10	3	166	498
	50A	4	20	2	763	1526
	50A	5	20	2	464	928
	50A	6	8	21	139	2919
	50A	7	6.3	20	138	2760
VA208	50A	1	6.3	2	438	876
	50A	2	12.5	2	208	416
	50A	3	10	3	166	498
	50A	4	20	2	763	1526
	50A	5	20	2	464	928
	50A	6	8	21	139	2919
	50A	7	6.3	20	138	2760
VA209	50A	1	6.3	2	448	896
	50A	2	12.5	2	208	416
	50A	3	10	3	166	498
	50A	4	20	2	763	1526
	50A	5	20	2	464	928
	50A	6	8	21	139	2919
	50A	7	6.3	20	138	2760
VA210	50A	1	6.3	2	448	896
	50A	2	12.5	2	208	416
	50A	3	10	3	166	498
	50A	4	20	2	763	1526
	50A	5	20	2	464	928
	50A	6	8	21	139	2919
	50A	7	6.3	20	138	2760
VA211	50A	1	6.3	2	448	896
	50A	2	12.5	2	208	416
	50A	3	10	3	166	498
	50A	4	20	2	763	1526
	50A	5	20	2	464	928
	50A	6	8	21	139	2919
	50A	7	6.3	20	138	2760
VA212	50A	1	6.3	2	448	896
	50A	2	12.5	2	208	416
	50A	3	10	3	166	498
	50A	4	20	2	763	1526
	50A	5	20	2	464	928
	50A	6	8	21	139	2919
	50A	7	6.3	20	138	2760
VA213	50A	1	6.3	2	448	896
	50A	2	12.5	2	208	416
	50A	3	10	3	166	498
	50A	4	20	2	763	1526
	50A	5	20	2	464	928
	50A	6	8	21	139	2919
	50A	7	6.3	20	138	2760

CONCRETO : FCK = 30 MPa

10		
08		
06		
04		
02		
01		
00	EMISSÃO INICIAL	11/07/2018 PLB4
REV.	MODIFICAÇÃO	DATA: RESP.